

**SELECTED INDUSTRIAL PARKS  
OF PREŠOV REGION**

**PREŠOV**  
SELF-GOVERNING **REGION**  
*of opportunities*

**2022**

The brochure provides investors with basic overview on possibilities of use of industrial parks situated in Prešov Region. The brochure comprises industrial parks from **SARIO** database (Slovak Investment and Trade Development Agency).

Each industrial park is compendiously presented on its own card, with information about its location, area, type, time accessibility, and a park's connections to networks.

It also contains general statistics on the region and its districts, and selected indicators of population, workforce, salaries, and educational level, which lay out a complex perspective of the whole territory. The data are current as of the end of 2021.

## DEFINITION OF BASIC TERMS

### INDUSTRIAL PARK

area defined by a zoning plan of a municipality or by a territorial plan of zones with an ongoing or planned industrial production or services of a single or numerous businesses.

### INDUSTRIAL ZONE AND SPECIAL ECONOMIC ZONE

area defined by a zoning plan of a municipality or by a territorial plan of zones. SEZ are defined geographical areas within economy, with business activity subject to different rules as those common in the rest of the economy.



#### GREEN PARK – GREENFIELD

industrial park situated in an undeveloped property ("in a green field"), with no previous use for industrial purposes.



#### BROWN PARK – BROWNFIELD

industrial park situated in a built-up area with history of use for industrial purposes. The park develops from financial investments in already existing buildings and properties which are currently unused or abandoned.



#### POTENTIAL PARK

an area to be equipped with basic technical infrastructure (water, natural gas, electricity, transportation, telecommunications, sewage, etc.), to undergo a proper land settlement and to be rid of previous burdens, so that it can be used for industrial purposes in the future.

## BASIC INFORMATION ABOUT THE REGION



Area: **8,972 km<sup>2</sup>**



Population: **808,931**

Population density: **90 per./km<sup>2</sup>**

Average age: **39.1 years**



Economically active population: **398,900**

Unemployment rate: **10.75%**

Average gross monthly salary: **€1,157**



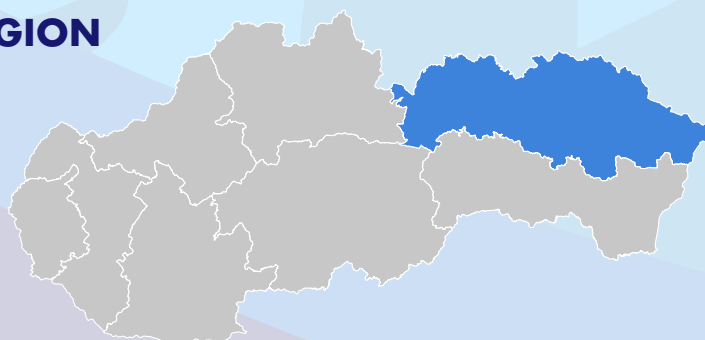
Number of municipalities: **665**



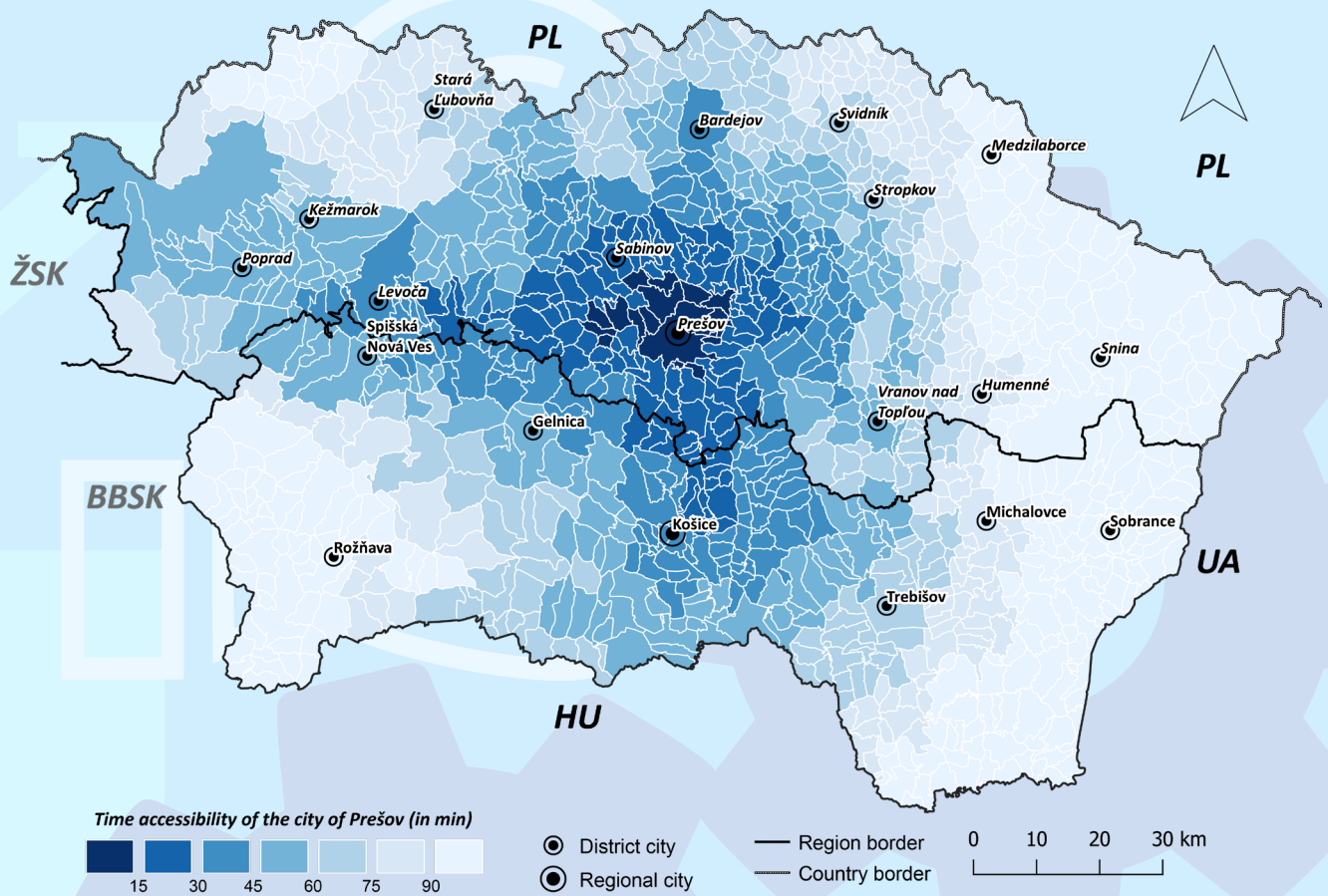
Of which cities: **23**



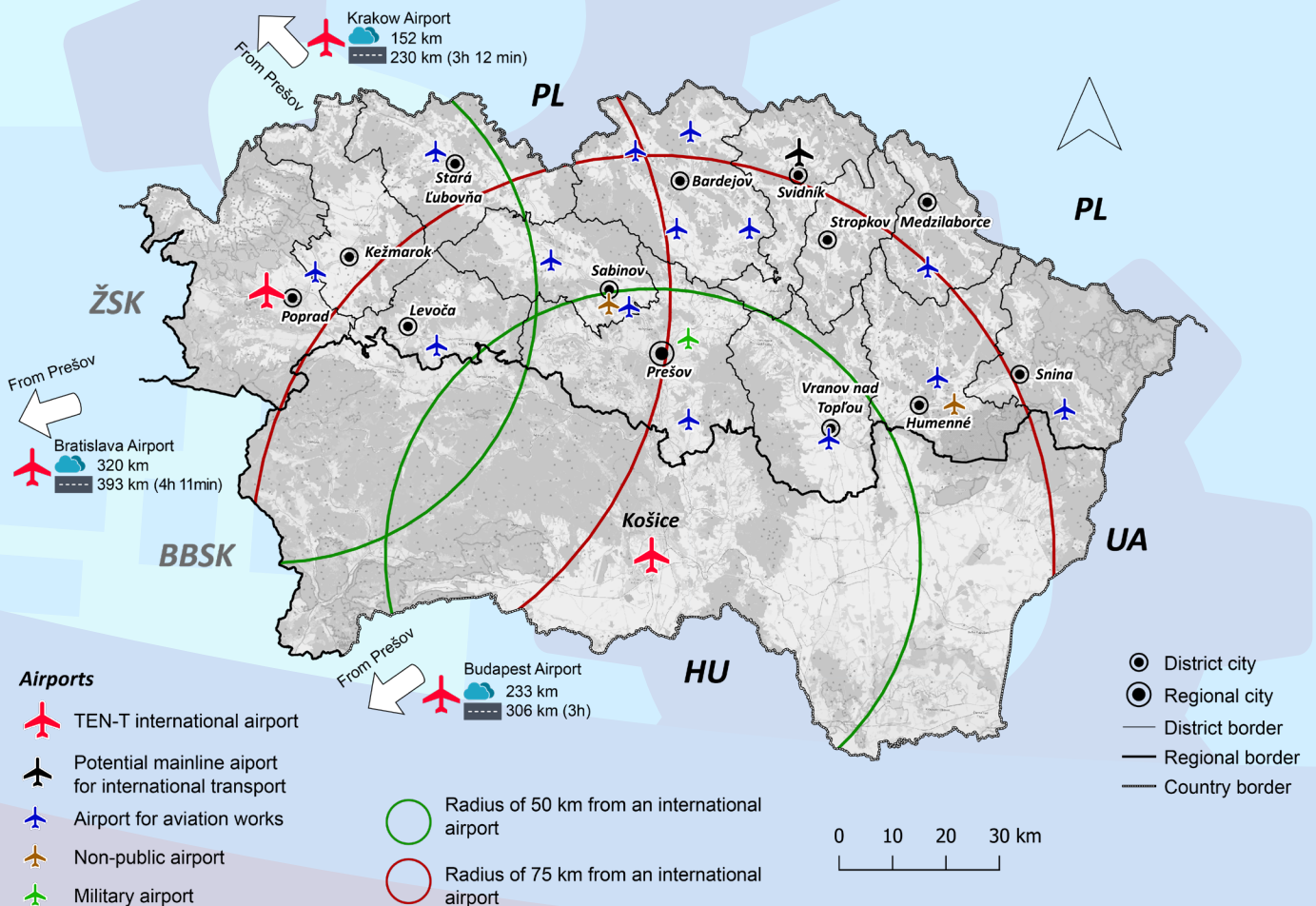
Number of districts: **13**



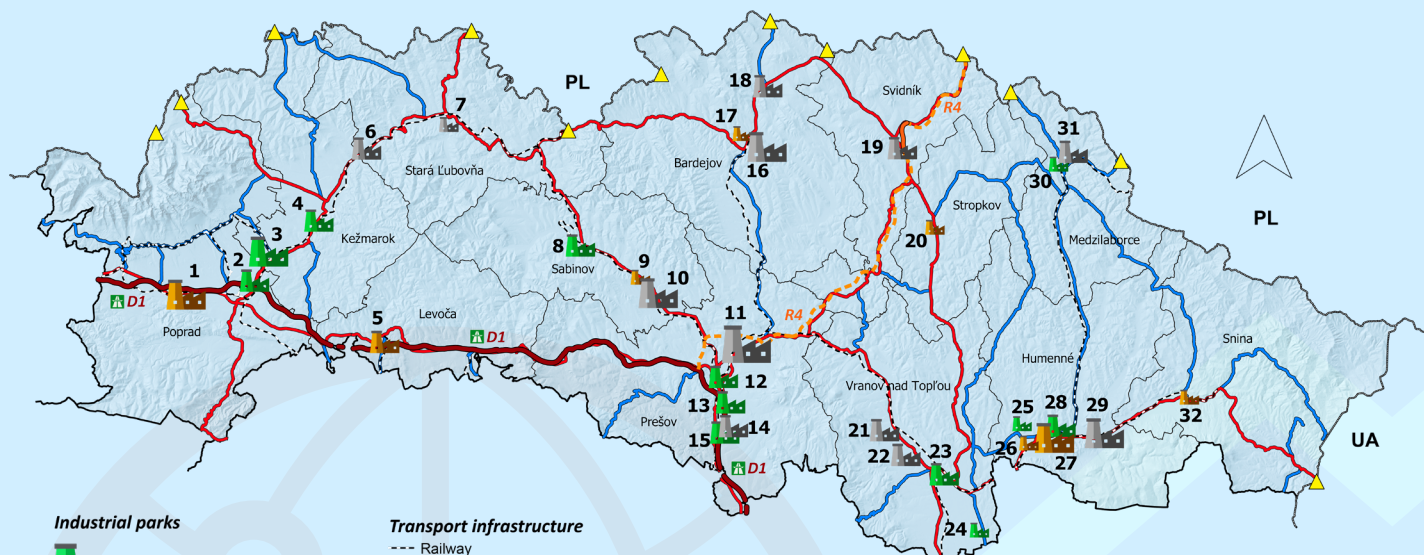
# TIME ACCESSIBILITY TO THE REGIONAL CITY OF PREŠOV



## AIR TRANSPORT



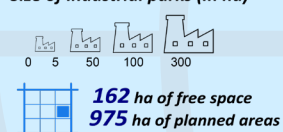
# SELECTED INDUSTRIAL PARKS OF PREŠOV REGION



## Industrial parks

-  12 "greenfields"
-  8 "brownfields"
-  12 potential parks

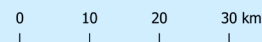
## Size of industrial parks (in ha)



## Transport infrastructure

- Railway
- Motorway
- Expressway
- 1-st class road
- 2-nd class road
- Planned R4 road

- ▲ border crossing
- border of the district
- border of the region
- border of the state



### Greenfields

No.	Name	Size (ha)	Free space (ha)
2	Poprad - Matejovce	9.09	0
3	Veľká Lomnica	57	57
4	Kežmarok - Pradiareň	17.6	0
8	Lipany	10.13	0
12	Prešov-Grófske	45	45
13	Prešov - Záborské	24.63	5.69
15	Petrovany	8.53	2.5
23	Vranov nad Topľou - Ferovo	12.77	10.13
24	Nižný Hrušov	2.4	2.4
25	Myslina	2.71	0
28	Humenné - Guttmanovo	5.4	0.49
30	Medzilaborce	4.69	2

### Brownfields

No.	Name	Size (ha)	Free space (ha)
1	Svit	58	5
5	Levoča	6.5	2.73
9	Sabinov	2	0.16
17	Bardejov	1.18	0.15
20	Stropkov	2.11	0.73
26	Humenné	2	2
27	Humenné	64	7
32	Snina	0.47	0

### Potential parks

No.	Name	Size (ha)
6	Podolínec	15
7	Stará Ľubovňa	2.5
10	Sabinov	90
11	Prešov	300
14	Záborské	30
16	Bardejov	70
18	Zborov	21.8
19	Svidník - Juh (Petrova dolina)	19.4
21	Soľ	10.1
22	Čaklov	13.8
29	Kamenica nad Cirochou	75
31	Medzilaborce	21

## SUMMARY OVERVIEW OF INDUSTRIAL PARKS IN THE DISTRICT OF PREŠOV REGION

District	Number of parks	Greenfields	Brownfields	Potential parks	Total area (ha)	Area available (ha)
Bardejov	3	0	1	2	92.98	0.15
Humenné	5	2	2	1	149.11	9.49
Kežmarok	2	2	0	0	74.6	57
Levoča	1	0	1	0	6.5	2.73
Medzilaborce	2	1	0	1	25.69	2
Poprad	2	1	1	0	67.09	5
Prešov	5	3	0	2	408.16	53.19
Sabinov	3	1	1	1	102.13	0.16
Snina	1	0	1	0	0.47	0
Stará Ľubovňa	2	0	0	2	17.5	
Stropkov	1	0	1	0	2.11	0.73
Svidník	1	0	0	1	19.4	19.4
Vranov nad Topľou	4	2	0	2	39.07	12.53
<b>Total</b>	<b>32</b>	<b>12</b>	<b>8</b>	<b>12</b>	<b>1,004.81</b>	<b>162.38</b>

# BARDEJOV



District area  
**935.95 km<sup>2</sup>**

Population of the district  
**75,786**



EAP in the district  
**39,386**

Unemployment rate  
**13.11%**

Average gross monthly salary  
**€895**



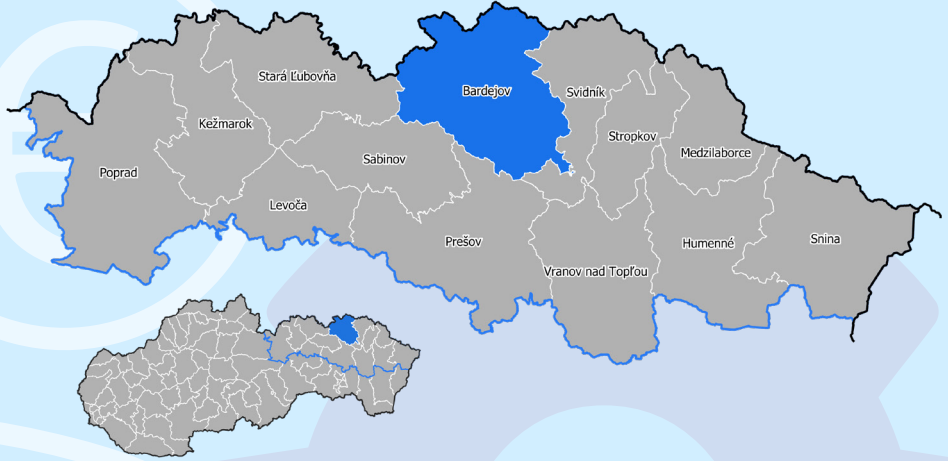
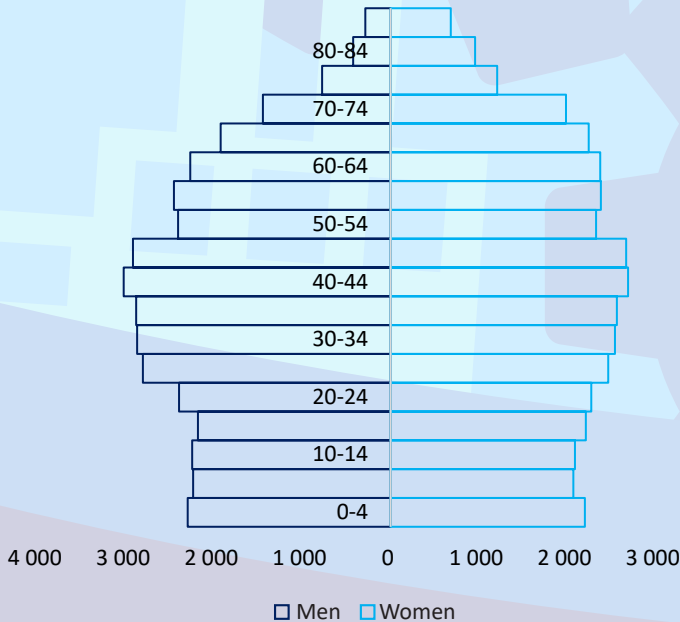
Schools of secondary education  
**9**

Students in secondary education  
**2,491**

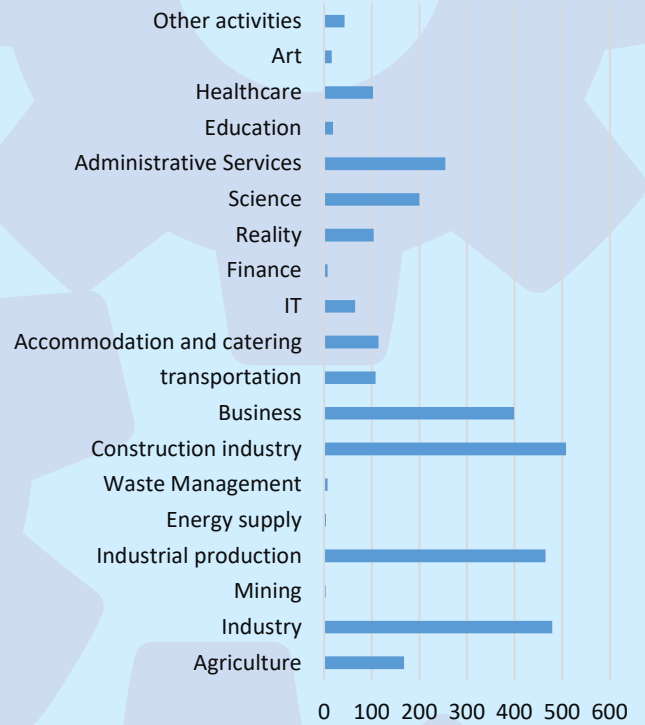
Students in dual education  
**109**



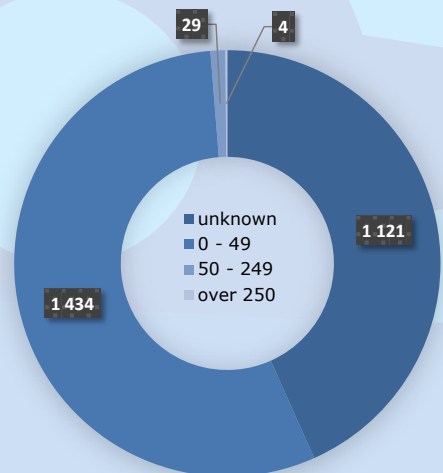
## AGE PYRAMID



## STRUCTURE OF ENTERPRISES BY ECONOMIC ACTIVITIES



## STRUCTURE OF ENTERPRISES BY NUMBER OF EMPLOYEES



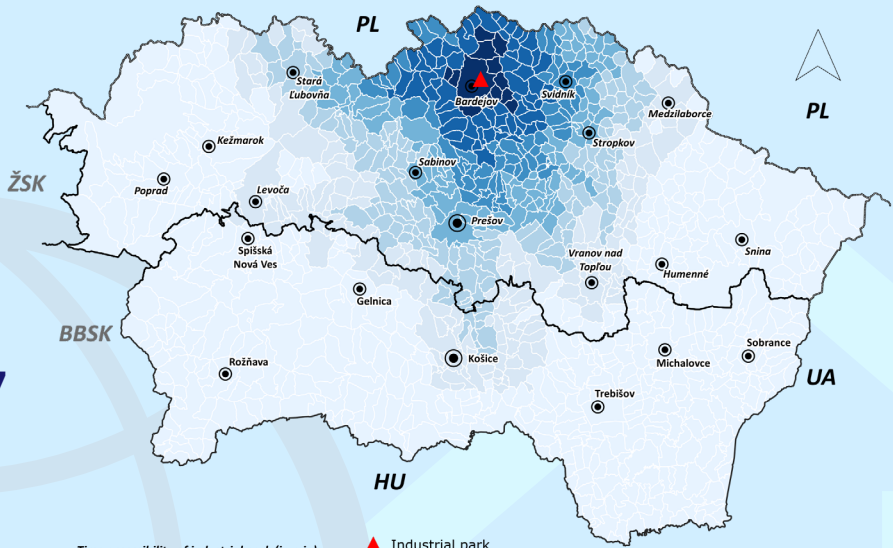
District

**BARDEJOV** 49°18'30.9"N 21°17'49.9"E



**TIME ACCESSIBILITY TO THE PARK**

Park type **BROWN**



Road access  
**directly to 1st class road I/77**

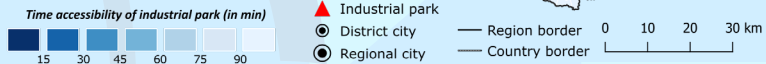
Highway access  
**44 km**



Railroad access  
**2.5 km**



Population living within 45-minute commuting distance  
**117,456**



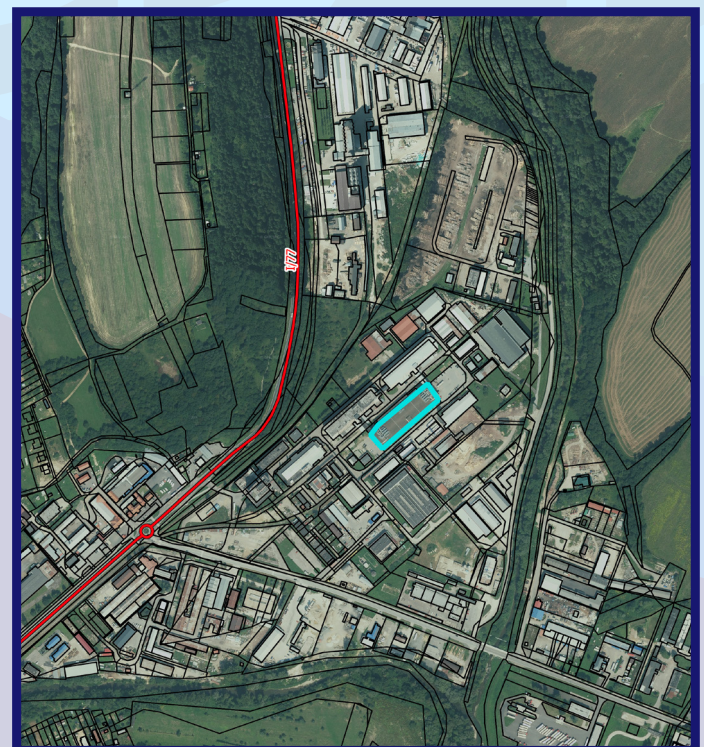
Connection to electrical network  
**6 MW**



Connection to water supply network  
**yes, DN 100**



Connection to sewer system  
**yes, DN 200**



Type of ownership  
**municipal**

All parcels owned by the City of Bardejov.



Area  
**1.18 ha**

Area available  
**0.15 ha**

Expansion capacity  
**no**

District

**BARDEJOV** 49°17'59.2"N 21°19'32.8"E



**TIME ACCESSIBILITY TO THE PARK**

Park type **POTENTIAL**



Road access  
**1 km to 1st class road I/77**

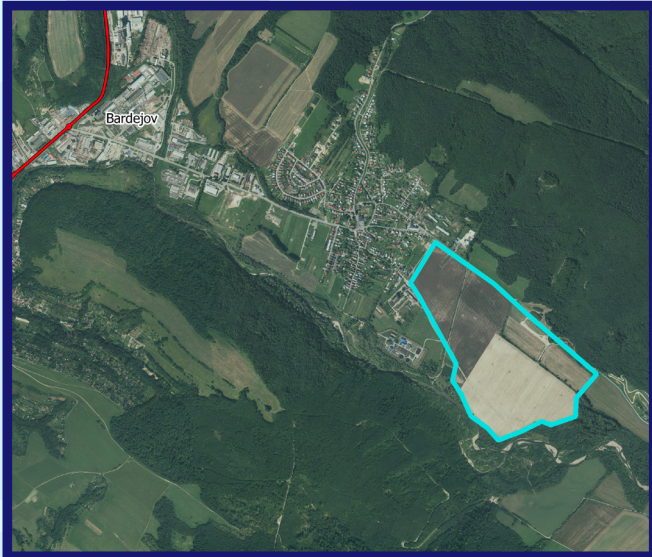
Highway access  
**50 km**



Railroad access  
**<1 km**



Population living within 45-minute commuting distance  
**117,456**



Type of ownership  
**mixed**

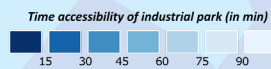
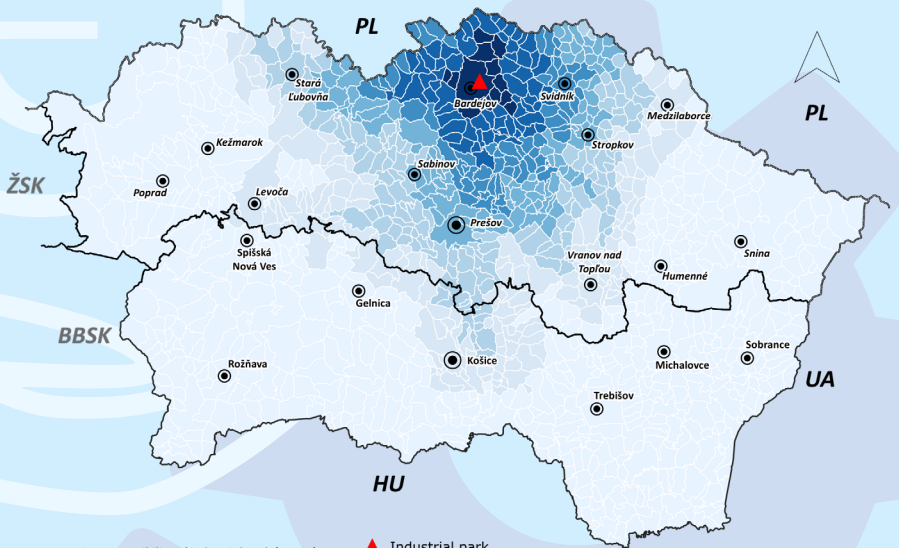
Land and properties owned by the city and a private company.



Area  
**70 ha**

Area available  
**70 ha**

Expansion capacity  
**no**



- ▲ Industrial park
  - District city
  - Regional city
  - Region border
  - Country border
- 0 10 20 30 km



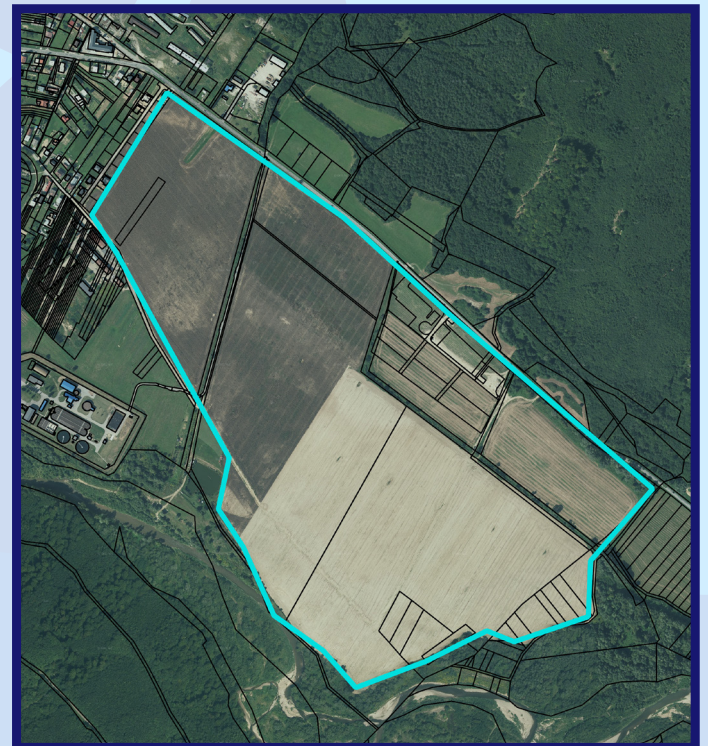
Connection to electrical network  
**planned**



Connection to water supply network  
**planned**



Connection to sewer system  
**planned**



District

**BARDEJOV** 49°22'17.3"N 21°17'22.9"E



**TIME ACCESSIBILITY TO THE PARK**

Park type **POTENTIAL**



Road access  
**500 m to Tier 1 road I/77**

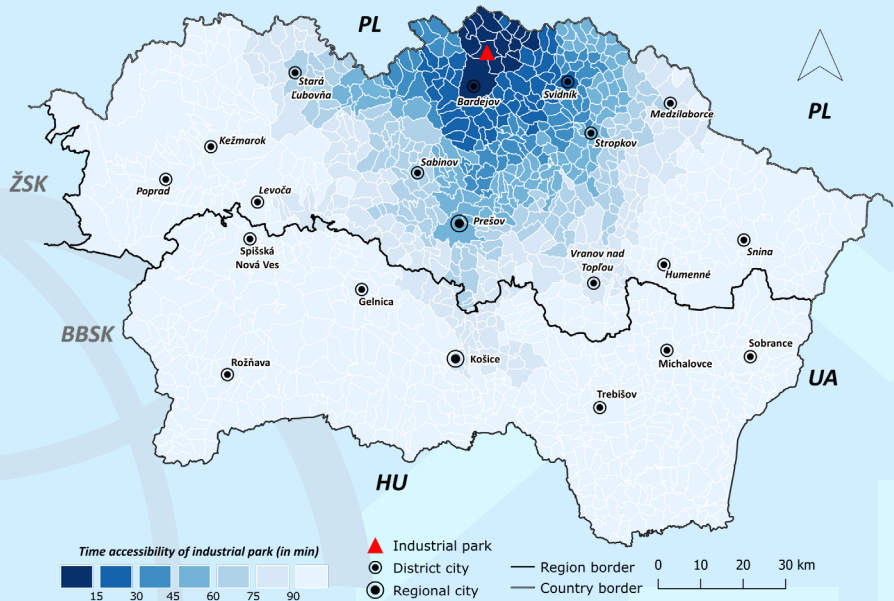
Highway access  
**55 km**



Railroad access  
**10 km**



Population living within 45-minute commuting distance  
**103,060**



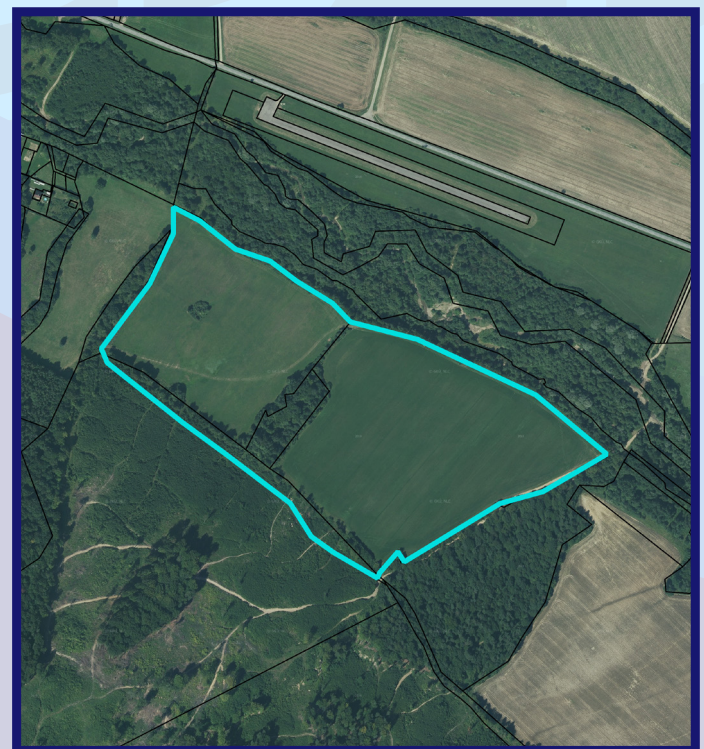
Connection to electrical network  
**planned**



Connection to water supply network  
**planned**



Connection to sewer system  
**planned**



Type of ownership  
**mixed**

Land and properties owned by the city and a private company.



Area  
**21.8 ha**

Area available  
**21.8 ha**

Expansion capacity  
**no**

# HUMENNÉ



District area  
**754.24 km<sup>2</sup>**

Population of the district  
**59,535**



EAP in the district  
**38,360**

Unemployment rate  
**8.3%**

Average gross monthly salary  
**€1,068**



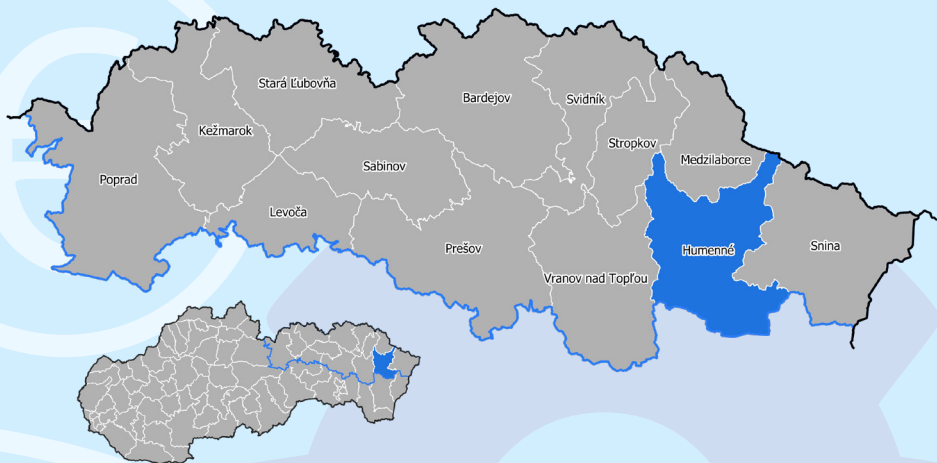
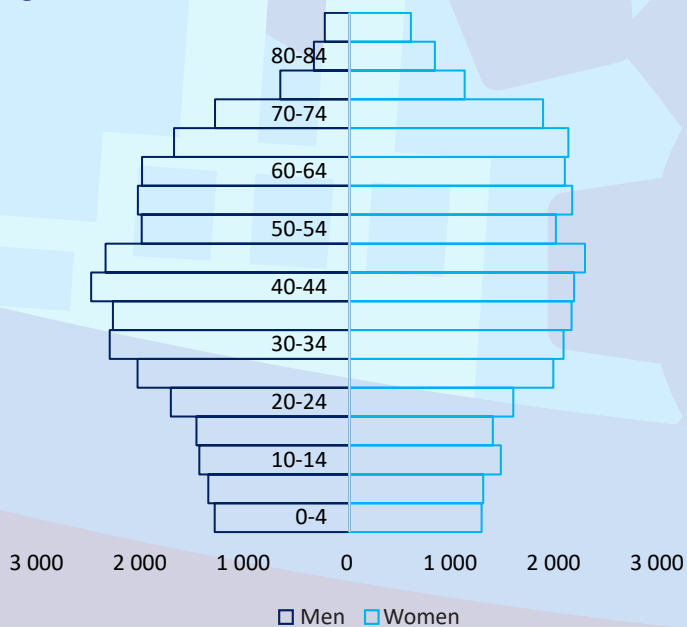
Schools of secondary education  
**11**

Students in secondary education  
**2,771**

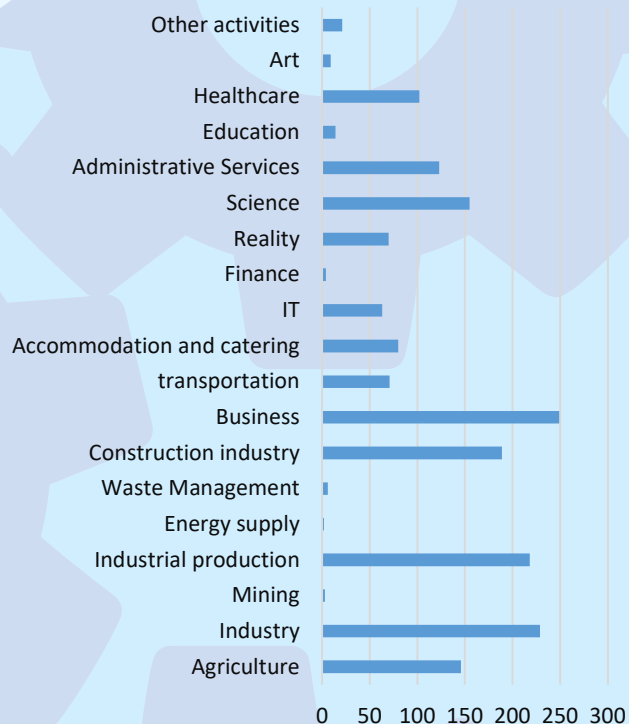
Students in dual education  
**36**



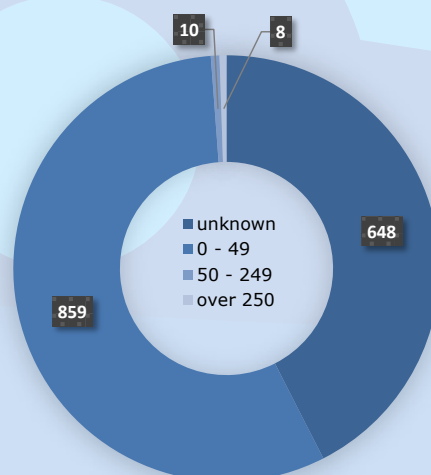
## AGE PYRAMID



## STRUCTURE OF ENTERPRISES BY ECONOMIC ACTIVITIES



## STRUCTURE OF ENTERPRISES BY NUMBER OF EMPLOYEES



District

**HUMENNÉ**

48°55'32.5"N 21°53'51.9"E



**TIME ACCESSIBILITY TO THE PARK**

Park type **BROWN**



Road access

**directly to 1st class road I/74**

Highway access

**70 km**



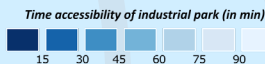
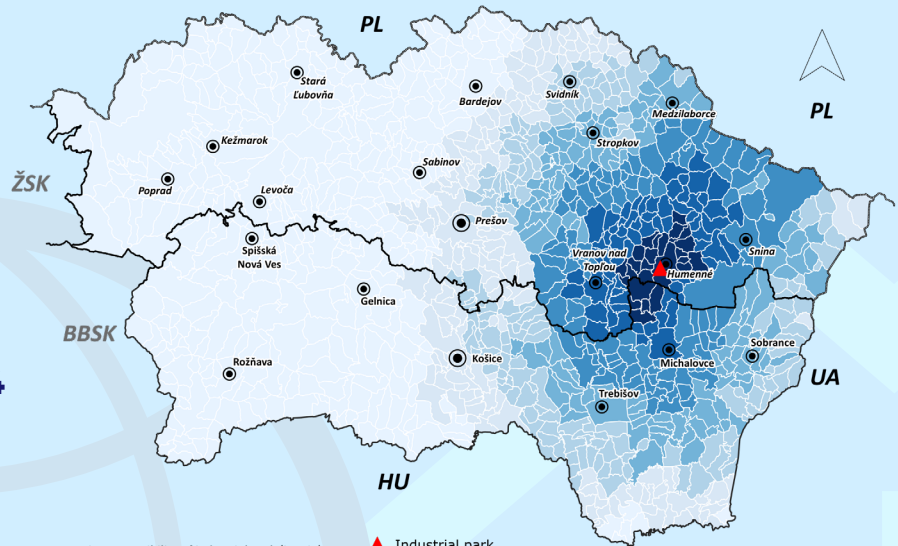
Railroad access

**<1 km**



Population living within 45-minute commuting distance

**254,590**



▲ Industrial park  
 ● District city  
 ● Regional city  
 — Region border  
 — Country border  
 0 10 20 30 km



Connection to electrical network

**70 MW**



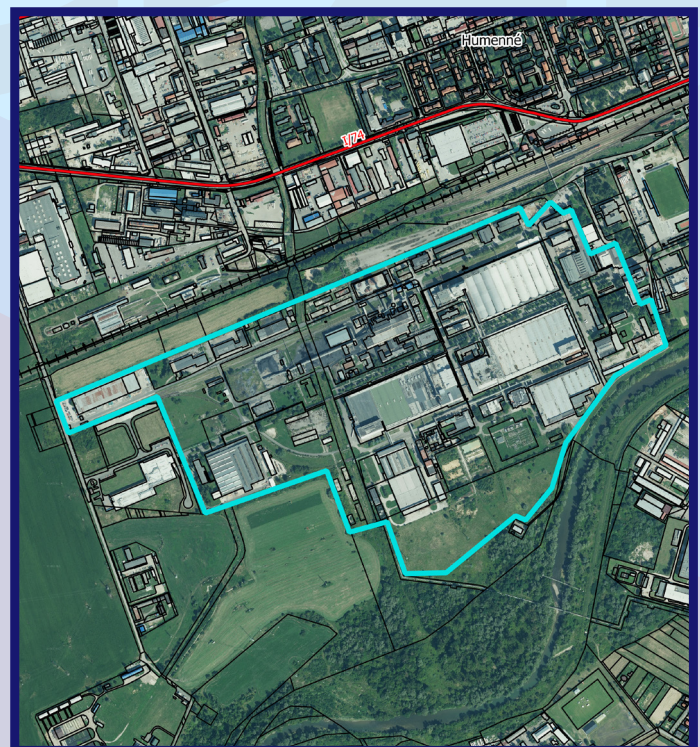
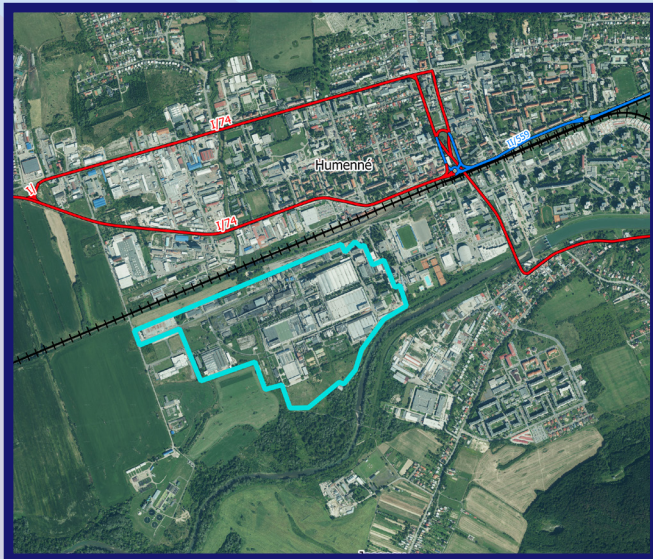
Connection to water supply network

**yes, DN 300**



Connection to sewer system

**yes, DN 300**



Type of ownership  
**private**

Parcels owned by natural persons and private companies.



Area  
**64 ha**

Area available  
**7 ha**

Expansion capacity  
**yes**

District

**HUMENNÉ**

48°55'23.8"N 21°53'12.6"E



**TIME ACCESSIBILITY TO THE PARK**

Park type **GREEN**



Road access  
**directly to 1st class road I/74**

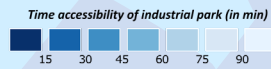
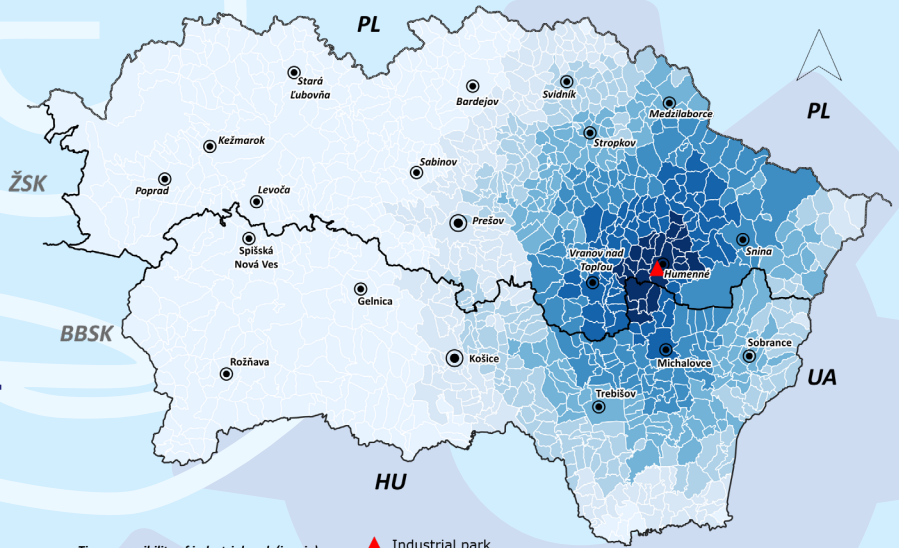
Highway access  
**70 km**



Railroad access  
**<1 km**



Population living within 45-minute  
commuting distance  
**254,590**



- ▲ Industrial park
  - District city
  - Regional city
  - Region border
  - Country border
- 0 10 20 30 km



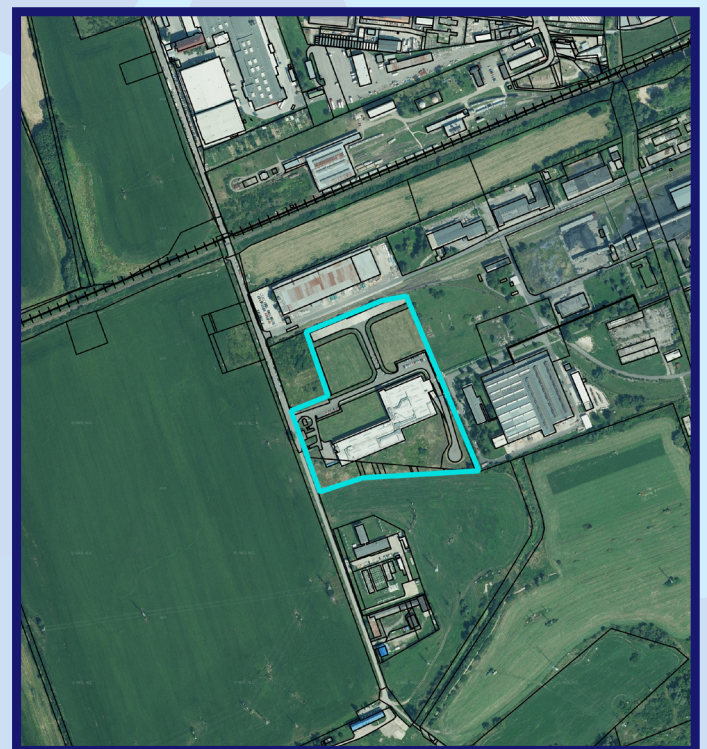
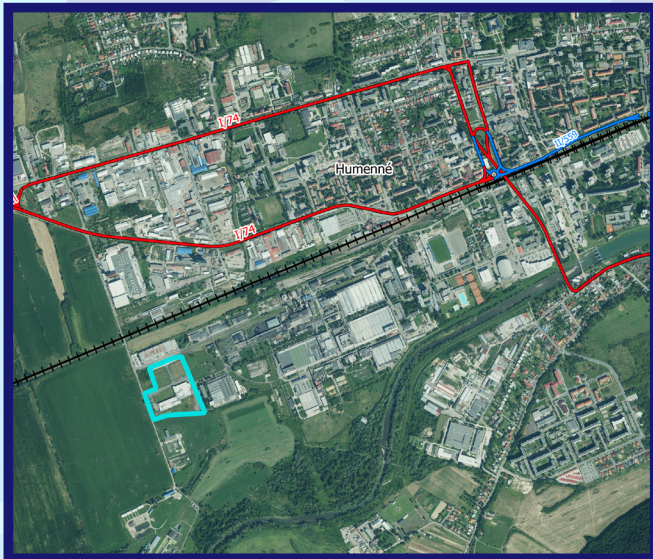
Connection to electrical  
network  
**0,6 MW**



Connection to  
water supply network  
**yes, DN 100**



Connection to sewer system  
**yes, DN 300**



Type of ownership  
**municipal**

Land and properties  
owned by the city.



Area  
**5.4 ha**

Area available  
**0.5 ha**

Expansion capacity  
**no**

District

**HUMENNÉ**

48°55'54.6"N 21°51'16.5"E



**TIME ACCESSIBILITY TO THE PARK**

Park type **GREEN**



Road access

**directly to 2nd class road no. 74**

Highway access

**58 km**



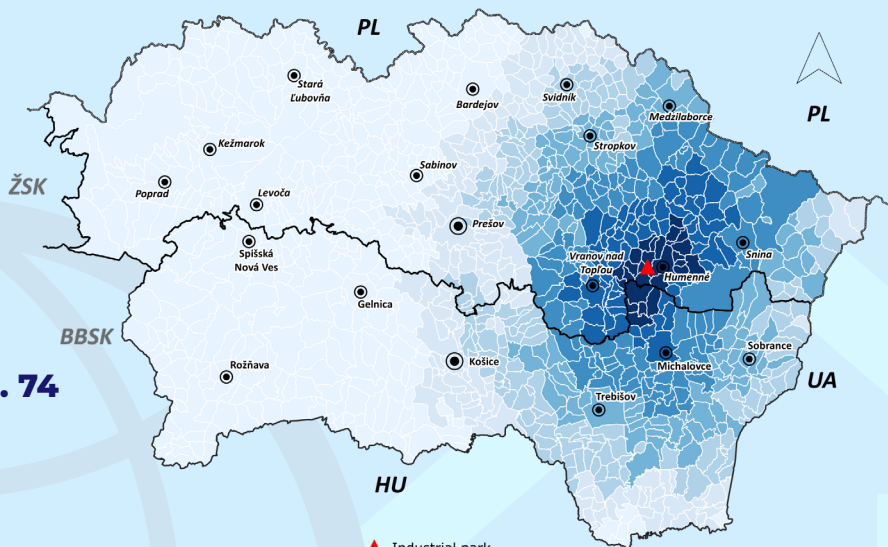
Railroad access

**4 km**



Population living within 45-minute commuting distance

**254,590**



Time accessibility of industrial park (in min)



▲ Industrial park

● District city

● Regional city

— Region border

— Country border

0 10 20 30 km



Connection to electrical network

**2.63 MW**



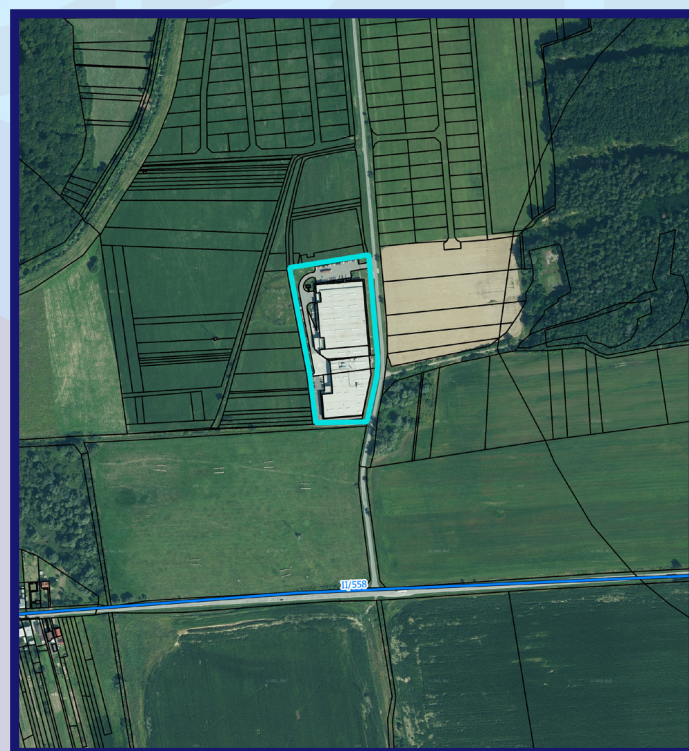
Connection to water supply network

**yes, DN 160**



Connection to sewer system

**yes, DN 250**



Type of ownership **mixed**

Land and properties owned by the city and a private company.



Area **2.71 ha**

Area available

**0 ha**

Expansion capacity

**no**

District

**HUMENNÉ**

48°56'02.5"N 22°01'11.6"E



**TIME ACCESSIBILITY TO THE PARK**

Park type **POTENTIAL**



Road access  
**directly to 1st class road I/74**

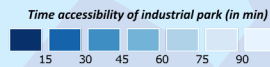
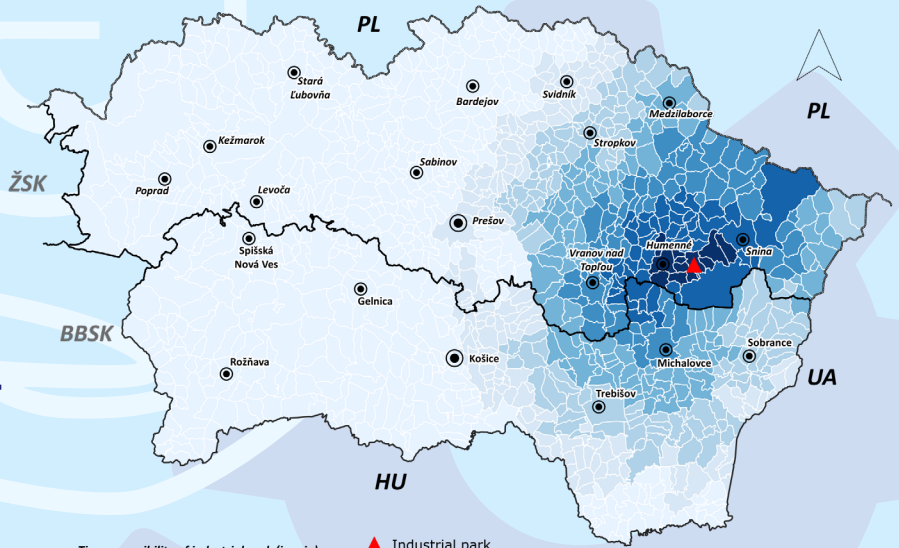
Highway access  
**65 km**



Railroad access  
**<1 km**



Population living within 45-minute  
commuting distance  
**196,178**



- ▲ Industrial park
- District city
- Regional city

— Region border  
— Country border



Connection to electrical  
network  
**planned**



Connection to  
water supply network  
**planned**



Connection to sewer system  
**planned**



Type of ownership  
**mixed**

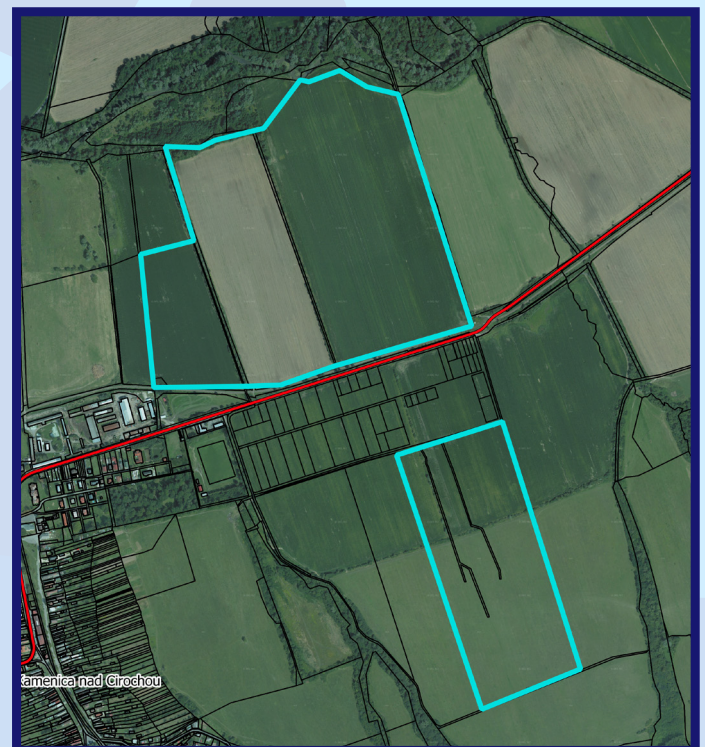
Land and properties  
owned by the city and  
a private company.



Area  
**7.5 ha**

Area available  
**7.5 ha**

Expansion capacity  
**no**



# 26 HUMENNÉ – BROWN PARK

District

**HUMENNÉ**

48°55'59.6"N 21°53'20.3"E



**TIME ACCESSIBILITY TO THE PARK**

Park type **BROWN**



Road access

**directly to 1st class road I/74**

Highway access

**70 km**



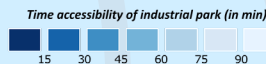
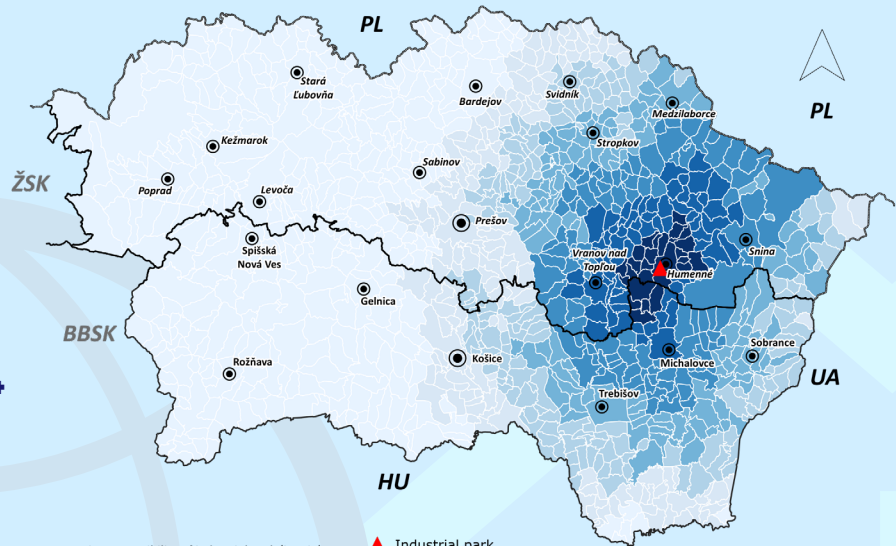
Railroad access

**<1 km**



Population living within 45-minute commuting distance

**254,590**



- ▲ Industrial park
- District city
- Regional city

— Region border 0 10 20 30 km  
— Country border



Connection to electrical network

**1,2 MW**



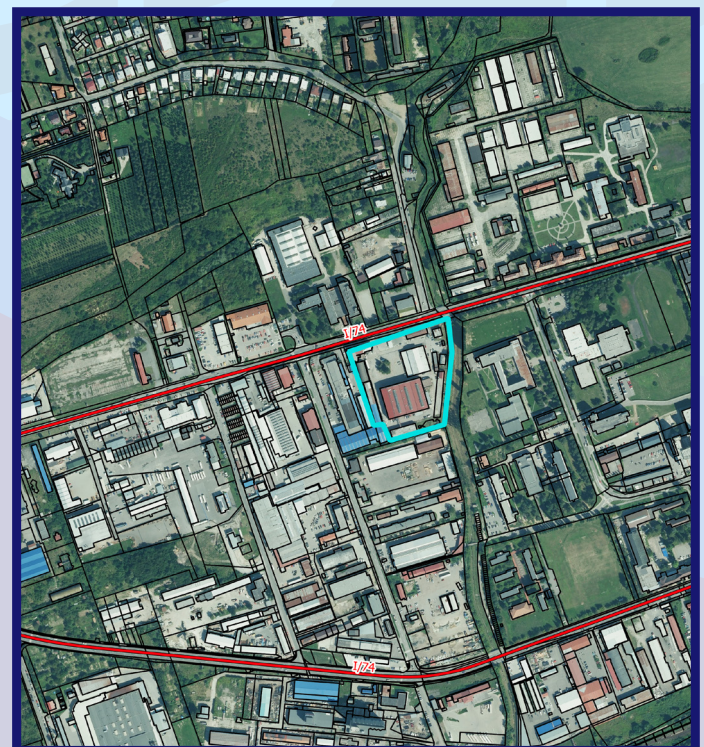
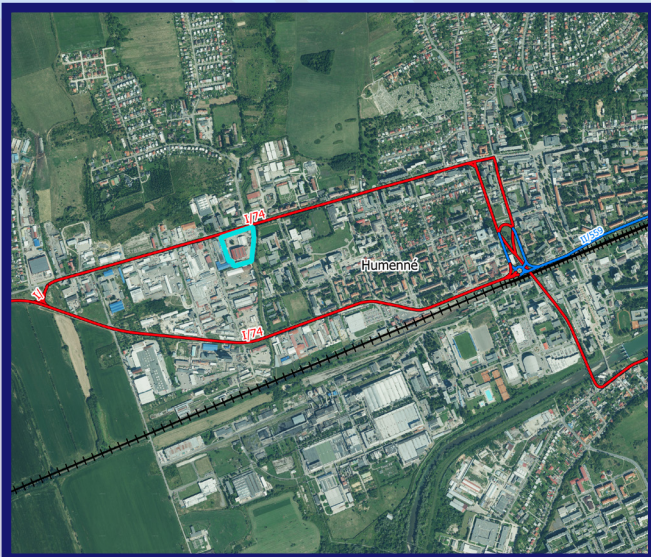
Connection to water supply network

**yes, DN 100**



Connection to sewer system

**yes, DN 300**



Type of ownership  
**mixed**

A machinery hall is on offer for sale including free premises around it.



Area  
**2 ha**

Area available  
**2 ha**

Expansion capacity  
**no**

# KEŽMAROK



District area  
**629.88 km<sup>2</sup>**

Population of the district  
**74,232**



EAP in the district  
**32,424**

Unemployment rate  
**17.33%**

Average gross monthly salary  
**€1,001**



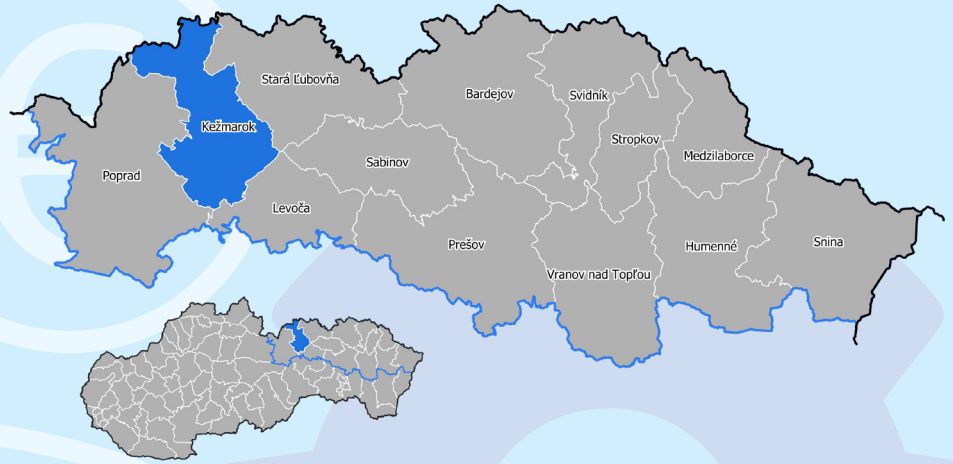
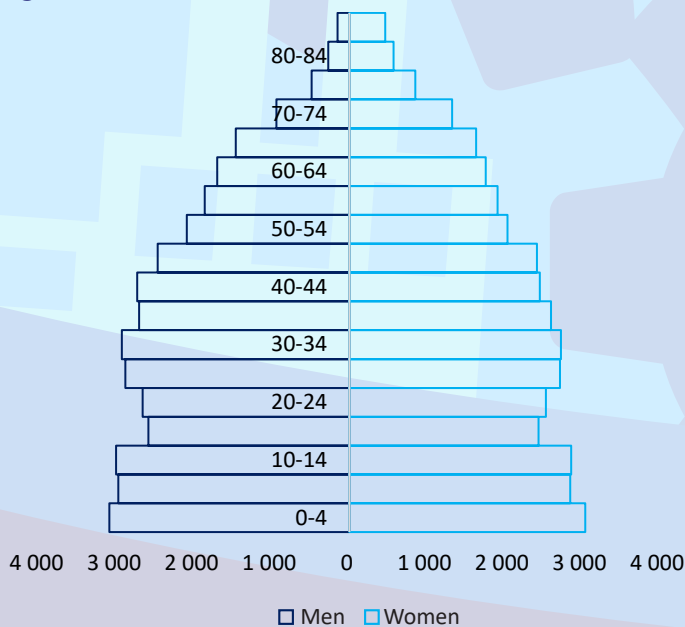
Schools of secondary education  
**9**

Students in secondary education  
**2,110**

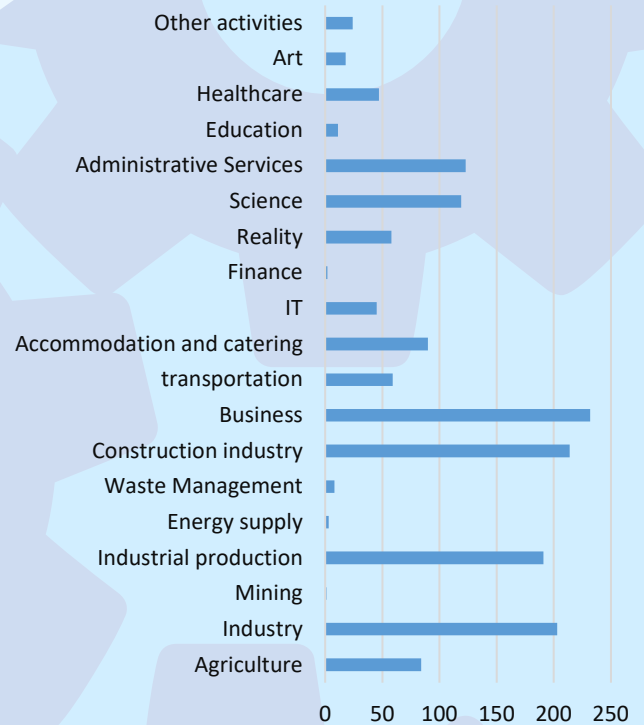
Students in dual education  
**58**



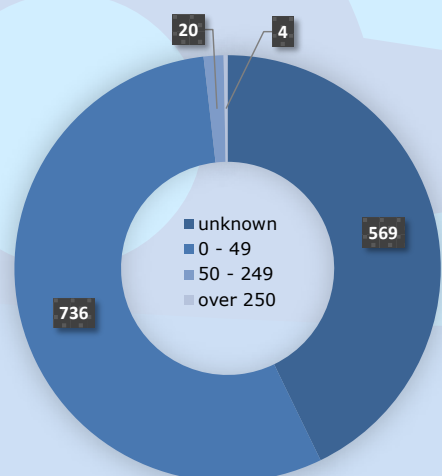
## AGE PYRAMID



## STRUCTURE OF ENTERPRISES BY ECONOMIC ACTIVITIES



## STRUCTURE OF ENTERPRISES BY NUMBER OF EMPLOYEES



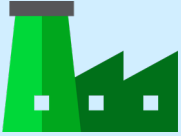
District

**KEŽMAROK** 49°07'55.7"N 20°24'32.5"E



**TIME ACCESSIBILITY TO THE PARK**

Park type **GREEN**



Road access

**<1 km to 1st class road I/66**

Highway access

**12 km**



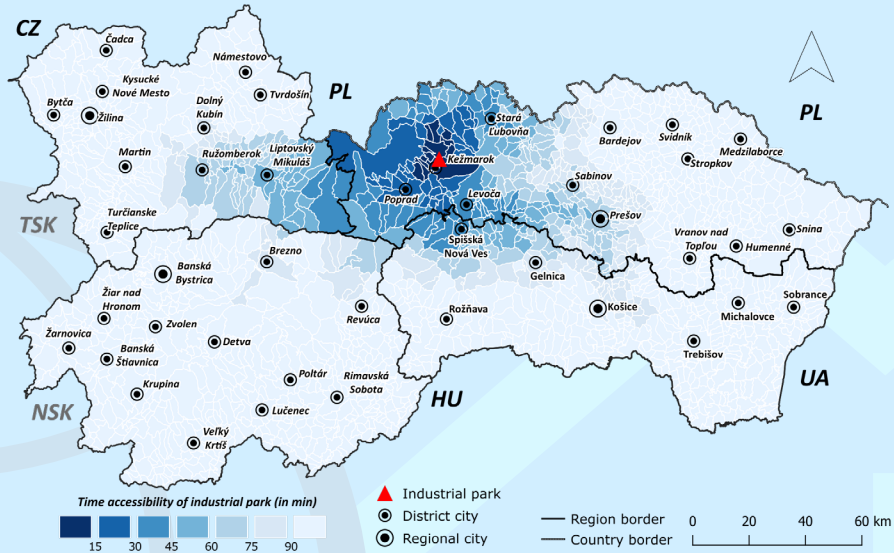
Railroad access

**4 km**



Population living within 45-minute commuting distance

**299,568**



Connection to electrical network

**0,5 MW**



Connection to water supply network

**yes, DN 250**



Connection to sewer system

**yes, DN 300**



Type of ownership **mixed**

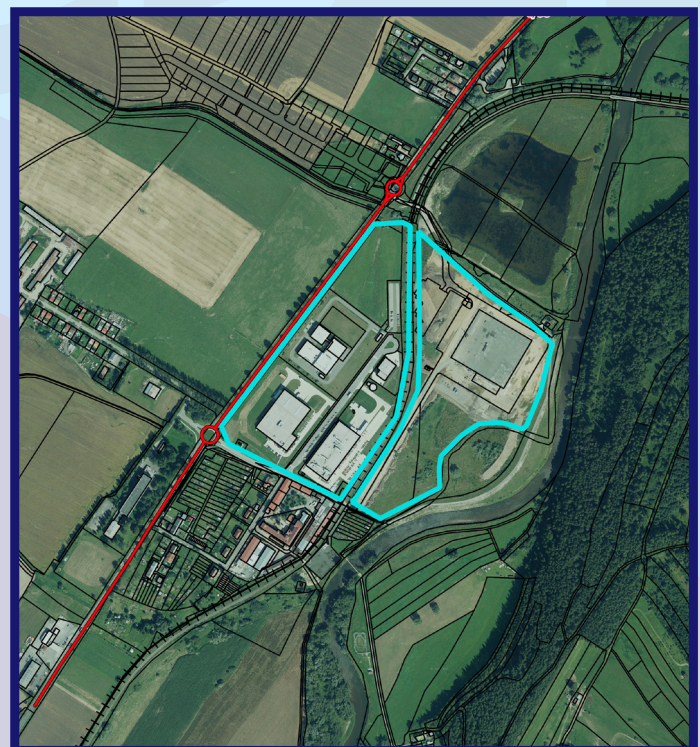
Land and properties owned by the city and a private company.



Area **17.6 ha**

Area available **0 ha**

Expansion capacity **no**



# VEĽKÁ LOMNICA

3

District

**KEŽMAROK** 49°06'20.9"N 20°20'33.3"E



**TIME ACCESSIBILITY TO THE PARK**

Park type **GREEN**



Road access  
**directly to 1st class road I/66**

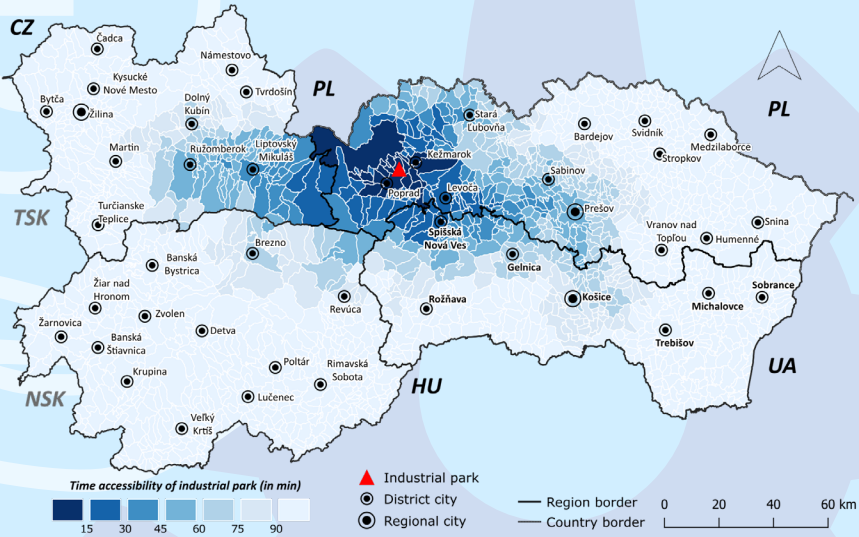
Highway access  
**4 km**



Railroad access  
**<1 km**



Population living within 45-minute  
commuting distance  
**366,120**



Connection to electrical  
network  
**10 MW**



Connection to  
water supply network  
**yes, DN 200**



Connection to sewer system  
**yes, DN 300**



Type of ownership  
**private**

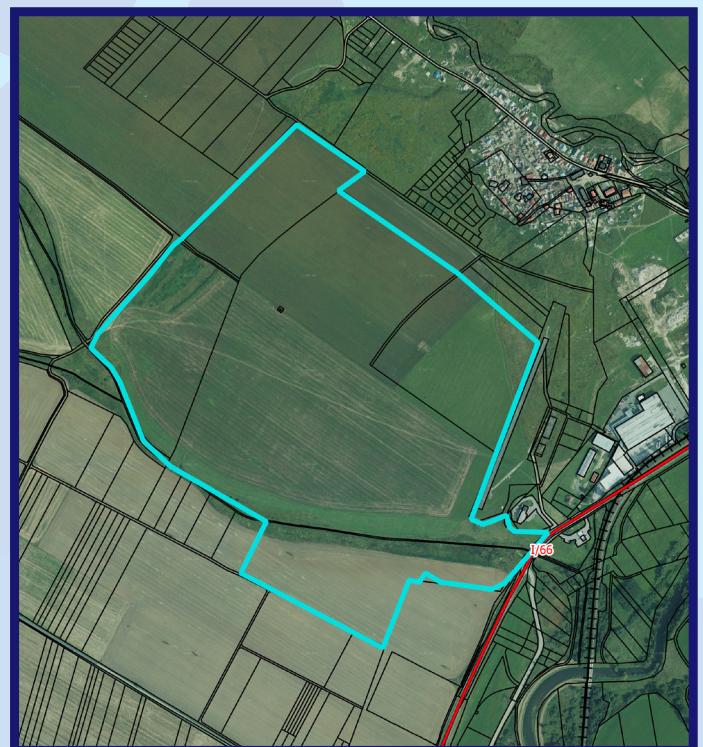
Parcels in private  
ownership.



Area  
**57 ha**

Area available  
**57 ha**

Expansion capacity  
**yes**



# LEVOČA



District area  
**421 km<sup>2</sup>**

Population of the district  
**33,127**



EAP in the district  
**15,578**

Unemployment rate  
**10.61%**

Average gross monthly salary  
**€1,156**



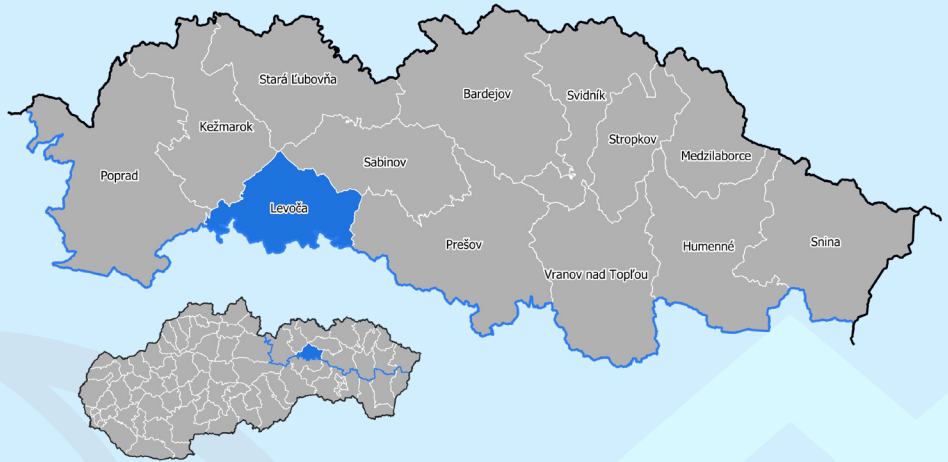
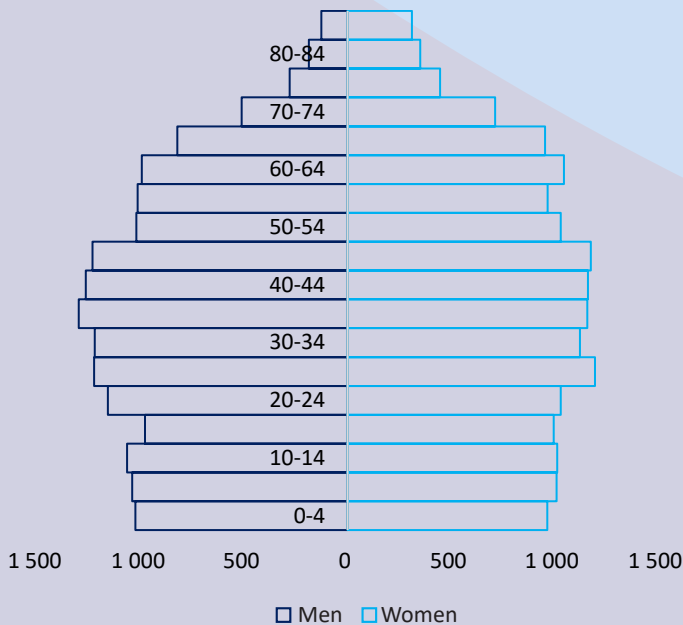
Schools of secondary education  
**9**

Students in secondary education  
**1,677**

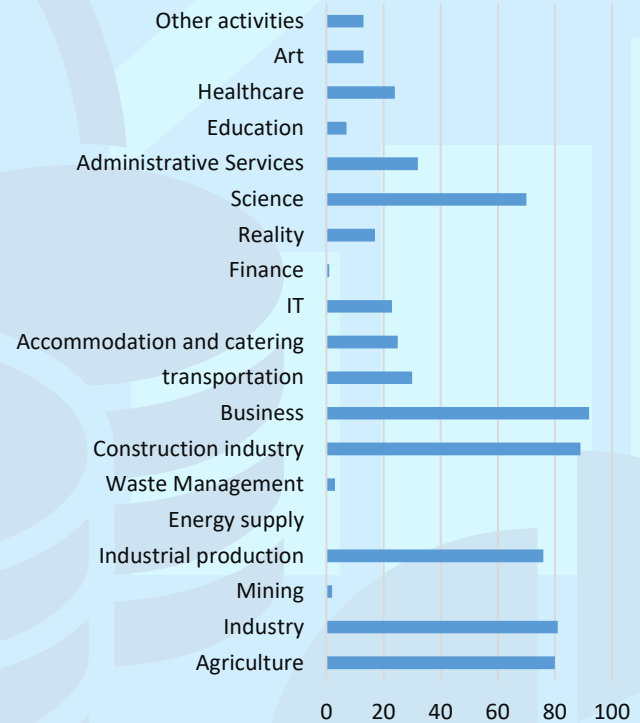
Students in dual education  
**2**



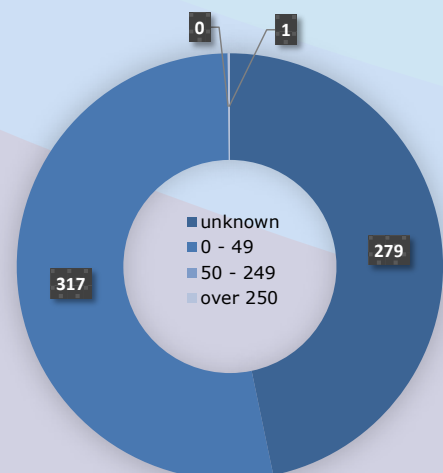
## AGE PYRAMID



## STRUCTURE OF ENTERPRISES BY ECONOMIC ACTIVITIES



## STRUCTURE OF ENTERPRISES BY NUMBER OF EMPLOYEES



District

**LEVOČA**

49°00'38.9"N 20°35'15.5"E



**TIME ACCESSIBILITY TO THE PARK**

Park type **BROWN**



Road access  
**directly to 2nd class road no. 533**

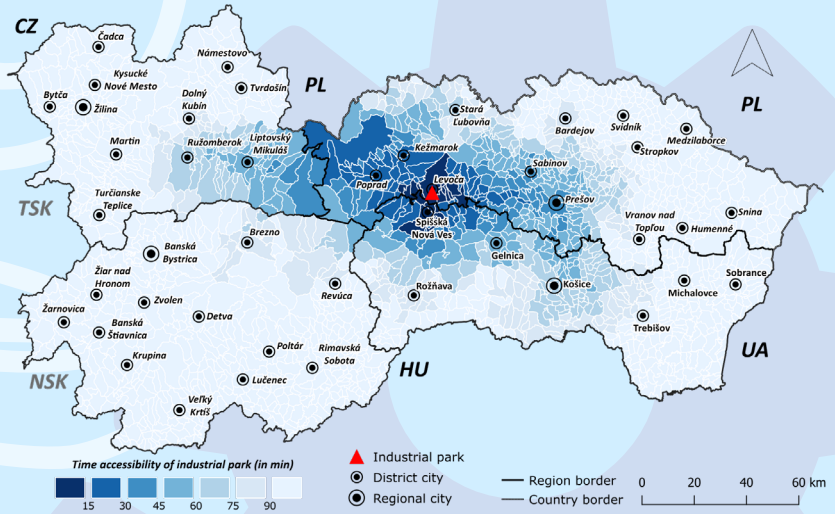
Highway access  
**2.5 km**



Railroad access  
**1 km**



Population living within 45-minute commuting distance  
**432,789**



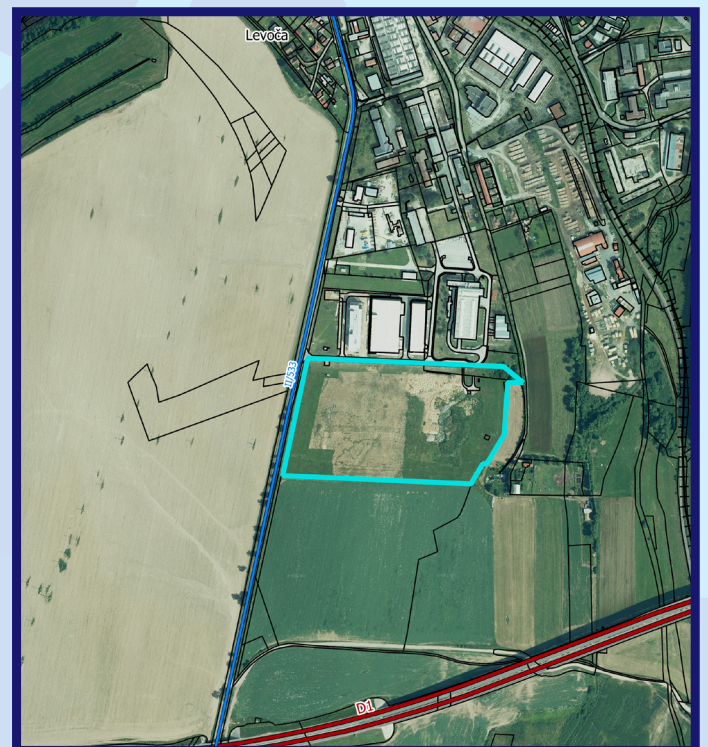
Connection to electrical network  
**1,2 MW**



Connection to water supply network  
**yes, DN 100**



Connection to sewer system  
**yes, DN 250**



Type of ownership  
**municipal**

Land and properties owned by the city.



Area  
**6.5 ha**

Area available  
**2.7 ha**

Expansion capacity  
**no**

# MEDZILABORCE



District area  
**427.5 km<sup>2</sup>**

Population of the district  
**10,870**



EAP in the district  
**5,504**

Unemployment rate  
**13.62%**

Average gross monthly salary  
**€1,096**



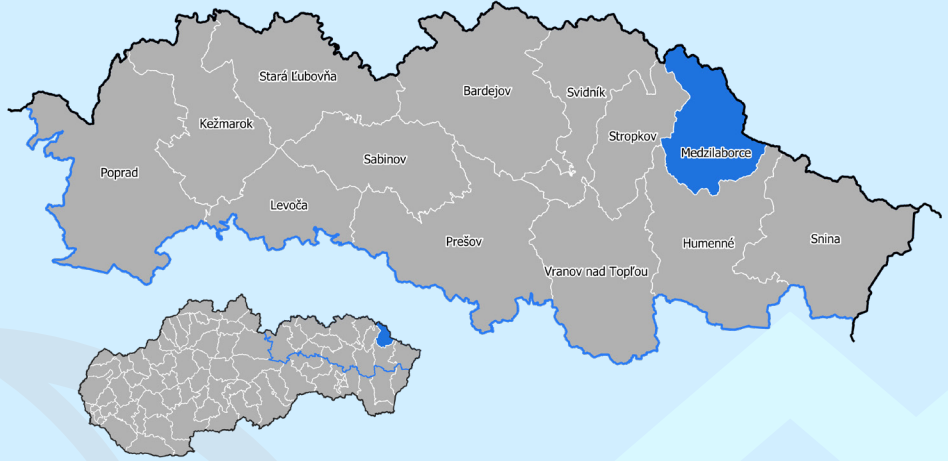
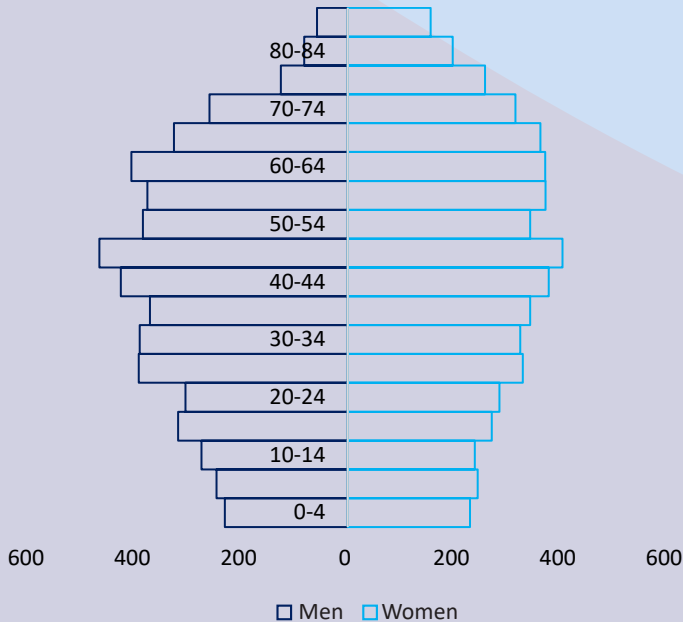
Schools of secondary education  
**2**

Students in secondary education  
**272**

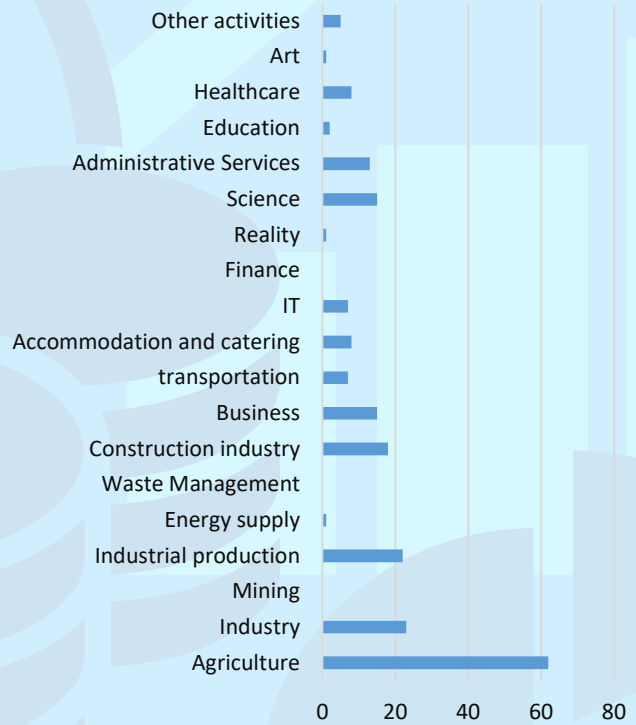
Students in dual education  
**12**



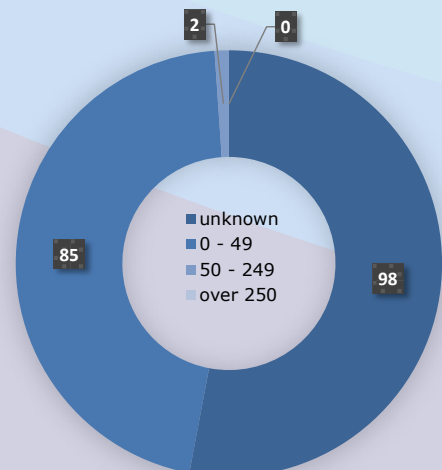
## AGE PYRAMID



## STRUCTURE OF ENTERPRISES BY ECONOMIC ACTIVITIES



## STRUCTURE OF ENTERPRISES BY NUMBER OF EMPLOYEES



District

**MEDZILABORCE**

49°16'41.3"N 21°54'09.4"E



**TIME ACCESSIBILITY TO THE PARK**

Park type **GREEN**



Road access  
**directly to 2nd class road no. 559**

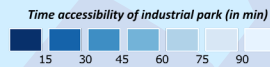
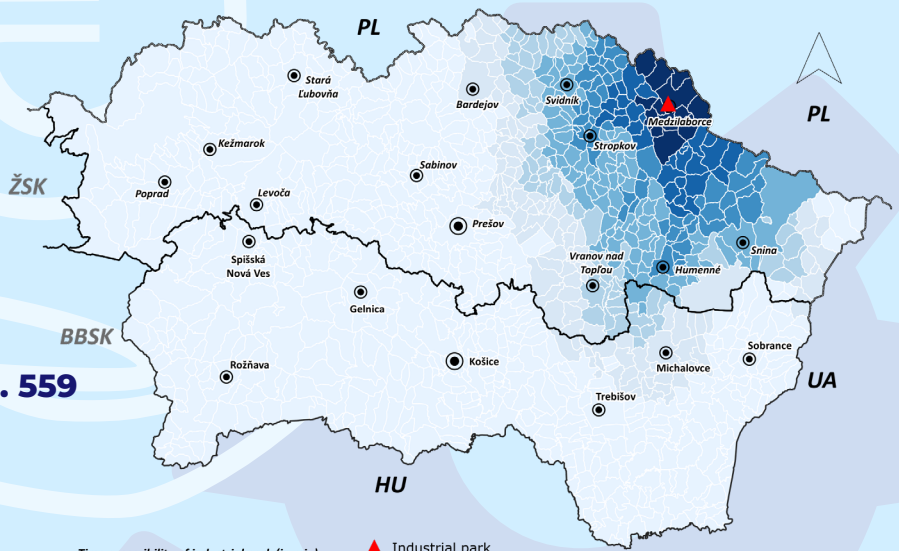
Highway access  
**85 km**



Railroad access  
**<1 km**



Population living within 45-minute  
commuting distance  
**74,943**



- ▲ Industrial park
- District city
- Regional city

— Region border  
— Country border

0 10 20 30 km



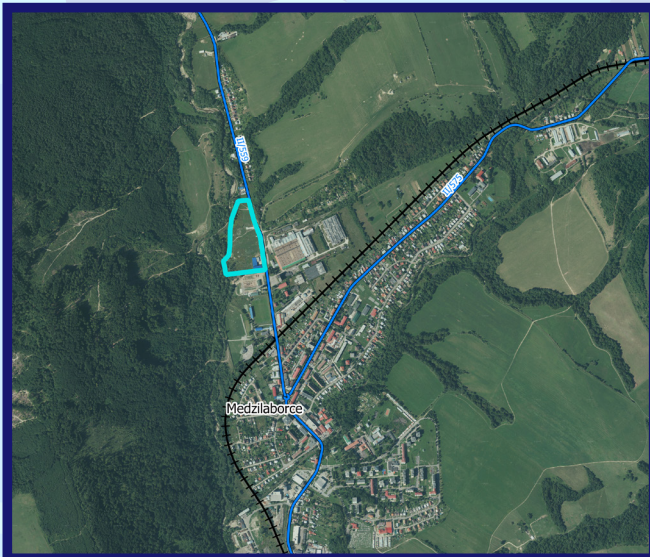
Connection to electrical  
network  
**22 MW**



Connection to  
water supply network  
**yes, DN 600**



Connection to sewer system  
**yes, DN 600**



Type of ownership  
**municipal**

Land and properties  
owned by the city.



Area  
**4.69 ha**

Area available  
**2 ha**

Expansion capacity  
**no**

District

**MEDZILABORCE** 49°16'42.0"N 21°54'00.7"E



**TIME ACCESSIBILITY TO THE PARK**

Park type **POTENTIAL**



Road access  
**directly to 2nd class road no. 559**

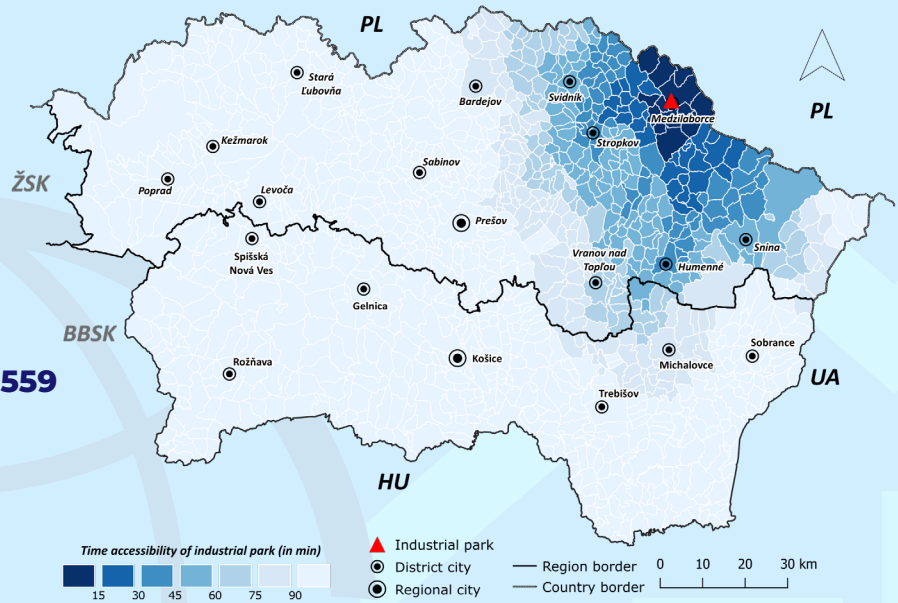
Highway access  
**85 km**



Railroad access  
**<500 m**



Population living within 45-minute  
commuting distance  
**74,943**



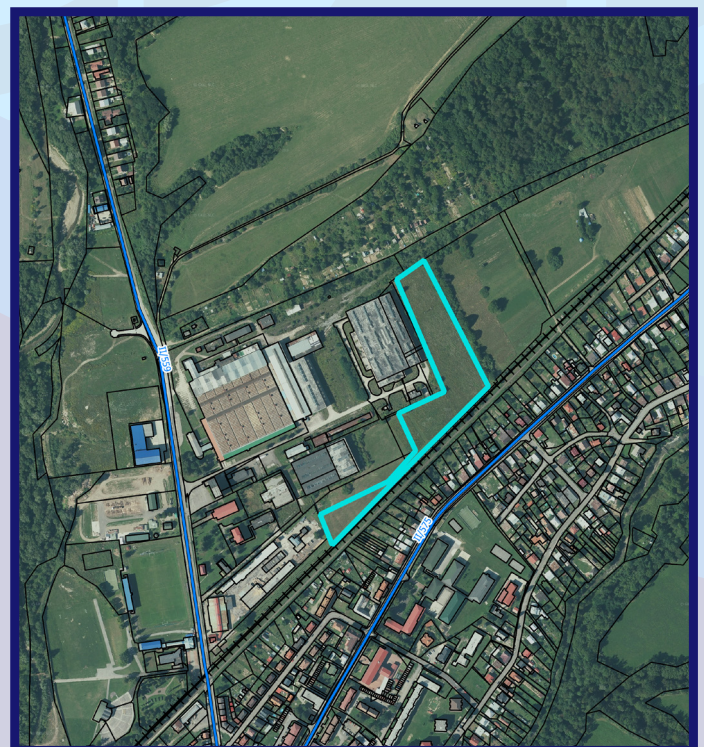
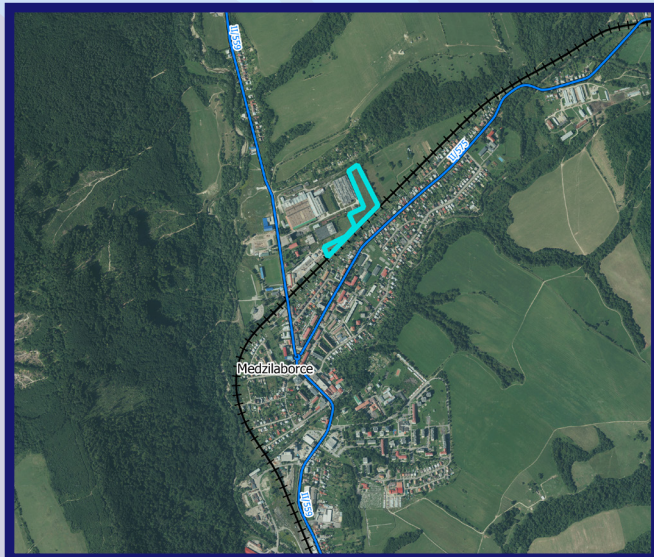
Connection to electrical  
network  
**planned**



Connection to  
water supply network  
**planned**



Connection to sewer system  
**planned**



Type of ownership  
**mixed**

Land and properties  
owned by the city and  
a private company.



Area  
**21 ha**

Area available  
**21 ha**

Expansion capacity  
**no**

# POP RAD



District area  
**1,104.65 km<sup>2</sup>**

Population of the district  
**102,469**



EAP in the district  
**53,918**

Unemployment rate  
**7.03%**

Average gross monthly salary  
**€1,197**



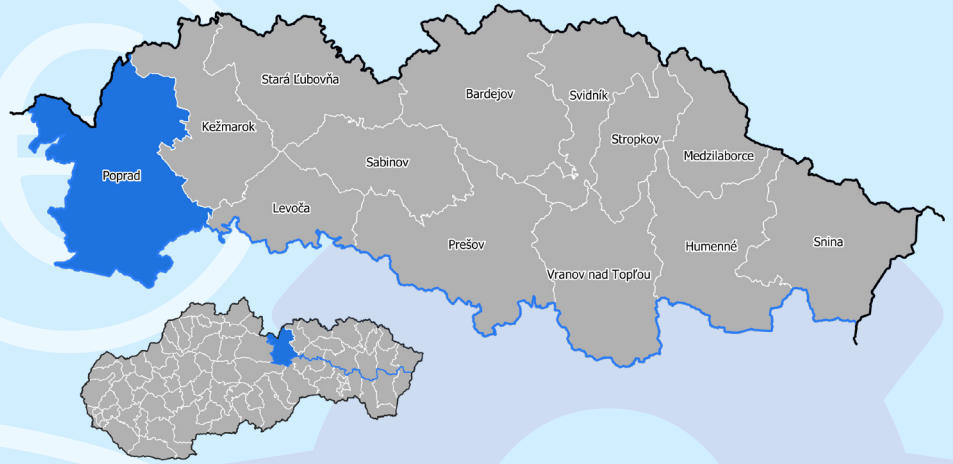
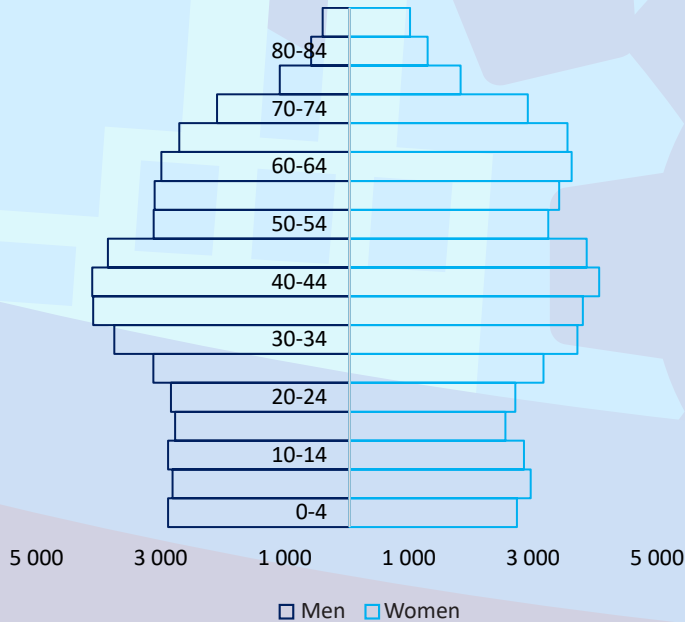
Schools of secondary education  
**18**

Students in secondary education  
**5,258**

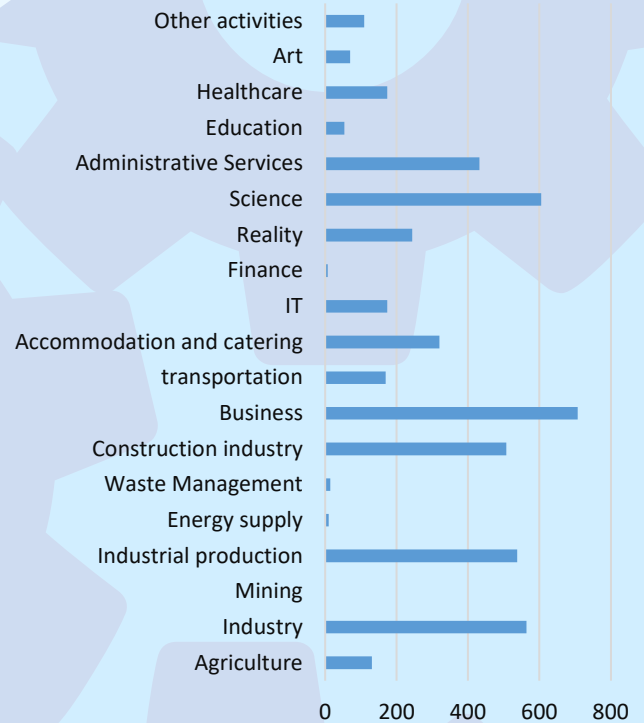
Students in dual education  
**323**



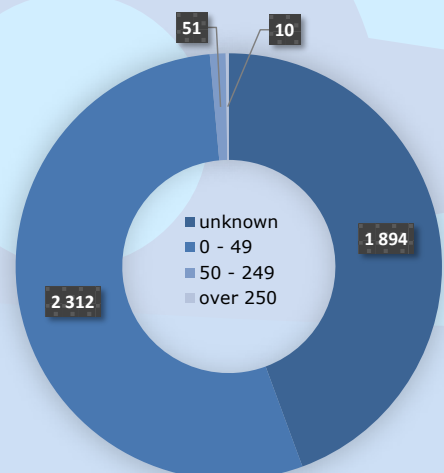
## AGE PYRAMID



## STRUCTURE OF ENTERPRISES BY ECONOMIC ACTIVITIES



## STRUCTURE OF ENTERPRISES BY NUMBER OF EMPLOYEES



District

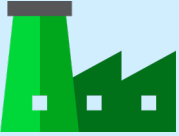
**POPRAD**

49°04'40.4"N 20°18'43.2"E



**TIME ACCESSIBILITY TO THE PARK**

Park type **GREEN**



Road access

**<1 km to D1 highway**

Highway access

**<1 km**



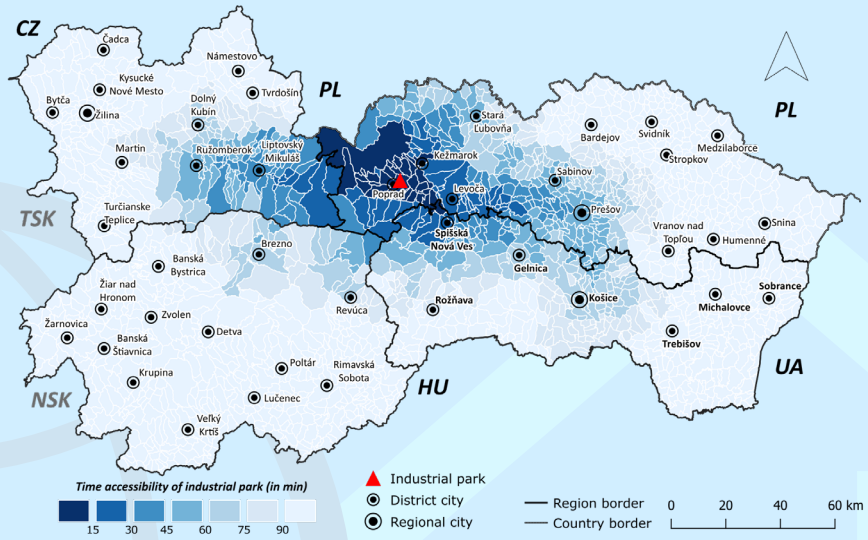
Railroad access

**1.6 km**



Population living within 45-minute commuting distance

**401,991**



Connection to electrical network

**7.8 MW**



Connection to water supply network

**yes, DN 250**



Connection to sewer system

**yes, DN 200**



Type of ownership **mixed**

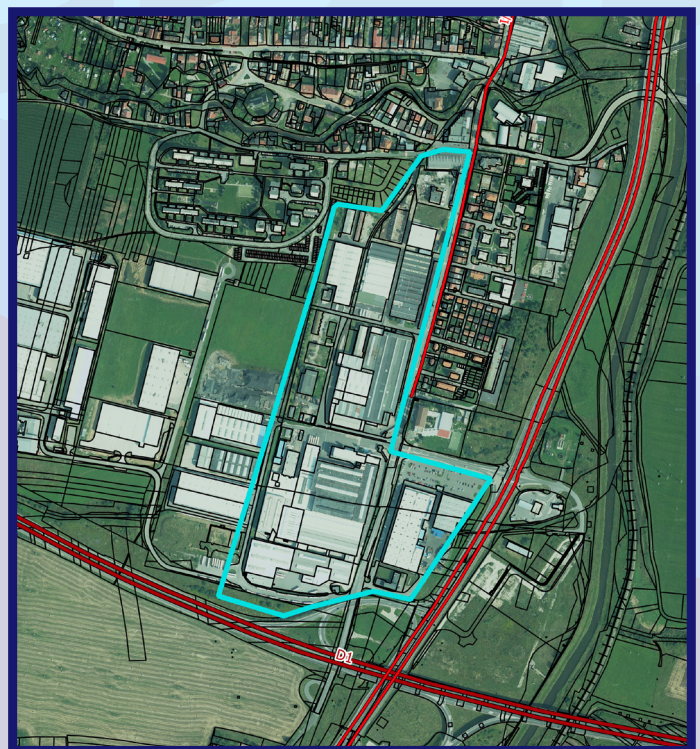
Land and properties owned by the city and SPF (National Property Fund).



Area **21.09 ha**

Area available **12 ha**

Expansion capacity **no**



# SVIT - CHEMOSVIT

1

District

**POPRAD**

49°03'20.9"N 20°10'43.7"E



**TIME ACCESSIBILITY TO THE PARK**

Park type **BROWN**



Road access

**directly to 1st class road I/18**

Highway access

**1 km**



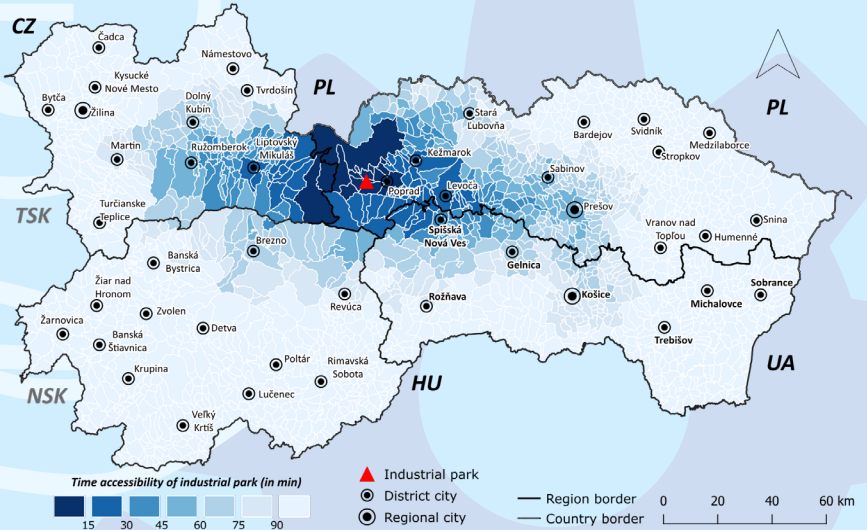
Railroad access

**1.5 km**



Population living within 45-minute commuting distance

**359,879**



Connection to electrical network

**70 MW**



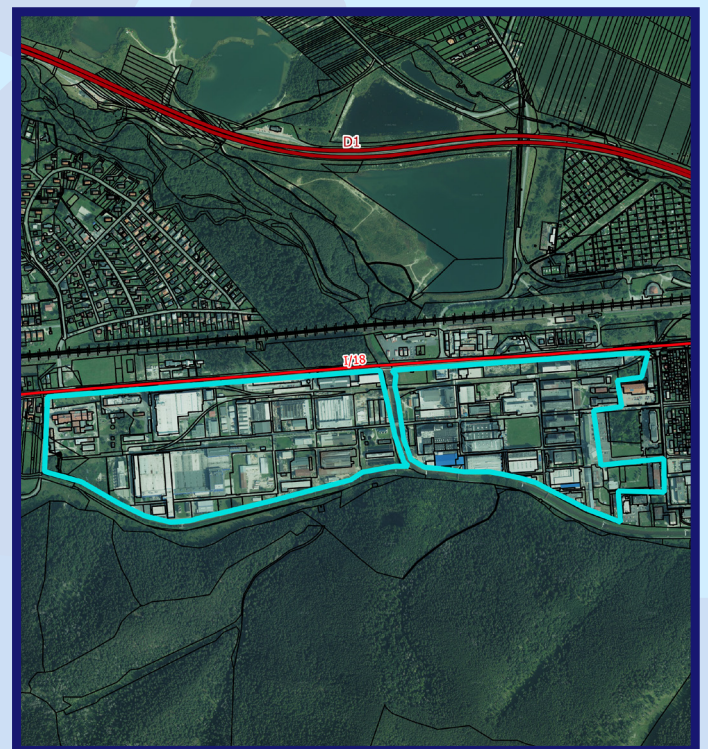
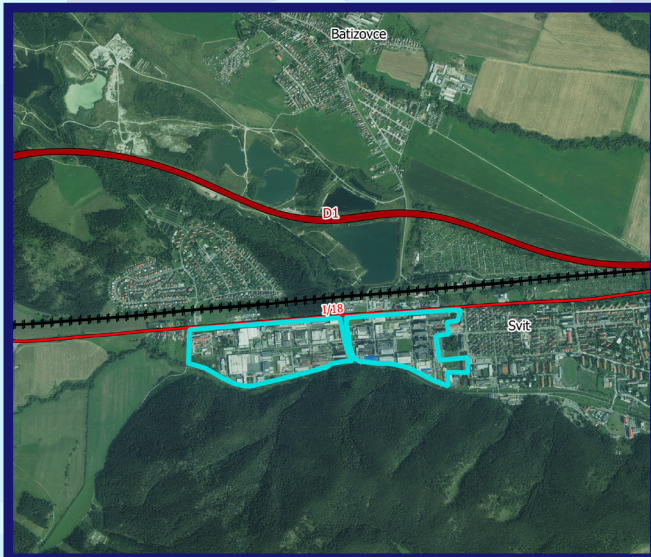
Connection to water supply network

**yes, DN 300**



Connection to sewer system

**yes, DN 300**



Type of ownership

**private**

Land and properties owned by natural persons and private companies.



Area

**58 ha**

Area available

**0.5 ha**

Expansion capacity

**no**

# PREŠOV



District area  
**933.96 km<sup>2</sup>**

Population of the district  
**173,187**



EAP in the district  
**84,027**

Unemployment rate  
**8.94%**

Average gross monthly salary  
**€1,155**



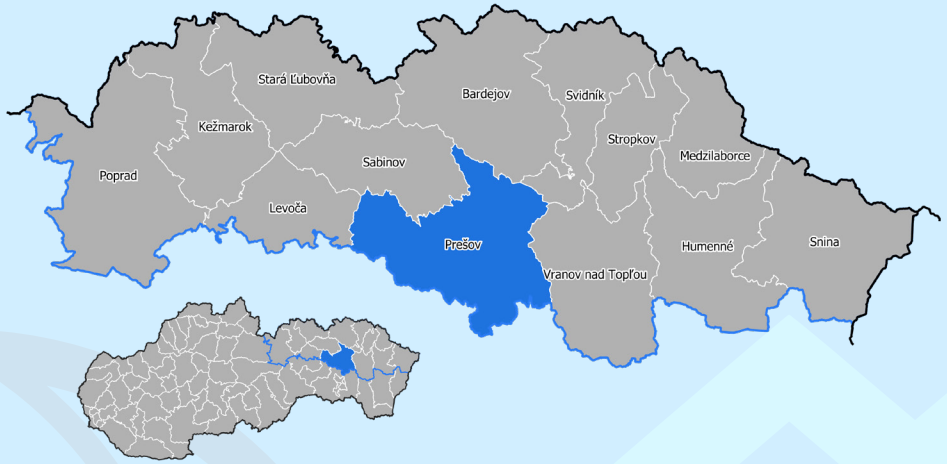
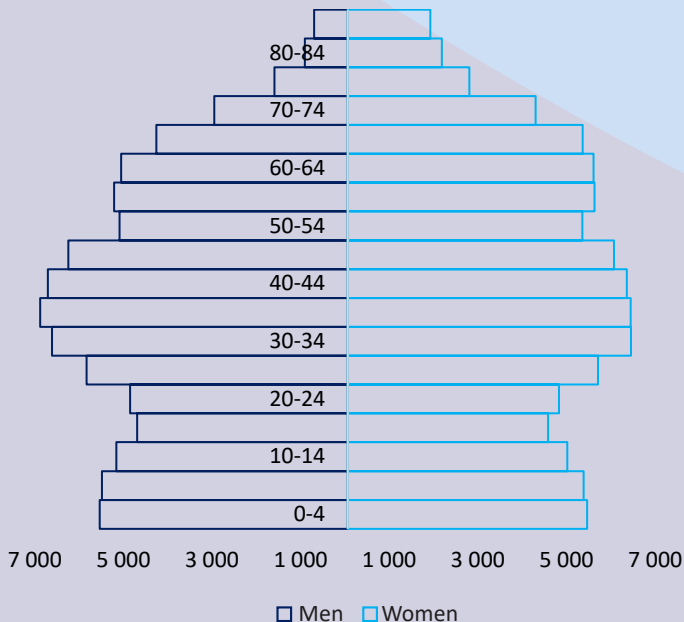
Schools of secondary education  
**37**

Students in secondary education  
**10,478**

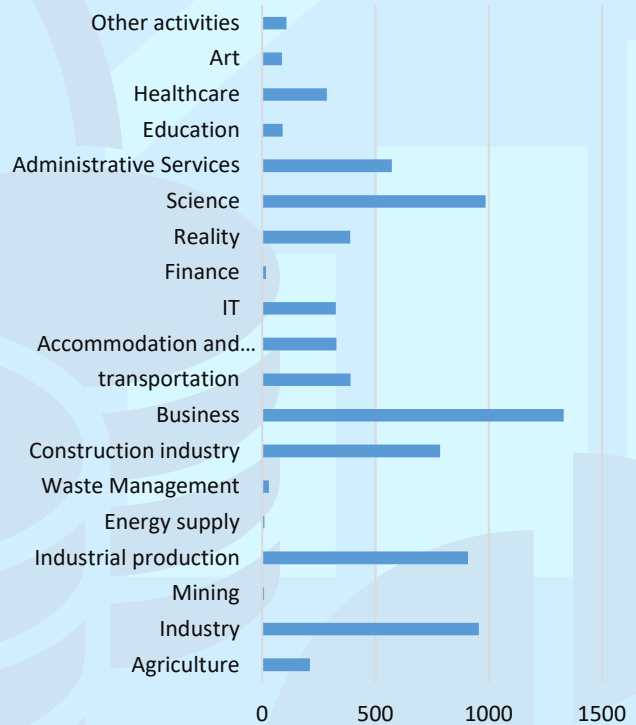
Students in dual education  
**512**



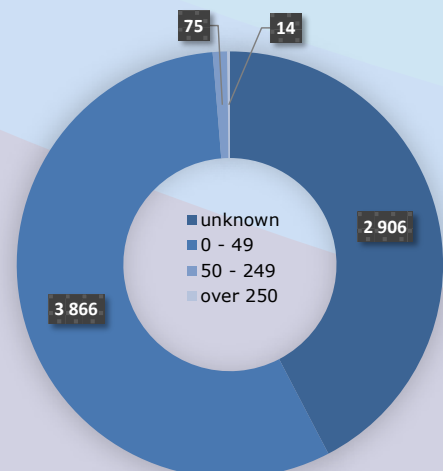
## AGE PYRAMID



## STRUCTURE OF ENTERPRISES BY ECONOMIC ACTIVITIES



## STRUCTURE OF ENTERPRISES BY NUMBER OF EMPLOYEES



# PREŠOV - GRÓFSKE

12

District

**PREŠOV**

49°01'52.0"N 21°18'00.8"E



**TIME ACCESSIBILITY TO THE PARK**

Park type **GREEN**



Road access  
**directly to 1st class road I/18**

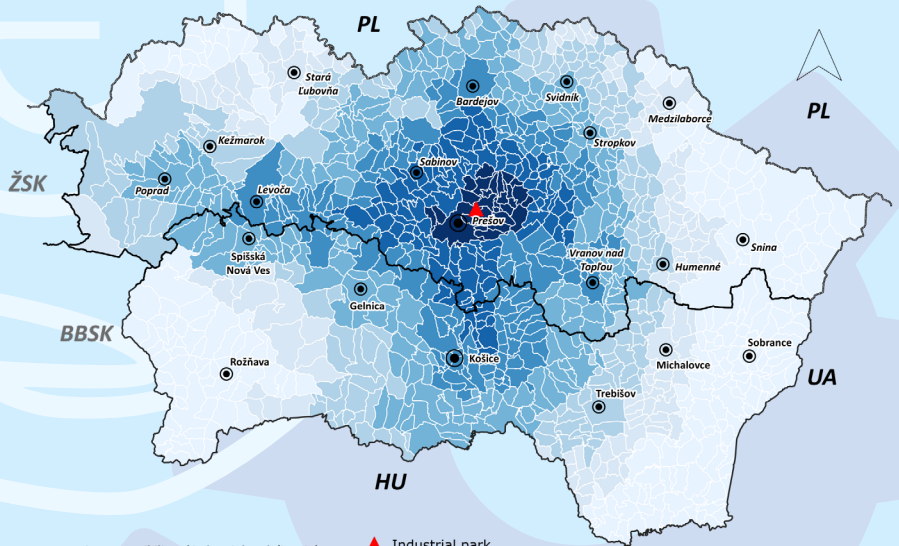
Highway access  
**3 km**



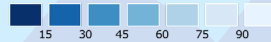
Railroad access  
**3 km**



Population living within 45-minute  
commuting distance  
**650,764**



Time accessibility of industrial park (in min)



▲ Industrial park

● District city

● Regional city

— Region border

— Country border

0 10 20 30 km



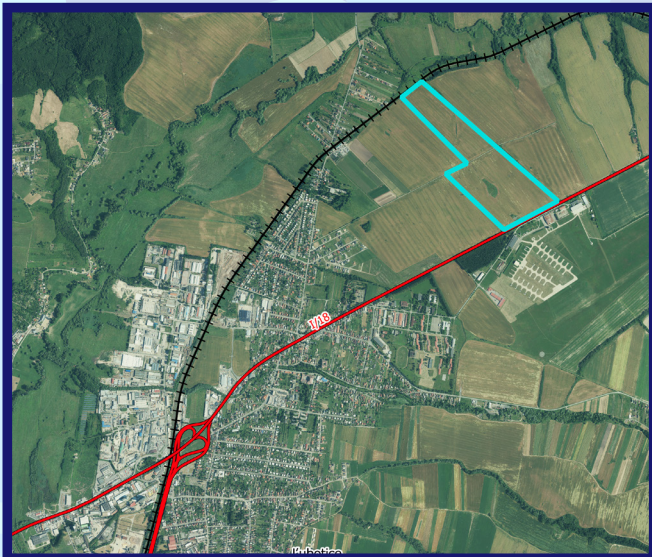
Connection to electrical  
network  
**20 MW**



Connection to  
water supply network  
**yes, DN 90**



Connection to sewer system  
**yes, DN 300**



Type of ownership  
**private**

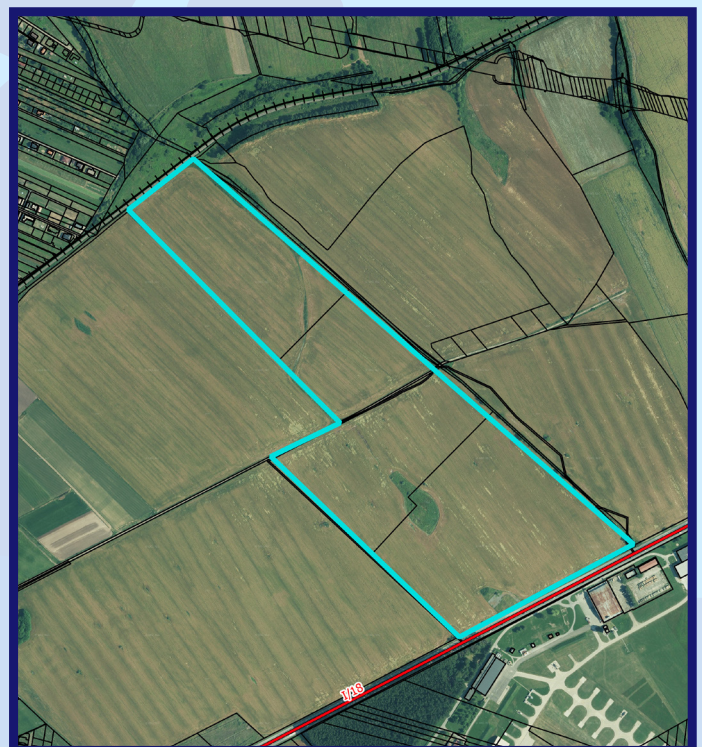
Parcels owned by  
a private company.



Area  
**45 ha**

Area available  
**45 ha**

Expansion capacity  
**yes**



District

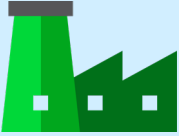
**PREŠOV**

48°56'50.4"N 21°15'32.3"E



**TIME ACCESSIBILITY TO THE PARK**

Park type **GREEN**



Road access

**500 m to D1 highway**

Highway access

**500 m**



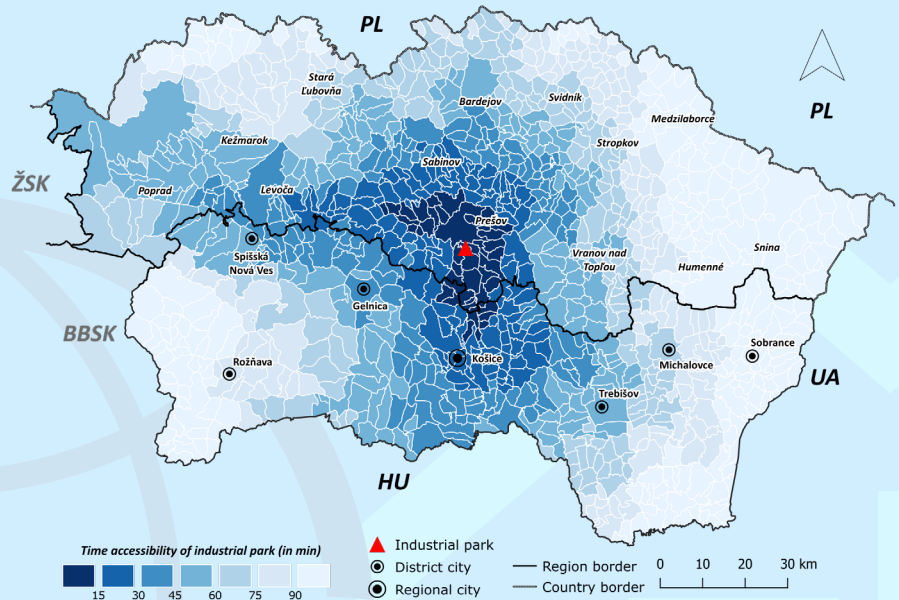
Railroad access

**2 km**



Population living within 45-minute commuting distance

**670,635**



Connection to electrical network

**7 MW**



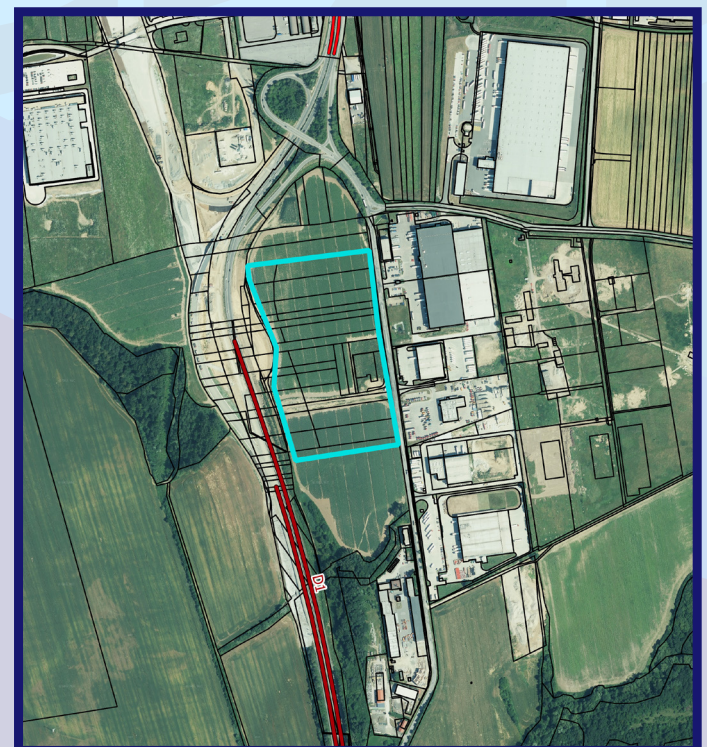
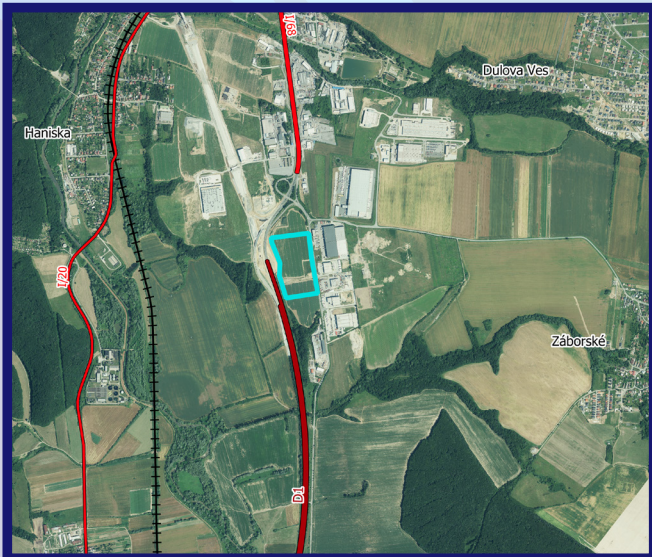
Connection to water supply network

**yes, DN 300**



Connection to sewer system

**yes, DN 700**



Type of ownership **mixed**

Parcels owned by the city, SPF (Slovak Property Fund) and a private company.



Area **8.53 ha**

Area available **2.5 ha**

Expansion capacity **no**

District

**PREŠOV**

48°57'25.3"N 21°15'50.0"E



**TIME ACCESSIBILITY TO THE PARK**

Park type **GREEN**



Road access  
**<1 km to D1 highway**

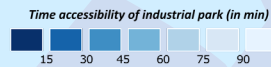
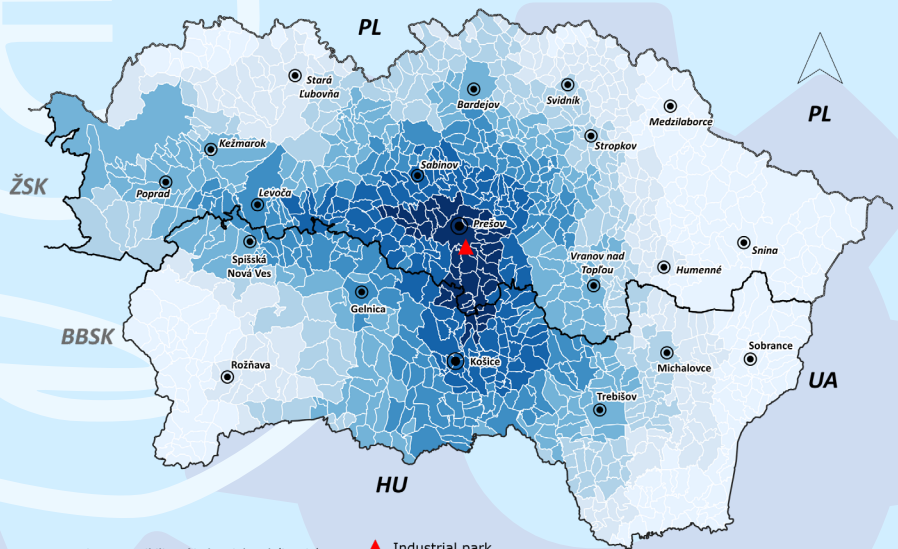
Highway access  
**<1 km**



Railroad access  
**2 km**



Population living within 45-minute  
commuting distance  
**670,635**



▲ Industrial park  
● District city  
● Regional city  
— Region border  
— Country border  
0 10 20 30 km



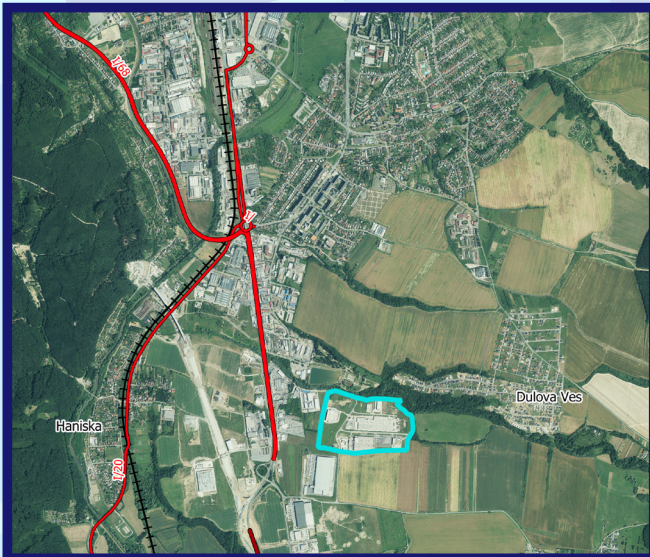
Connection to electrical  
network  
**10.3 MW**



Connection to  
water supply network  
**yes, DN 200**



Connection to sewer system  
**yes, DN 400**



Type of ownership  
**mixed**

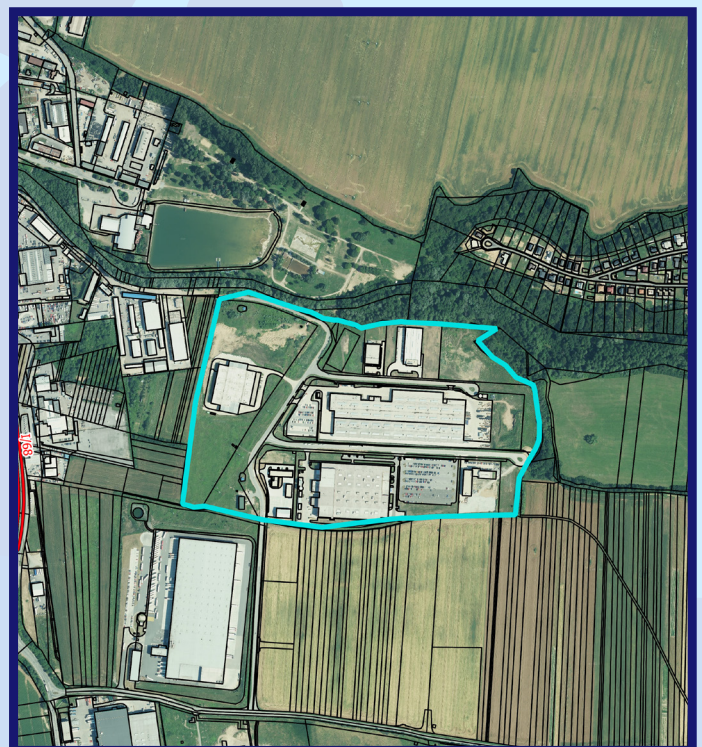
Parcels owned by natural  
persons and private  
companies.



Area  
**24.63 ha**

Area available  
**5.69 ha**

Expansion capacity  
**no**



# 11 PREŠOV – GRÓFSKE (ENVIRONS)

District

**PREŠOV**

49°01'52.0"N 21°18'00.8"E



**TIME ACCESSIBILITY TO THE PARK**

Park type **POTENTIAL**



Road access

**directly to 1st class road I/18**

Highway access

**3 km**



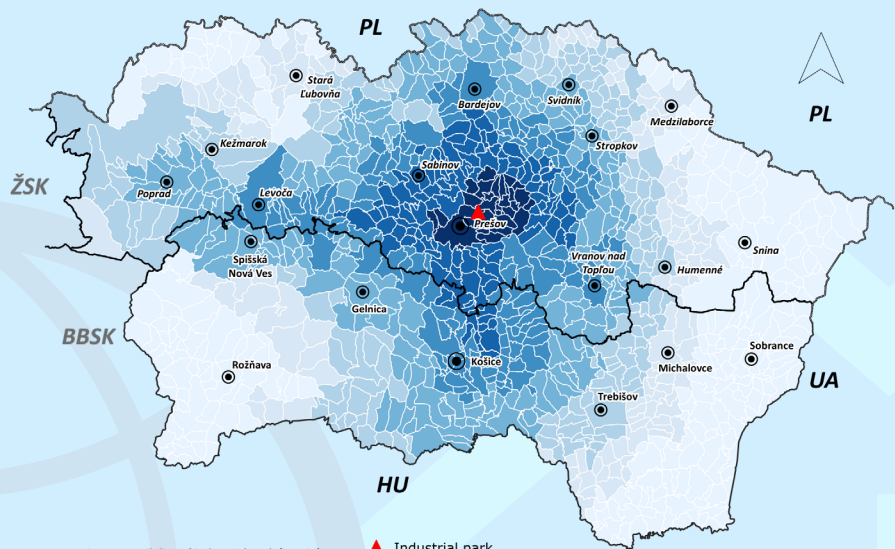
Railroad access

**3 km**

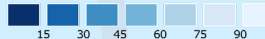


Population living within 45-minute commuting distance

**650,764**



Time accessibility of industrial park (in min)



▲ Industrial park

● District city

● Regional city

— Region border

— Country border

0 10 20 30 km



Connection to electrical network

**planned**



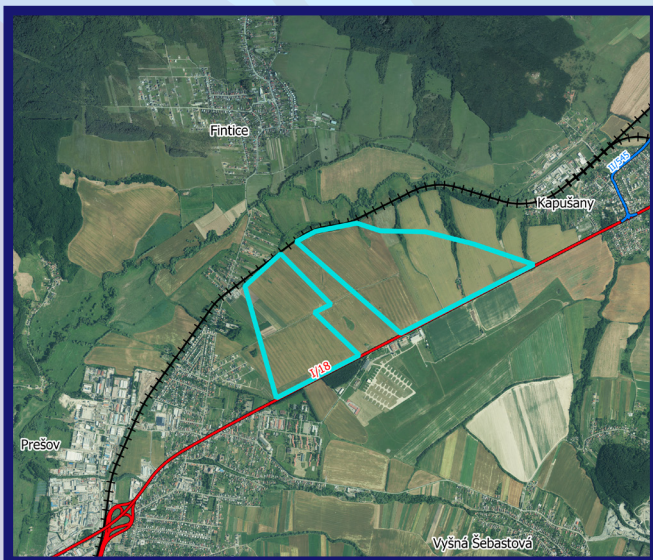
Connection to water supply network

**planned**



Connection to sewer system

**planned**



Type of ownership

**mixed**

Parcels owned by natural persons and private companies.



Area

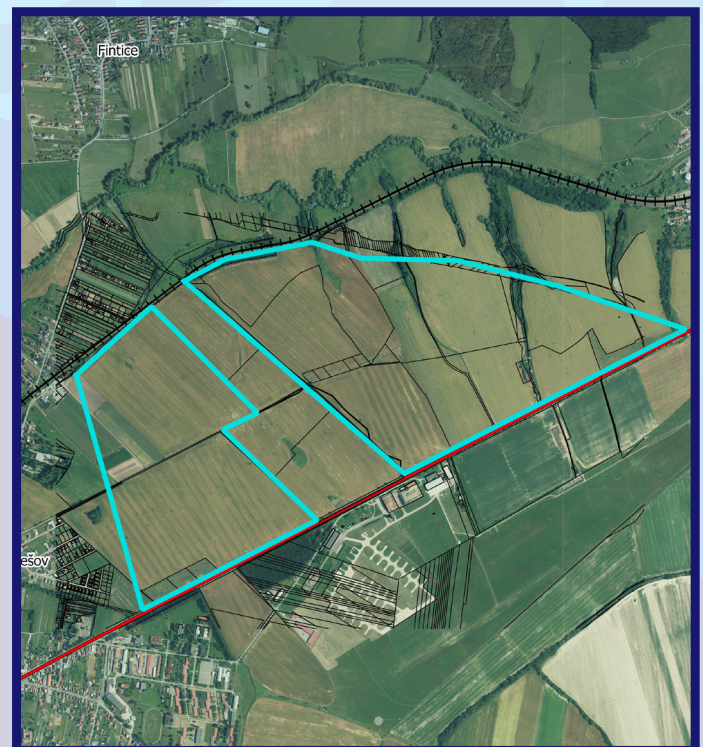
**300 ha**

Area available

**300 ha**

Expansion capacity

**no**



District

**PREŠOV**

48°57'10.5"N 21°16'29.0"E



**TIME ACCESSIBILITY TO THE PARK**

Park type **POTENTIAL**



Road access

**<1 km to DI highway through local road**

Highway access

**<1 km**



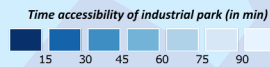
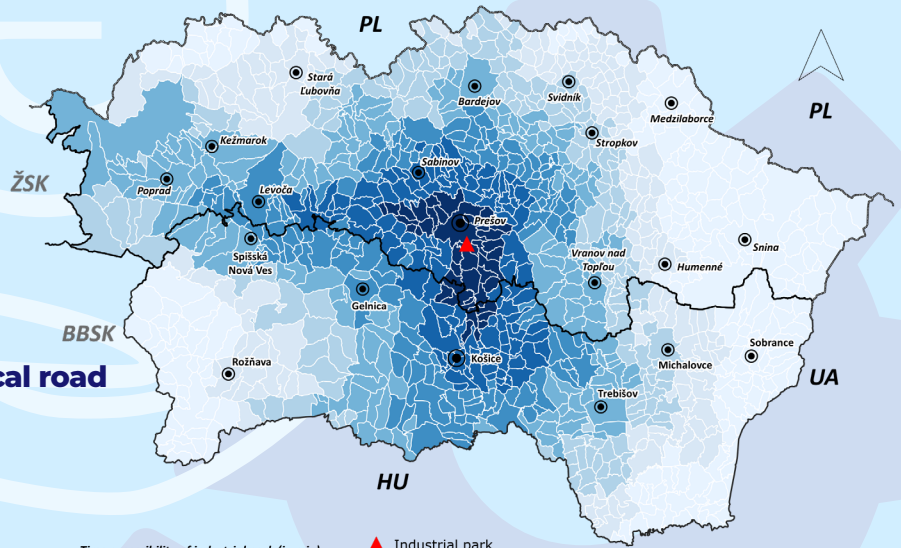
Railroad access

**2 km**



Population living within 45-minute commuting distance

**670,635**



- ▲ Industrial park
- District city
- Regional city

— Region border 0 10 20 30 km  
— Country border



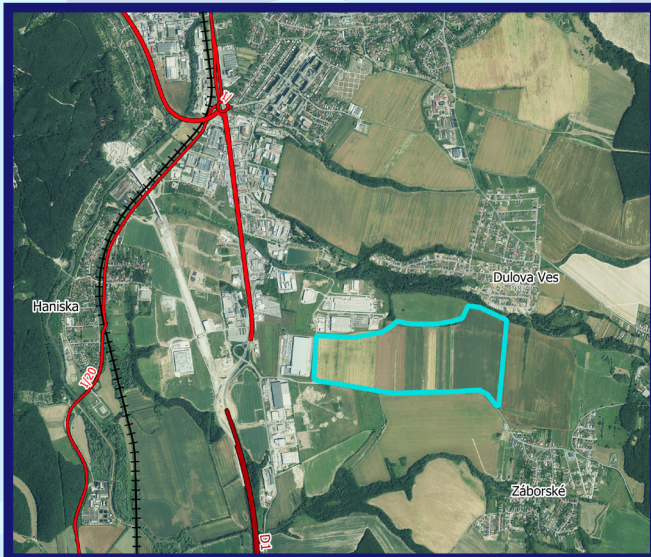
Connection to electrical network  
**planned**



Connection to water supply network  
**yes, DN 110**



Connection to sewer system  
**yes, DN 300 a DN 600**



Type of ownership  
**mixed**

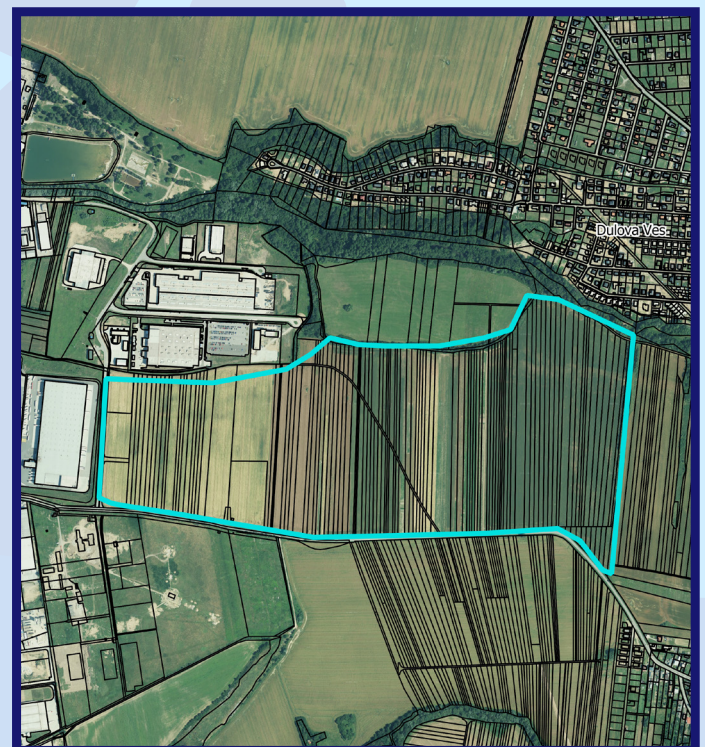
Parcels owned by natural persons and private companies.



Area  
**12.77 ha**

Area available  
**10.12 ha**

Expansion capacity  
**no**



# SABINOV



District area  
**545.45 km<sup>2</sup>**

Population of the district  
**60,607**



EAP in the district  
**26,674**

Unemployment rate  
**15.86%**

Average gross monthly salary  
**€1,063**



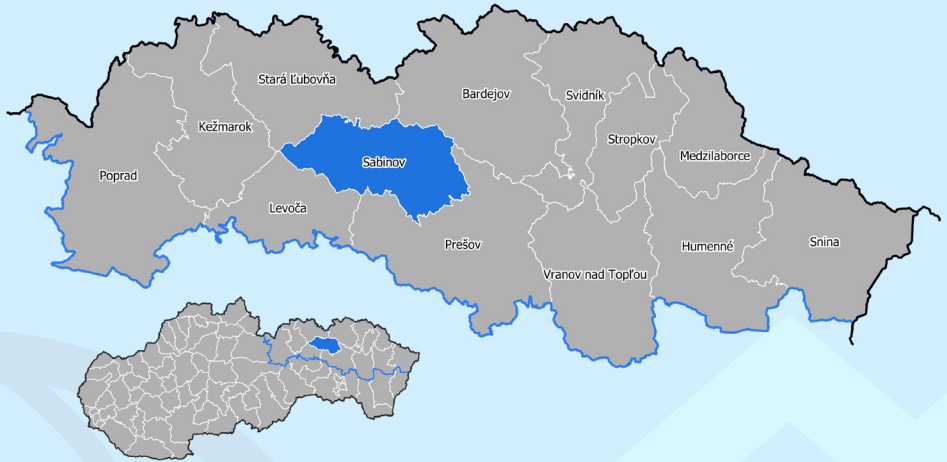
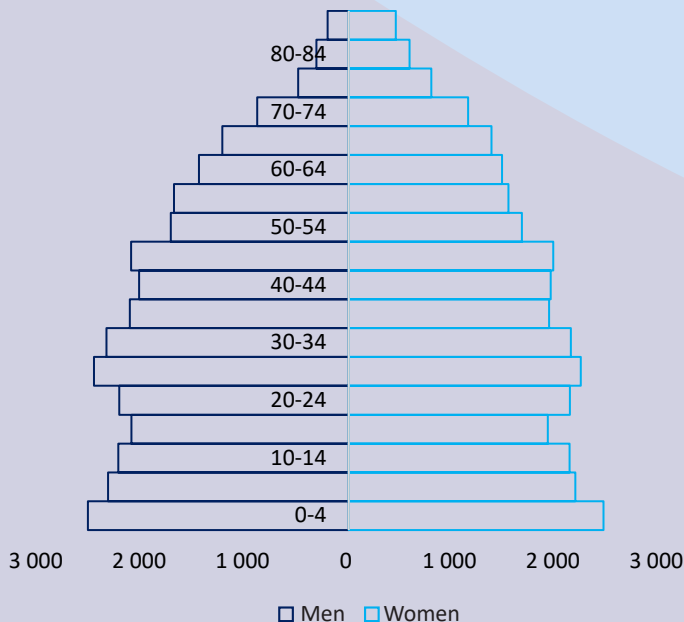
Schools of secondary education  
**6**

Students in secondary education  
**1,326**

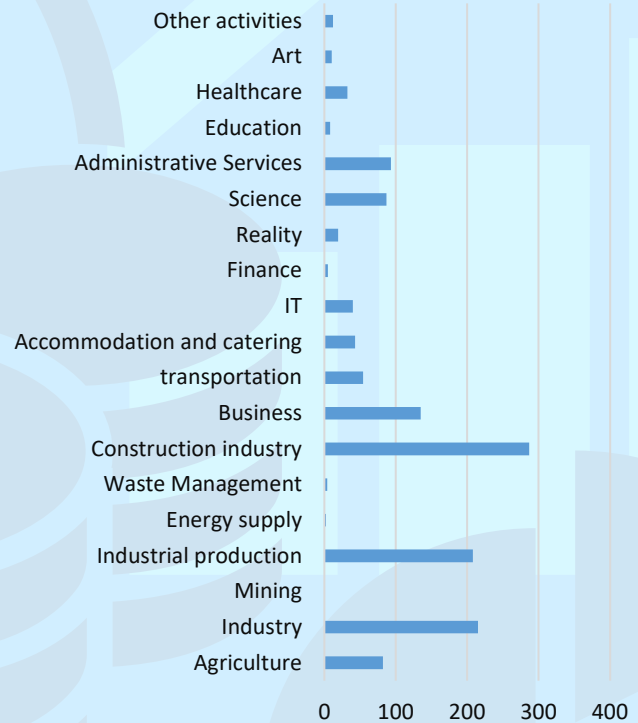
Students in dual education  
**12**



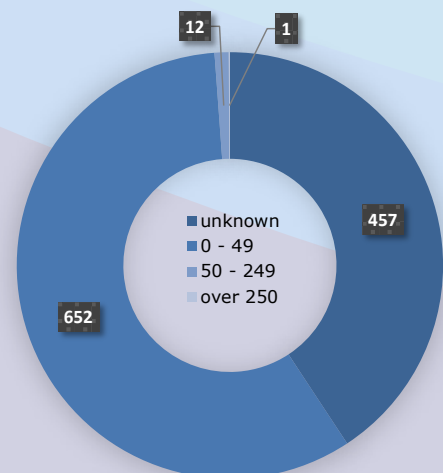
## AGE PYRAMID



## STRUCTURE OF ENTERPRISES BY ECONOMIC ACTIVITIES



## STRUCTURE OF ENTERPRISES BY NUMBER OF EMPLOYEES



District  
**SABINOV**

49°08'56.5"N 20°57'39.4"E



**TIME ACCESSIBILITY TO THE PARK**

Park type **GREEN**



Road access  
**<1km to 1st class road I/68**

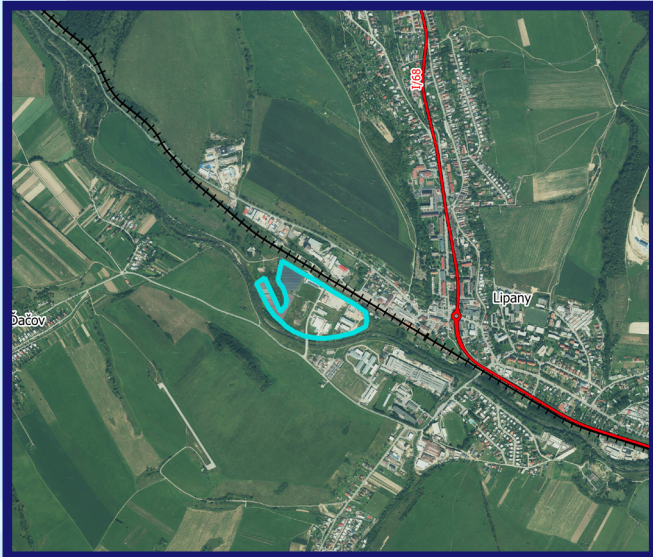
Highway access  
**30 km**



Railroad access  
**2 km**



Population living within 45-minute commuting distance  
**241,828**



Type of ownership  
**municipal**

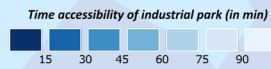
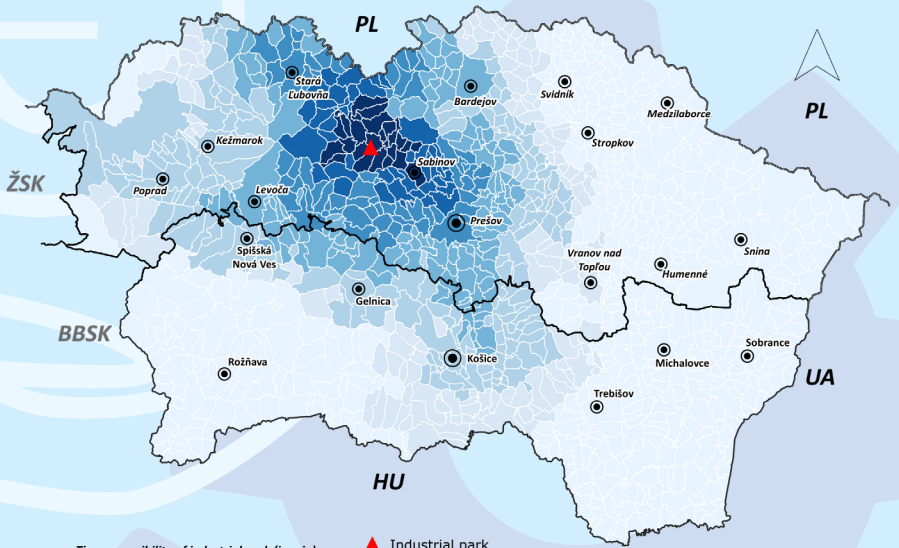
Land and properties owned by the city.



Area  
**10.13 ha**

Area available  
**0 ha**

Expansion capacity  
**no**



- ▲ Industrial park
  - District city
  - Regional city
  - Region border
  - Country border
- 0 10 20 30 km



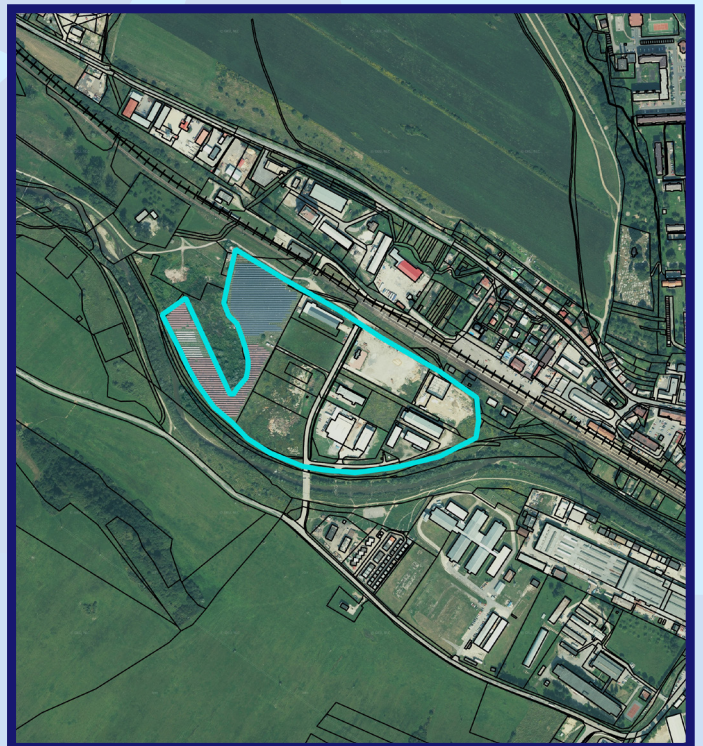
Connection to electrical network  
**0.6 MW**



Connection to water supply network  
**yes, DN 300**



Connection to sewer system  
**yes, DN 300**



District

**SABINOV**

49°06'37.1"N 21°05'01.3"E



**TIME ACCESSIBILITY TO THE PARK**

Park type **BROWN**



Road access

**directly to 1st class road I/68**

Highway access

**18 km**



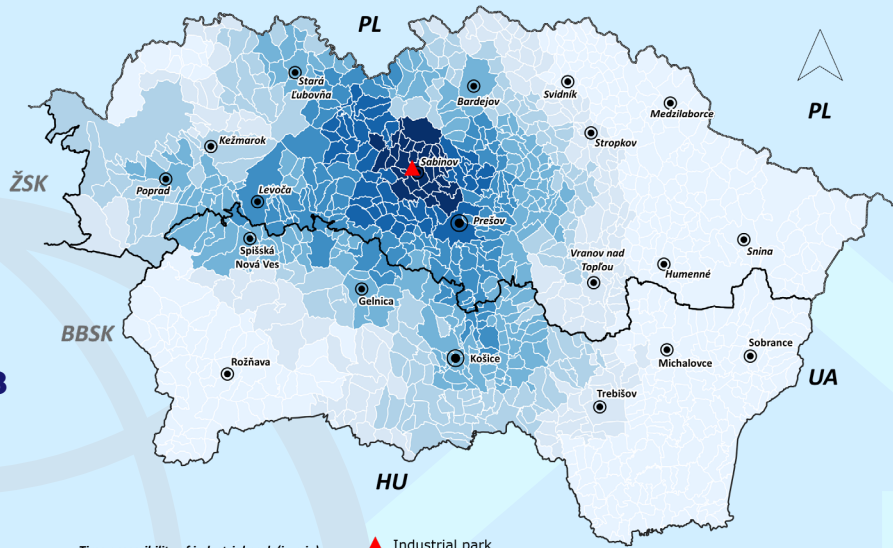
Railroad access

**2 km**



Population living within 45- minute commuting distance

**329,033**



Time accessibility of industrial park (in min)  
 15 30 45 60 75 90  
 ▲ Industrial park  
 ● District city  
 ● Regional city  
 — Region border  
 — Country border  
 0 10 20 30 km



Connection to electrical network

**2 MW**



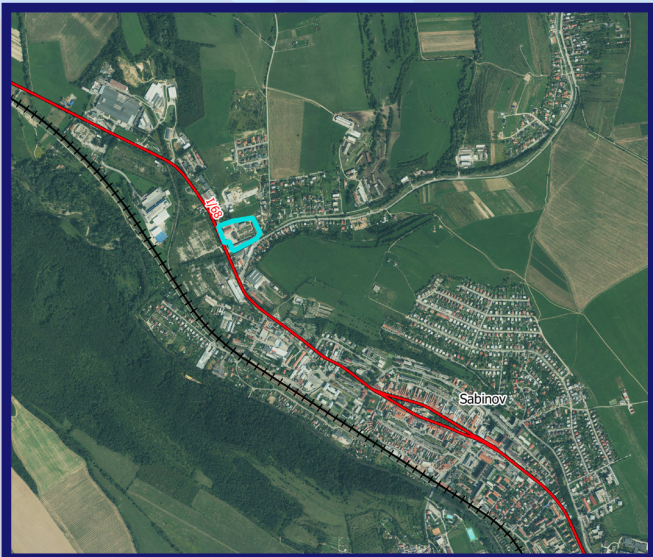
Connection to water supply network

**yes, DN 160**



Connection to sewer system

**yes, DN 160**



Type of ownership

**private**

Allotments and properties held by individuals and private companies.



Area

**2 ha**

Area available

**0.16 ha**

Expansion capacity

**yes**

District

**SABINOV**

49°05'59.7"N 21°07'26.7"E



**TIME ACCESSIBILITY TO THE PARK**

Park type **POTENTIAL**



Road access  
**directly to 1st class road I/18**

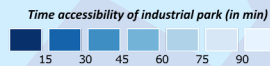
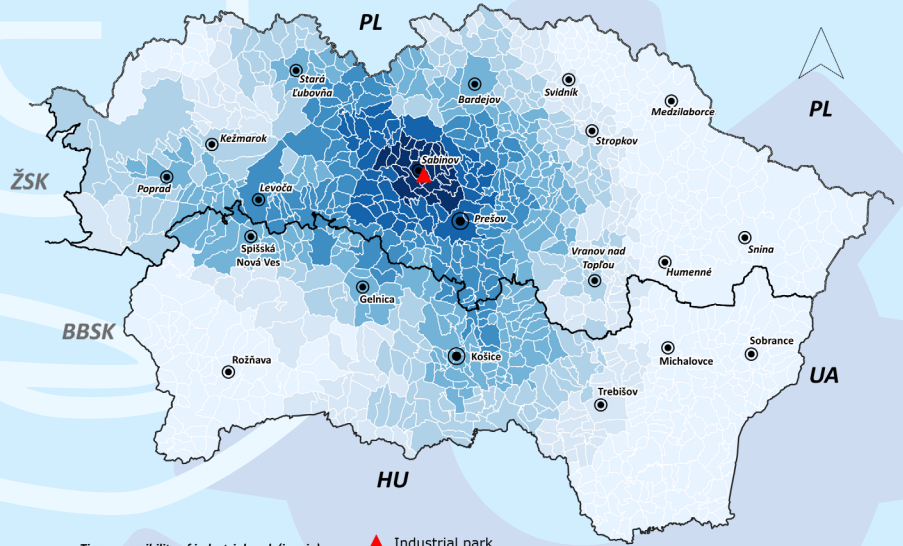
Highway access  
**18 km**



Railroad access  
**3 km**



Population living within 45-minute  
commuting distance  
**329,033**



- ▲ Industrial park
- District city
- Regional city

— Region border  
— Country border

0 10 20 30 km



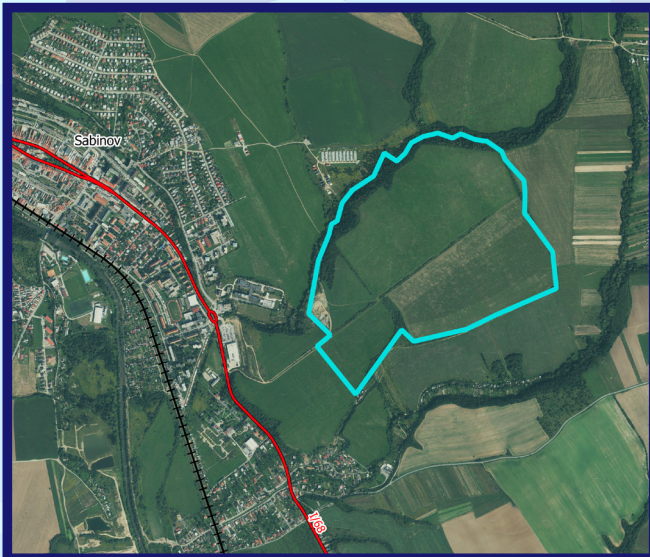
Connection to electrical  
network  
**planned**



Connection to  
water supply network  
**planned**



Connection to sewer system  
**planned**



Type of ownership  
**public**

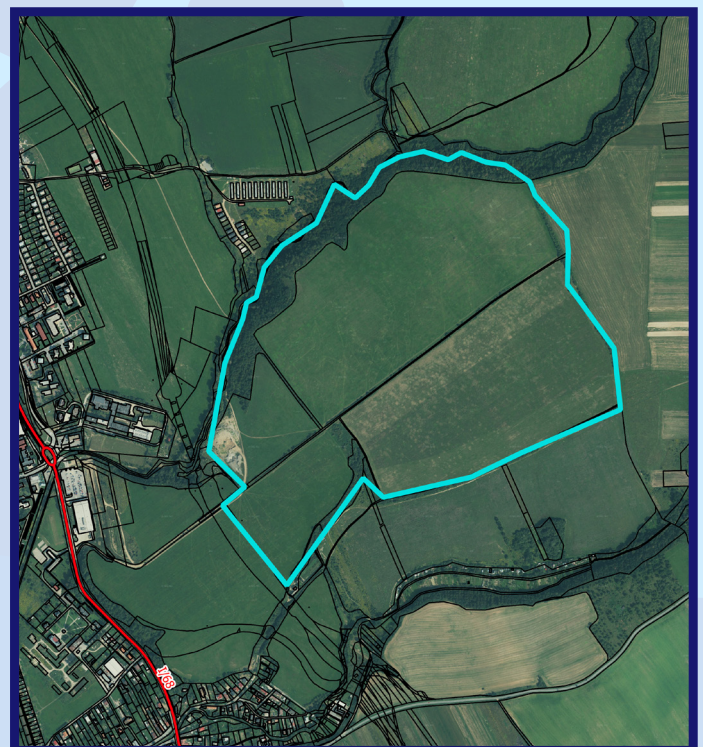
Parcels owned by  
Prešov Self-Governing  
Region.



Area  
**79 ha**

Area available  
**79 ha**

Expansion capacity  
**nie**



# SNINA



District area  
**807.74 km<sup>2</sup>**

Population of the district  
**34,655**



EAP in the district  
**18,329**

Unemployment rate  
**10.23%**

Average gross monthly salary  
**€932**



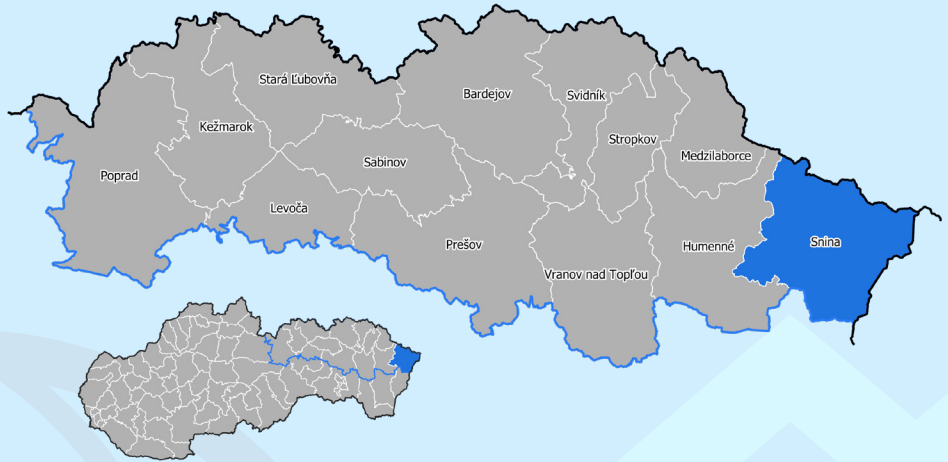
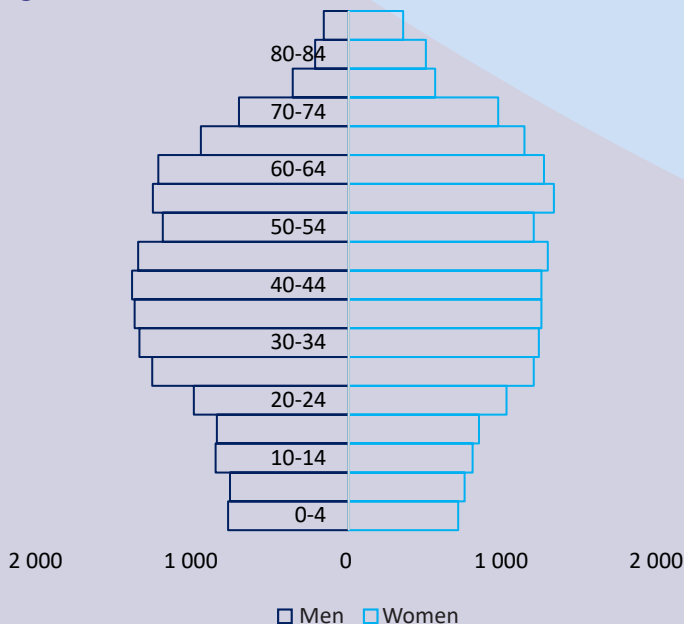
Schools of secondary education  
**5**

Students in secondary education  
**1,022**

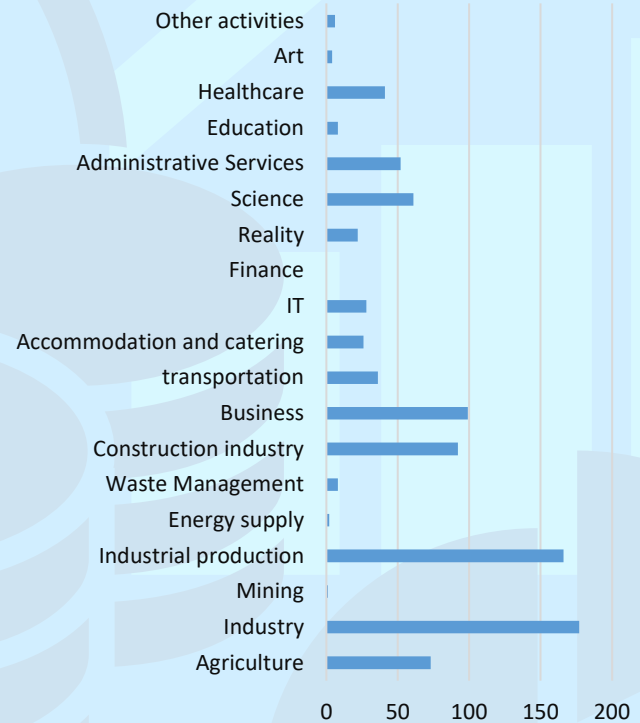
Students in dual education  
**4**



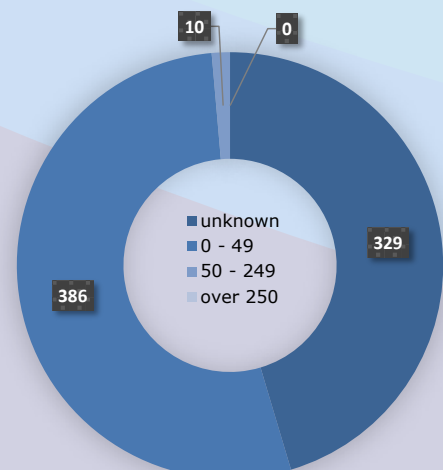
## AGE PYRAMID



## STRUCTURE OF ENTERPRISES BY ECONOMIC ACTIVITIES



## STRUCTURE OF ENTERPRISES BY NUMBER OF EMPLOYEES



District

**SNINA**

48°59'18.7"N 22°10'21.9"E



**TIME ACCESSIBILITY TO THE PARK**

Park type **BROWN**



Road access  
**to 1st class road I/74 through local road**

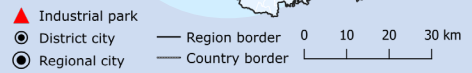
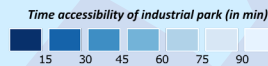
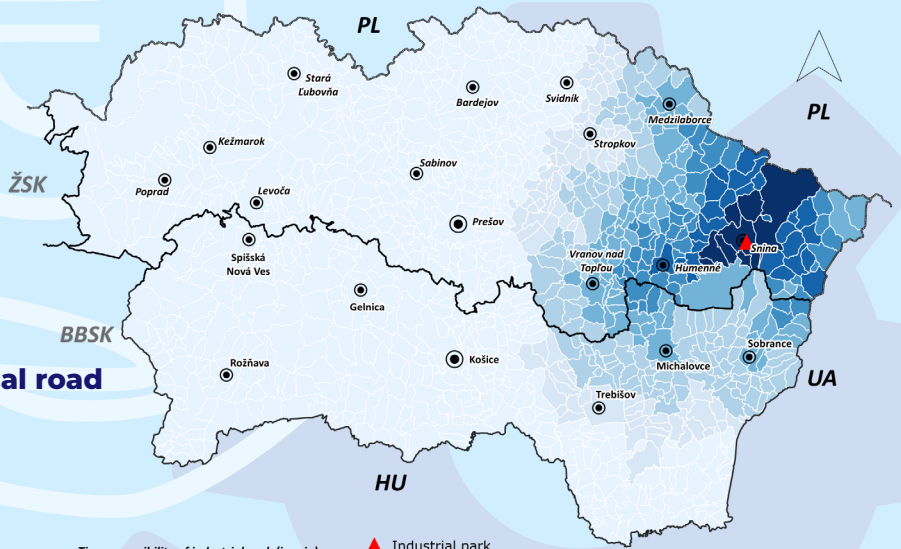
Highway access  
**80 km**



Railroad access  
**<500 m**



Population living within 45-minute  
commuting distance  
**96,218**



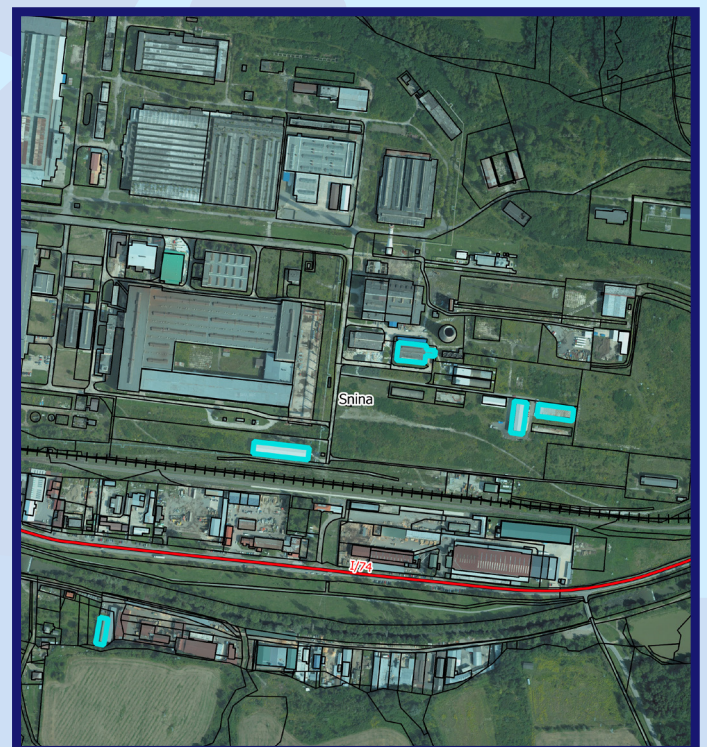
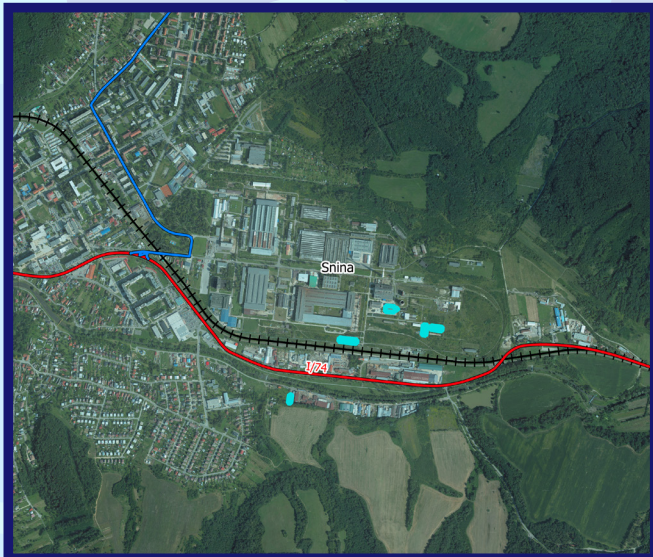
Connection to electrical  
network  
**25 MW**



Connection to  
water supply network  
**yes, DN 300**



Connection to sewer system  
**yes, DN 300**



Type of ownership  
**private**

Land and properties  
owned by private  
companies.



Area  
**0.73 ha**

Area available  
**0.5 ha**

Expansion capacity  
**no**

# STARÁ ĽUBOVŇA



District area  
**707.87 km<sup>2</sup>**

Population of the district  
**52,867**



EAP in the district  
**25,036**

Unemployment rate  
**8.6%**

Average gross monthly salary  
**€1,053**



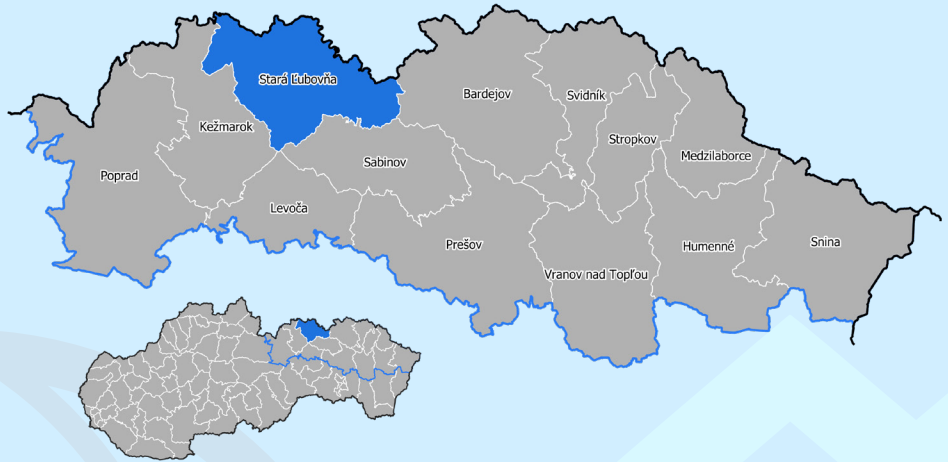
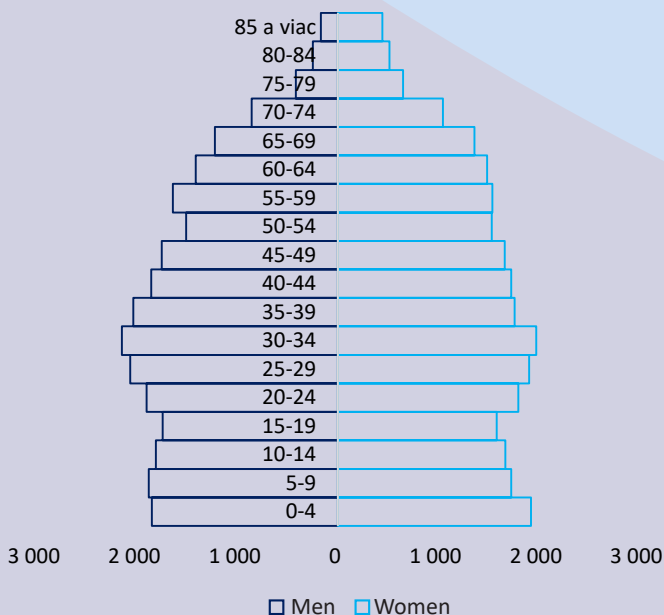
Schools of secondary education  
**7**

Students in secondary education  
**1,549**

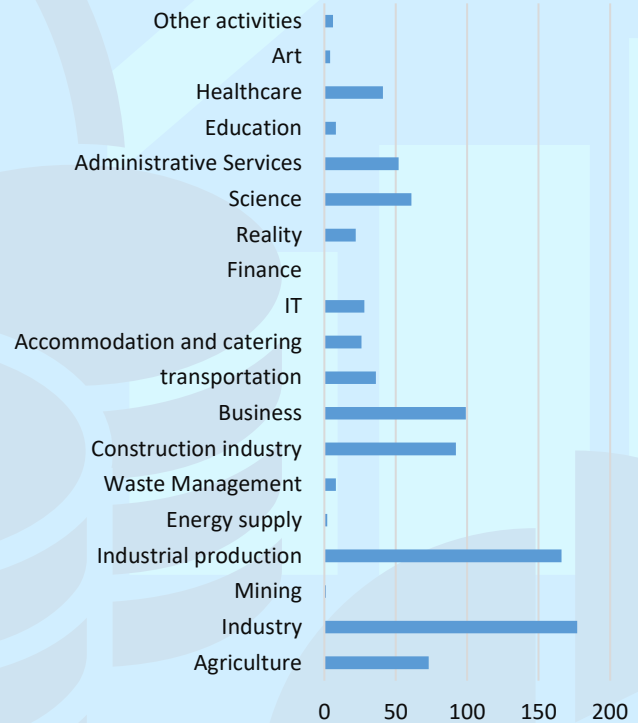
Students in dual education  
**88**



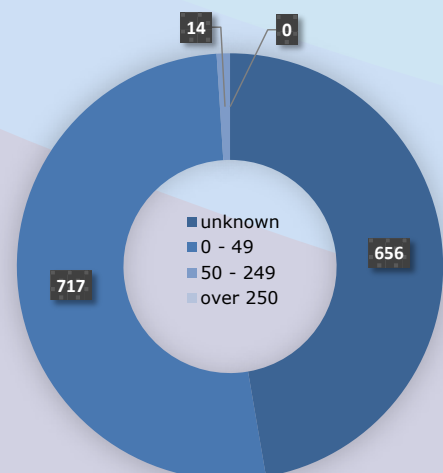
## AGE PYRAMID



## STRUCTURE OF ENTERPRISES BY ECONOMIC ACTIVITIES



## STRUCTURE OF ENTERPRISES BY NUMBER OF EMPLOYEES



# STARÁ ĽUBOVŇA

7

District

**STARÁ ĽUBOVŇA**

49°17'12.4"N 20°41'18.5"E



**TIME ACCESSIBILITY TO THE PARK**

Park type **POTENTIAL**



Road access

**<1 km to 1st class road I/68**

Highway access

**45 km**



Railroad access

**<1 km**



Population living within 45-minute commuting distance

**129,700**



Type of ownership  
**mixed**

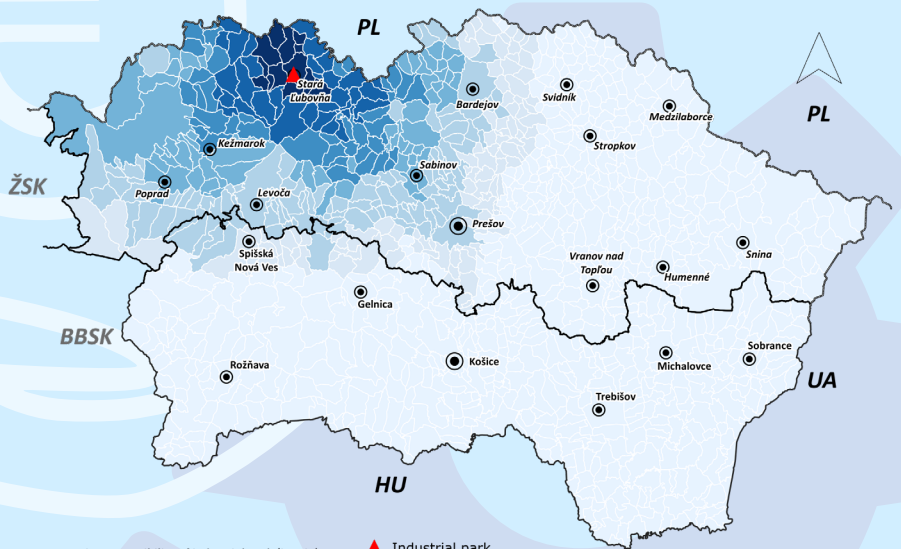
Land and properties owned by natural persons and private companies.



Area  
**2.5 ha**

Area available  
**2.5 ha**

Expansion capacity  
**no**



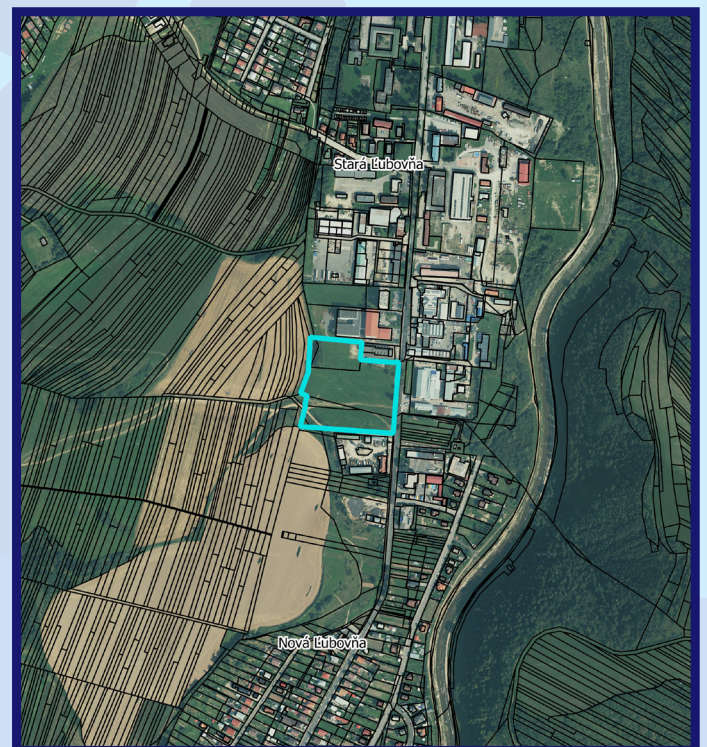
Connection to electrical network  
**planned**



Connection to water supply network  
**planned**



Connection to sewer system  
**planned**



District

**STARÁ ĽUBOVŇA**

49°15'08.7"N 20°31'44.0"E



**TIME ACCESSIBILITY TO THE PARK**

Park type **POTENTIAL**



Road access

**350 m to 1st class road I/77**

Highway access

**30 km**



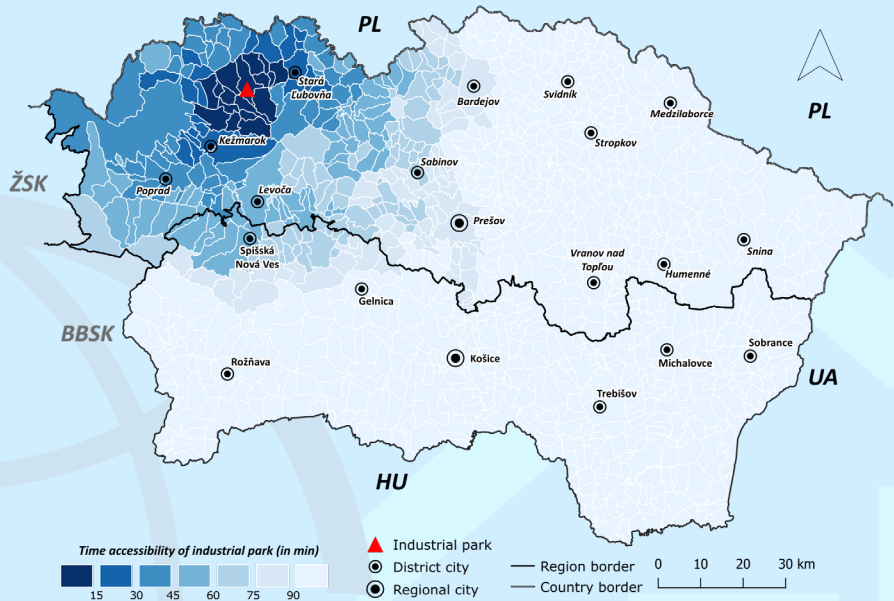
Railroad access

**<100 m**



Population living within 45-minute commuting distance

**200,281**



Connection to electrical network

**planned**



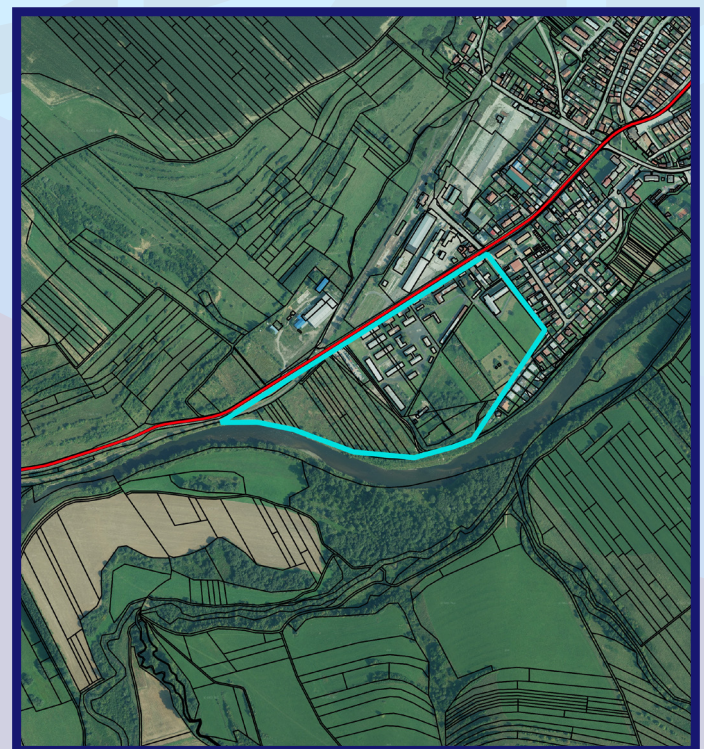
Connection to water supply network

**planned**



Connection to sewer system

**planned**



Type of ownership

**mixed**

Land and properties owned by natural persons and private companies.



Area

**15 ha**

Area available

**15 ha**

Expansion capacity

**no**

# STROPKOV



District area  
**388.92 km<sup>2</sup>**

Population of the district  
**19,744**



EAP in the district  
**10,707**

Unemployment rate  
**12.37%**

Average gross monthly salary  
**991 €**



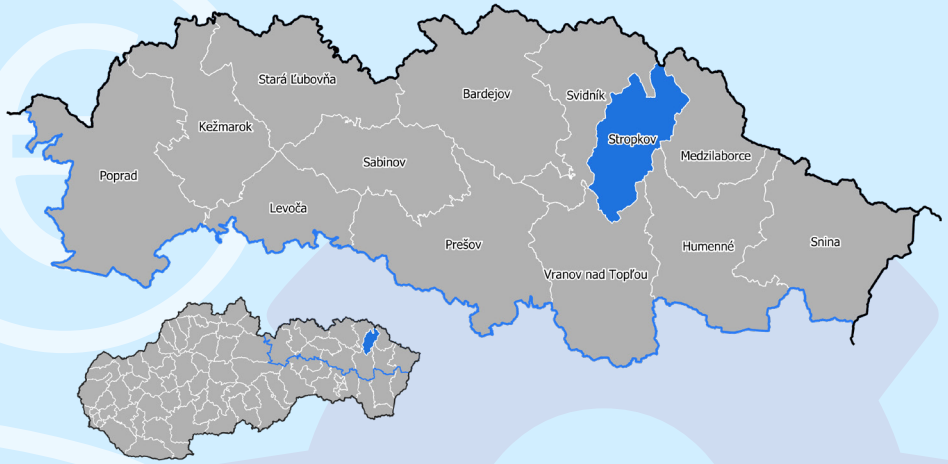
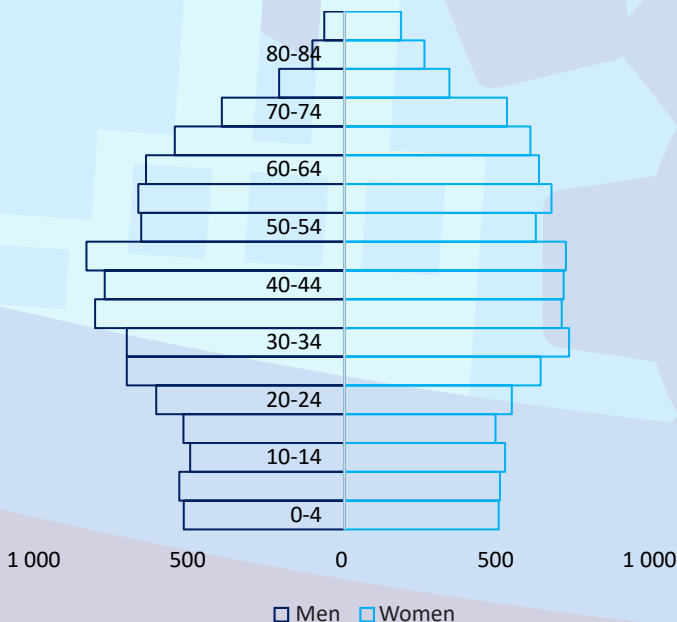
Schools of secondary education  
**3**

Students in secondary education  
**556**

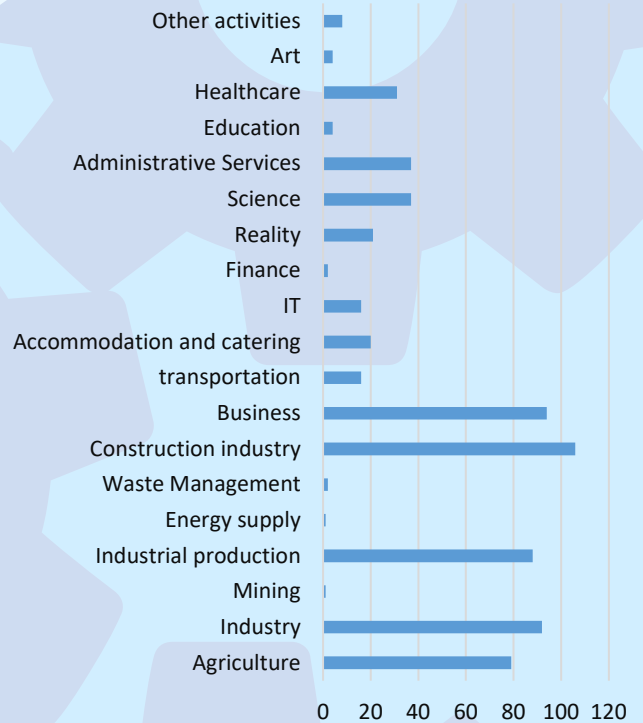
Students in dual education  
**0**



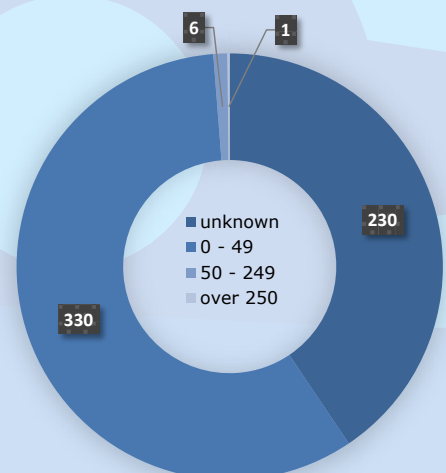
## AGE PYRAMID



## STRUCTURE OF ENTERPRISES BY ECONOMIC ACTIVITIES



## STRUCTURE OF ENTERPRISES BY NUMBER OF EMPLOYEES



District

**STROPKOV** 49°11'38.3"N 21°39'07.7"E



**TIME ACCESSIBILITY TO THE PARK**

Park type **BROWN**



Road access  
**directly to 1st class road I/15**

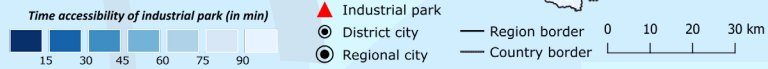
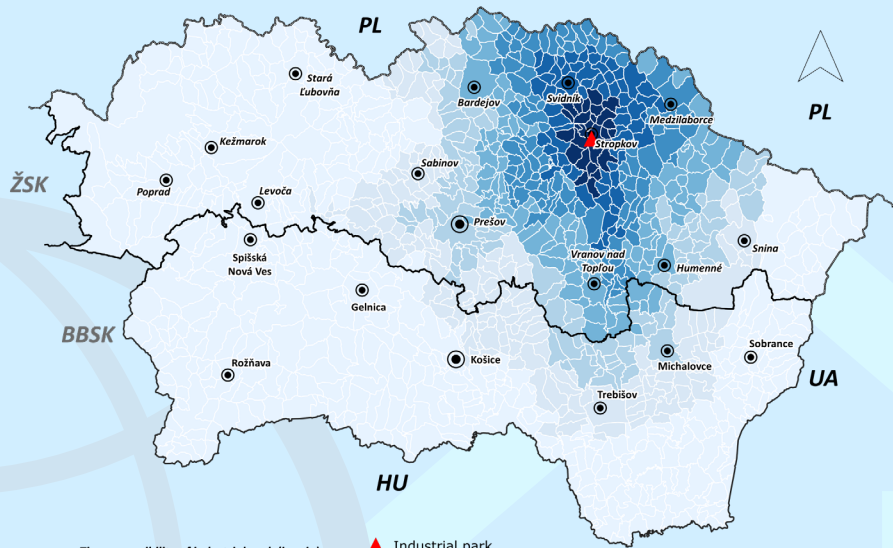
Highway access  
**50 km**



Railroad access  
**50 km**



Population living within 45-minute commuting distance  
**93,854**



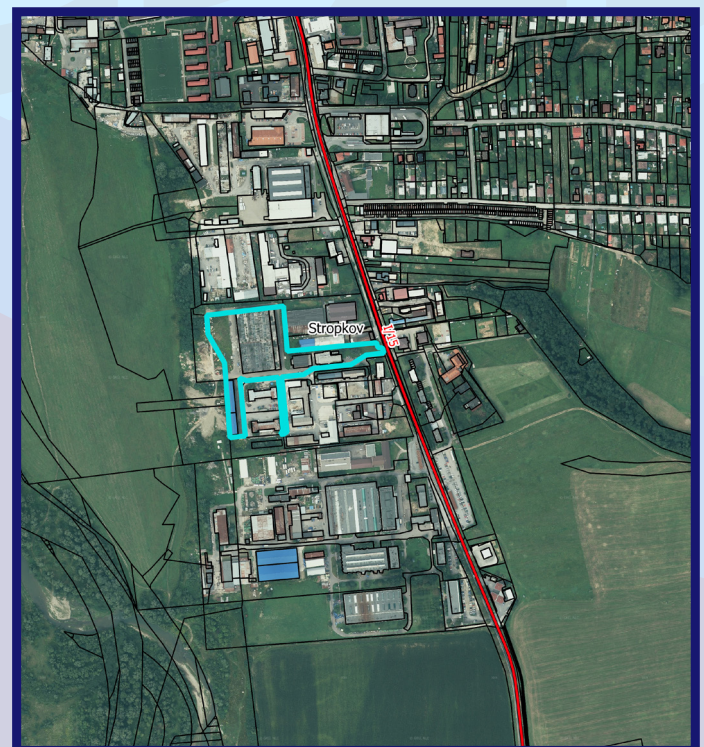
Connection to electrical network  
**1.2 MW**



Connection to water supply network  
**yes, DN 200**



Connection to sewer system  
**yes, DN 200**



Type of ownership  
**municipal**

Land and properties owned by the city.



Area  
**2.11 ha**

Area available  
**0.7 ha**

Expansion capacity  
**yes**

# SVIDNÍK



District area  
**549.61 km<sup>2</sup>**

Population of the district  
**31,397**



EAP in the district  
**17,193**

Unemployment rate  
**13.55%**

Average gross monthly salary  
**€995**



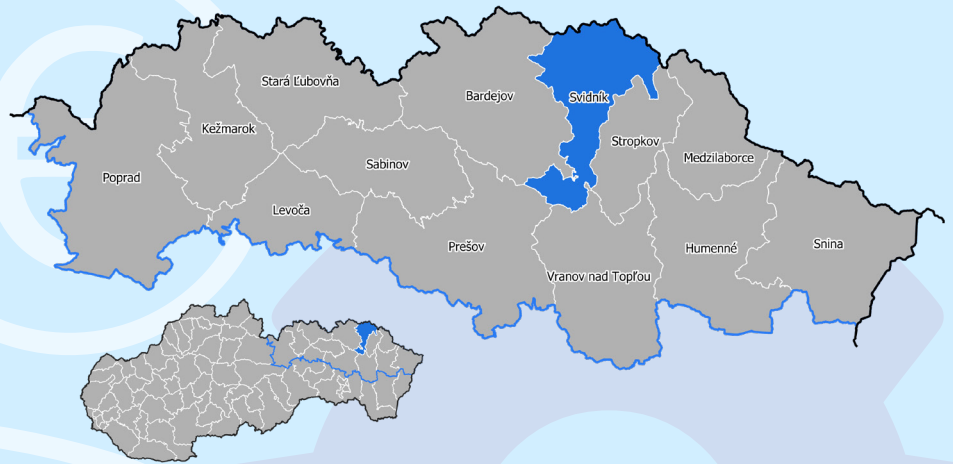
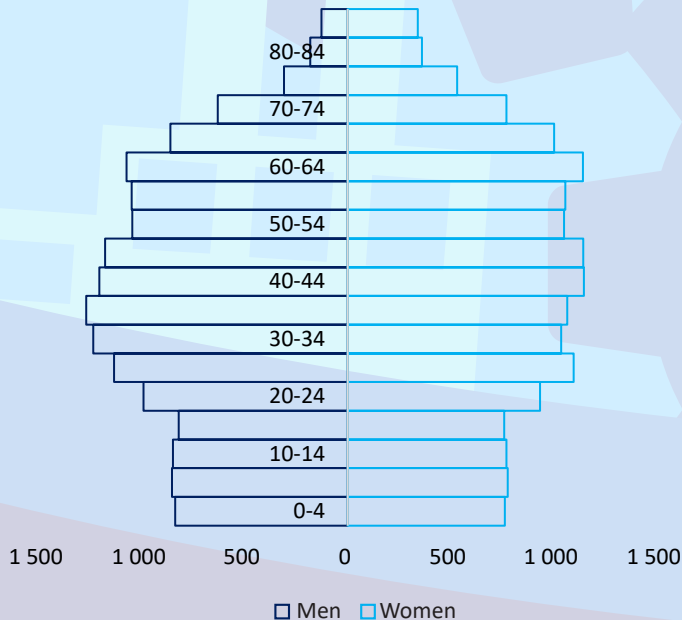
Schools of secondary education  
**8**

Students in secondary education  
**1,297**

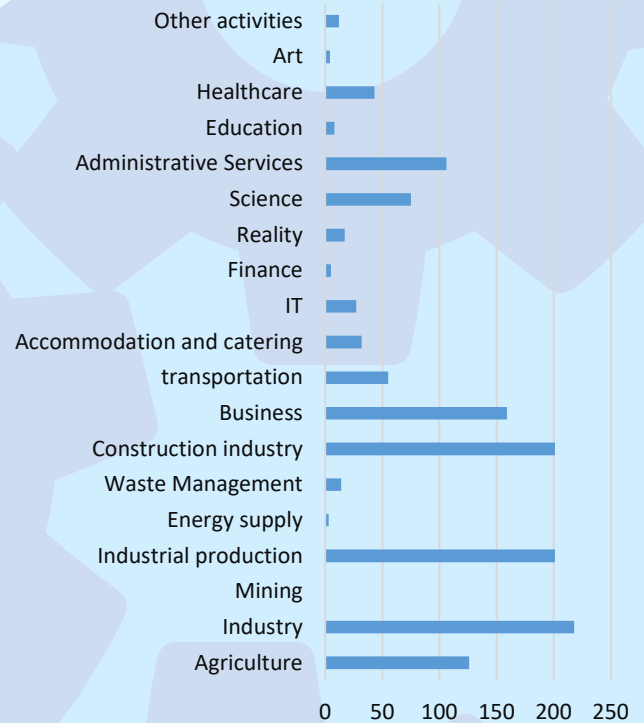
Students in dual education  
**46**



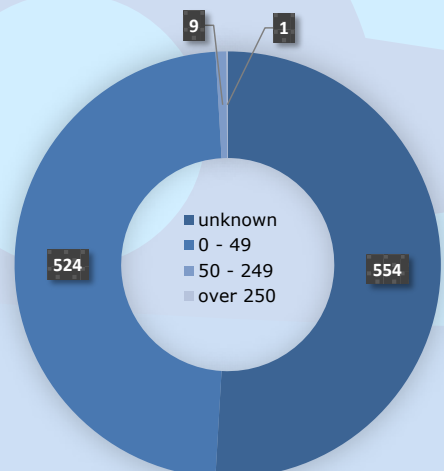
## AGE PYRAMID



## STRUCTURE OF ENTERPRISES BY ECONOMIC ACTIVITIES



## STRUCTURE OF ENTERPRISES BY NUMBER OF EMPLOYEES



# 19 SVIDNÍK – JUH (PETROVA DOLINA)

District

**SVIDNÍK**

48°52'40.0"N 21°41'27.0"E



**TIME ACCESSIBILITY TO THE PARK**

Park type **POTENTIAL**



Road access

**directly to 1st class road I/73**

Highway access

**55 km**



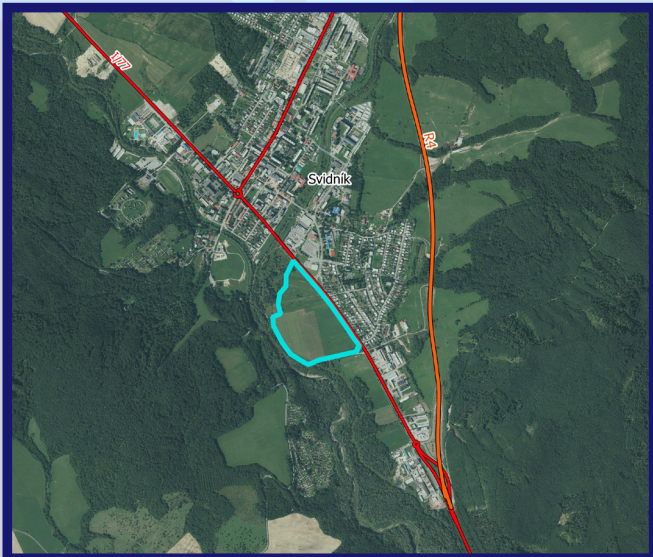
Railroad access

**40 km**



Population living within 45-minute commuting distance

**101,731**



Type of ownership

**private**

Land and properties owned by natural persons and private companies.



Area

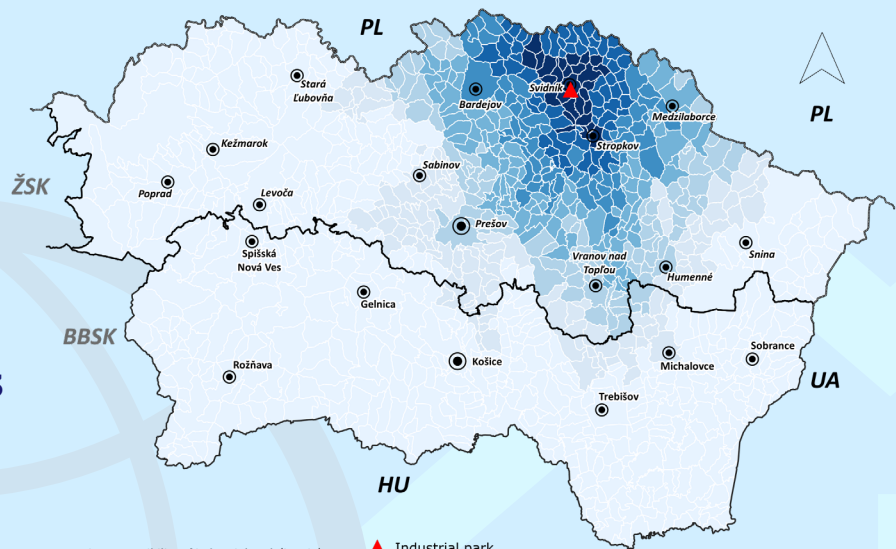
**19.4 ha**

Area available

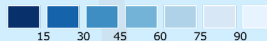
**19.4 ha**

Expansion capacity

**no**



Time accessibility of industrial park (in min)



▲ Industrial park

● District city

● Regional city

— Region border  
— Country border



Connection to electrical network

**0.45 MW**



Connection to water supply network

**yes, DN 200**



Connection to sewer system

**yes, DN 300**



# VRANOV NAD TOPLĽOU



District area  
**769.23 km<sup>2</sup>**

Population of the district  
**79,181**



EAP in the district  
**38,360**

Unemployment rate  
**15.74%**

Average gross monthly salary  
**€1,039**



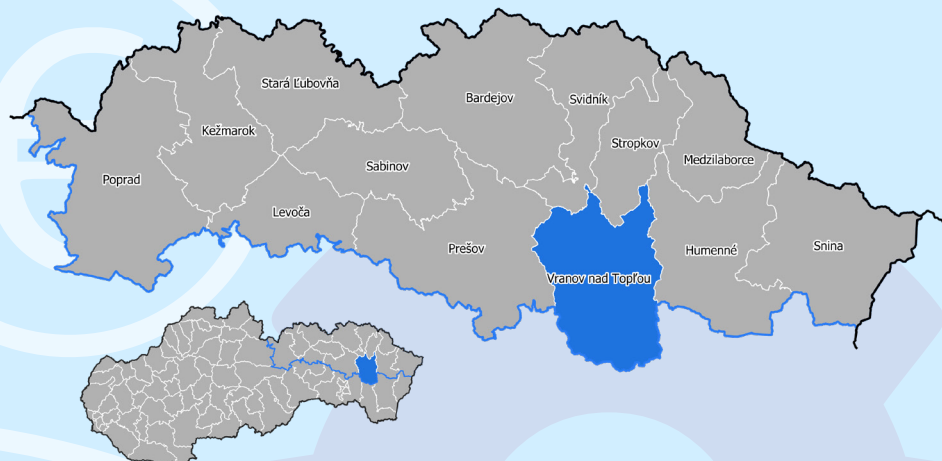
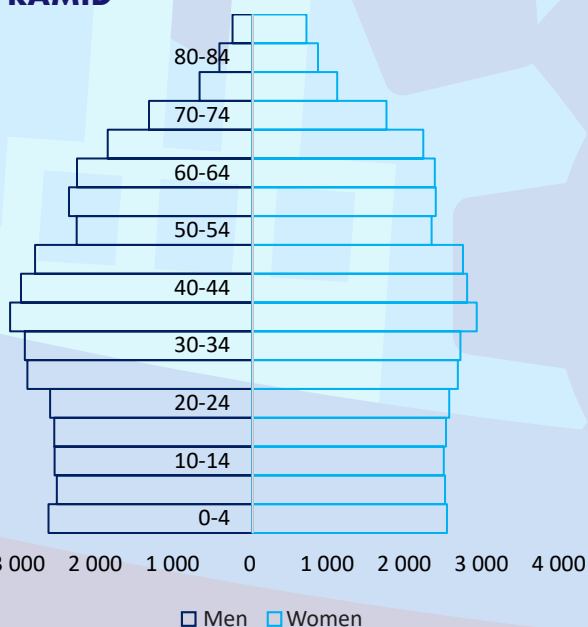
Schools of secondary education  
**8**

Students in secondary education  
**1,544**

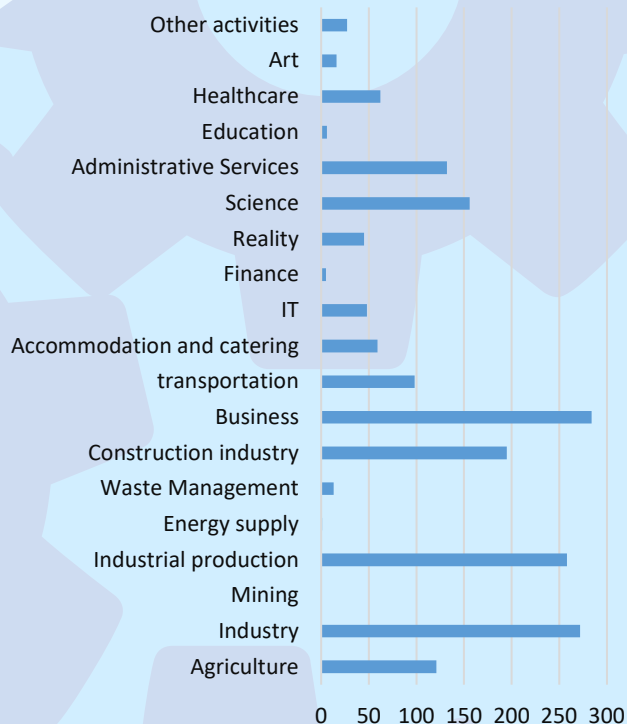
Students in dual education  
**20**



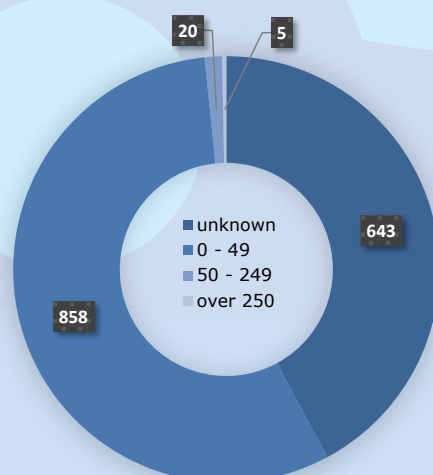
## AGE PYRAMID



## STRUCTURE OF ENTERPRISES BY ECONOMIC ACTIVITIES



## STRUCTURE OF ENTERPRISES BY NUMBER OF EMPLOYEES



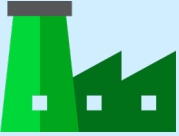
District

**VRANOV N. TOPLŤOU** 48°48'21.6"N 21°46'05.3"E



**TIME ACCESSIBILITY TO THE PARK**

Park type **GREEN**



Road access

**300 m to 2nd class road no. 554**

Highway access

**70 km**



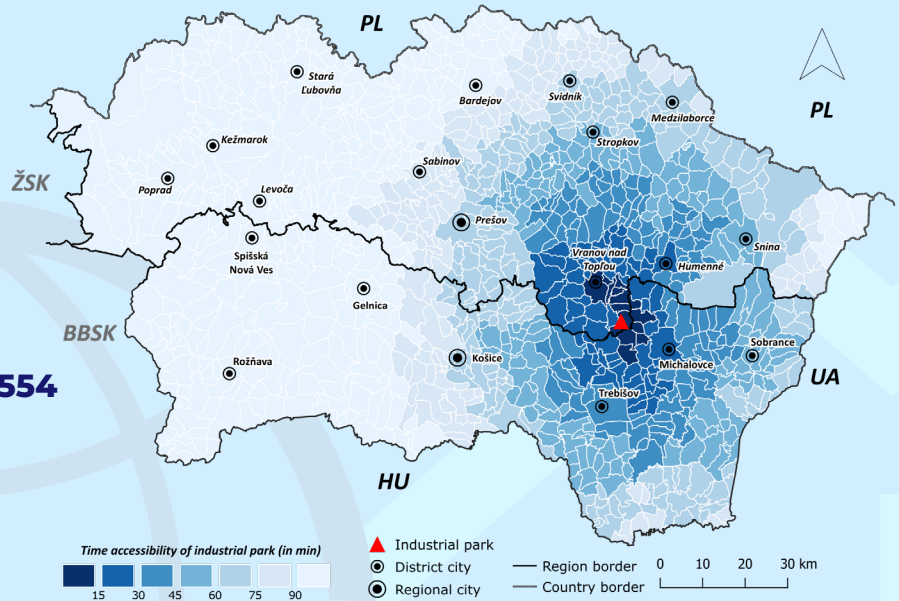
Railroad access

**5 km**



Population living within 45-minute commuting distance

**269,371**



Connection to electrical network

**0.15 MW**



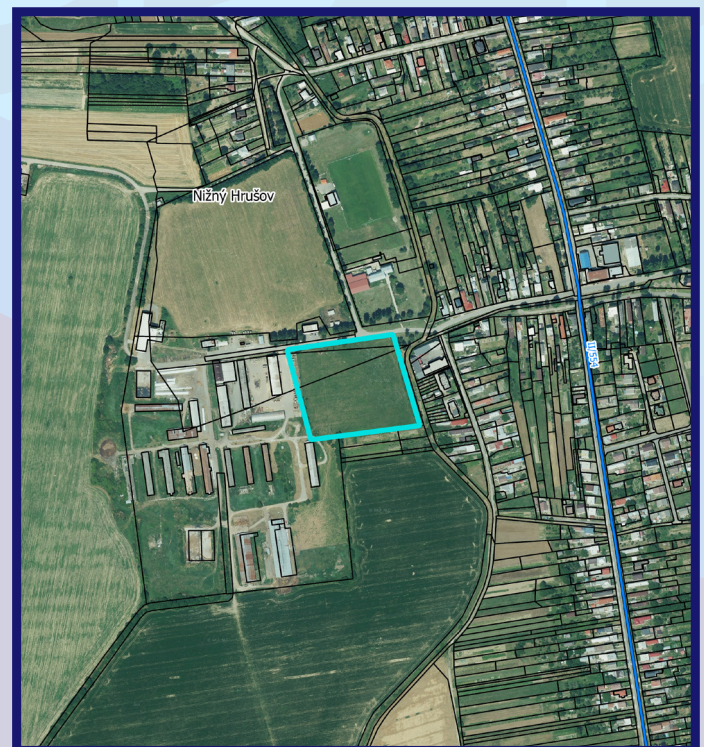
Connection to water supply network

**yes, DN 40**



Connection to sewer system

**yes, DN 100**



Type of ownership  
**municipal**

Parcels owned by the municipality.



Area  
**2.4 ha**

Area available  
**2.4 ha**

Expansion capacity  
**yes**

District

**VRANOV N. TOPLŤOU** 48°52'40.0"N 21°41'27.0"E



**TIME ACCESSIBILITY TO THE PARK**

Park type **GREEN**



Road access  
**directly to 1st class road I/18**

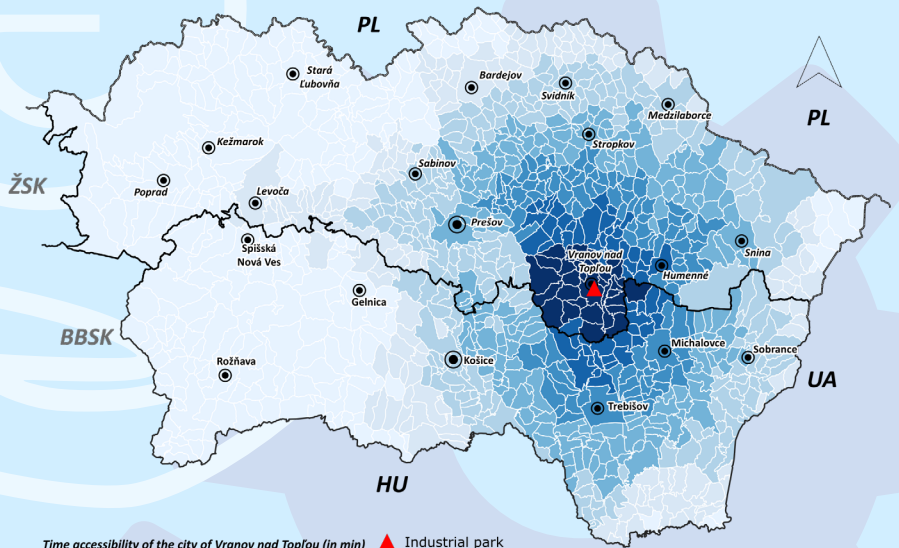
Highway access  
**46 km**



Railroad access  
**3 km**



Population living within 45-minute commuting distance  
**270,901**



Time accessibility of the city of Vranov nad Topľou (in min)



▲ Industrial park

● District city

● Regional city

— Region border

— Country border

0 10 20 30 km



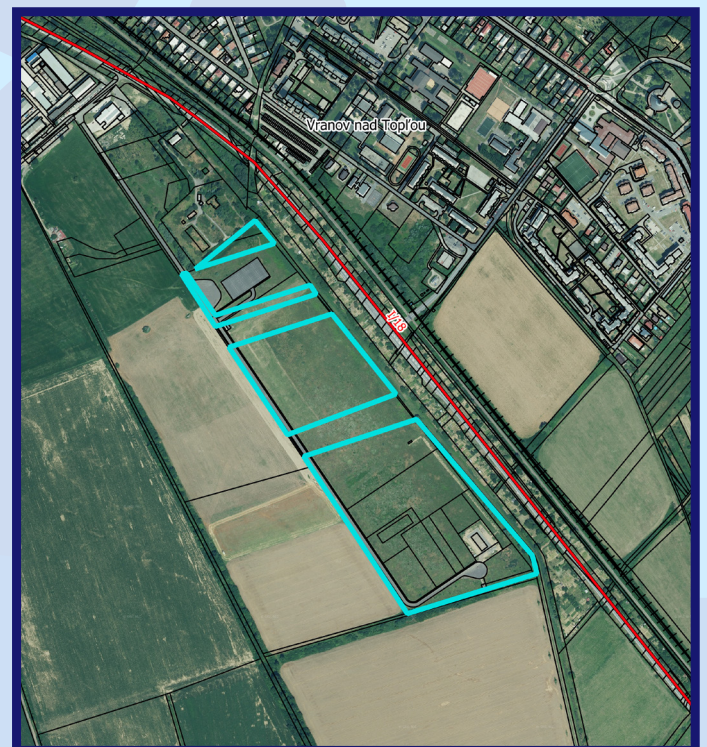
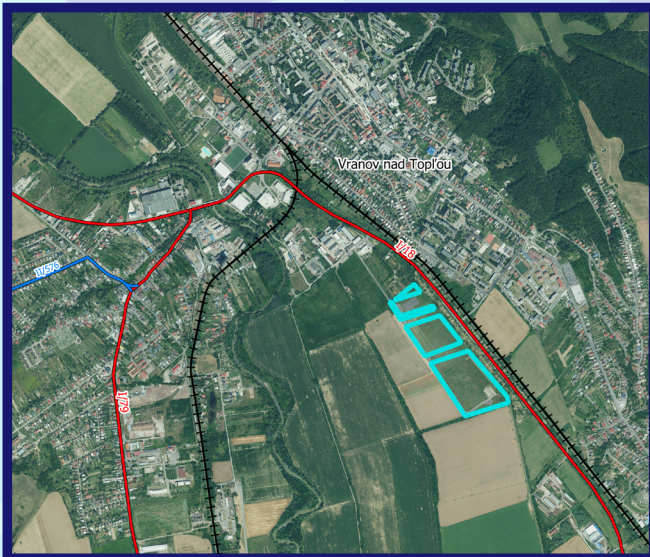
Connection to electrical network  
**6.6 MW**



Connection to water supply network  
**yes, DN 160**



Connection to sewer system  
**yes, DN 160**



Type of ownership  
**mixed**

3 parcels in private ownership, the rest owned by the city.



Area  
**12.77 ha**

Area available  
**10.12 ha**

Expansion capacity  
**no**

District

**VRANOV N. TOPL'OU** 48°55'54.7"N 21°35'42.8"E



**TIME ACCESSIBILITY TO THE PARK**

Park type **POTENTIAL**



Road access **directly to 1st class road I/18**

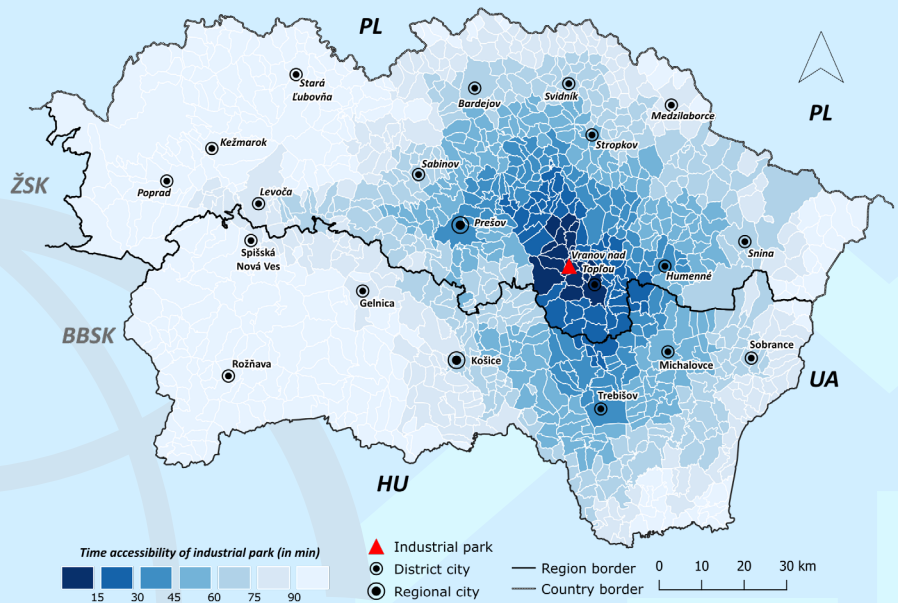
Highway access **40 km**



Railroad access **<1 km**



Population living within 45-minute commuting distance **297,557**



Connection to electrical network **planned**



Connection to water supply network **planned**



Connection to sewer system **planned**



Type of ownership **mixed**

Parcels owned by natural persons and private companies.



Area **10.1 ha**

Area available **10.1 ha**

Expansion capacity **no**

District

**VRANOV N. TOPL'OU** 48°54'26.3"N 21°36'53.3"E



**TIME ACCESSIBILITY TO THE PARK**

Park type **POTENTIAL**



Road access  
**directly to 1st class road I/18**

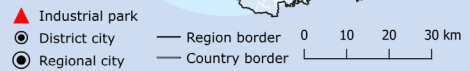
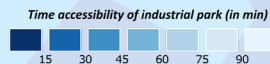
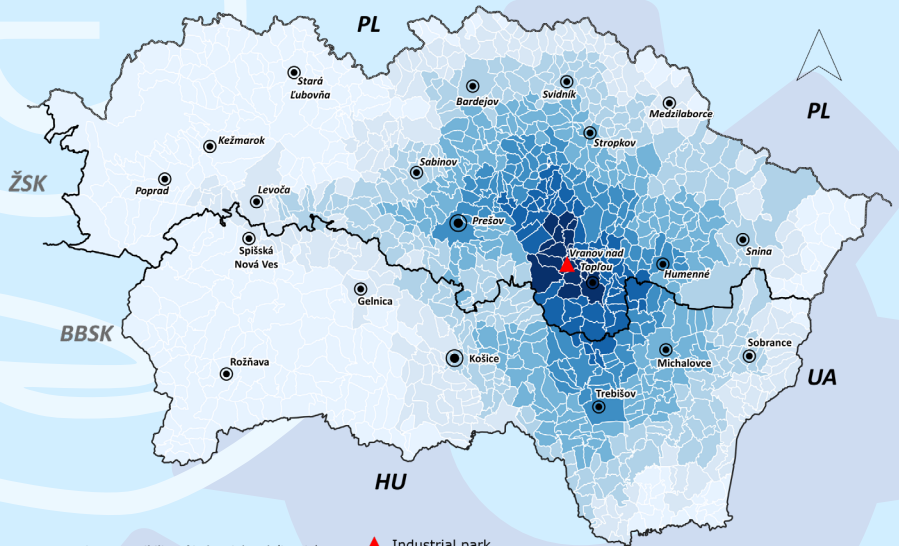
Highway access  
**45 km**



Railroad access  
**1.5 km**



Population living within 45-minute  
commuting distance  
**297,557**



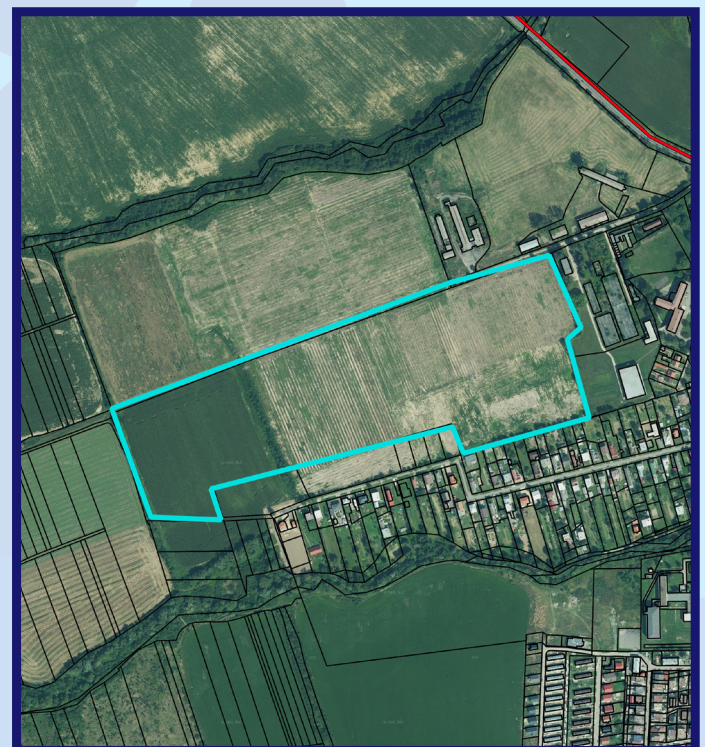
Connection to electrical  
network  
**planned**



Connection to  
water supply network  
**planned**



Connection to sewer system  
**planned**



Type of ownership  
**mixed**

Parcels owned by natural  
persons and private  
companies.



Area  
**13.8 ha**

Area available  
**13.8 ha**

Expansion capacity  
**no**

# PREŠOV REGION

SELF-GOVERNING

*of opportunities*

For more information see:



*Downloadable contents*



*Webmap of industrial parks*

## CONTACTS



Prešov Self-Governing Region  
Námestie mieru 2  
080 01 Prešov



051 / 70 81 111



odbor\_SR@psk.sk



PresovskyKraj